

## *Customizing Gnome Desktop*



*Right click on Desktop screen and select “Change Desktop Background”*



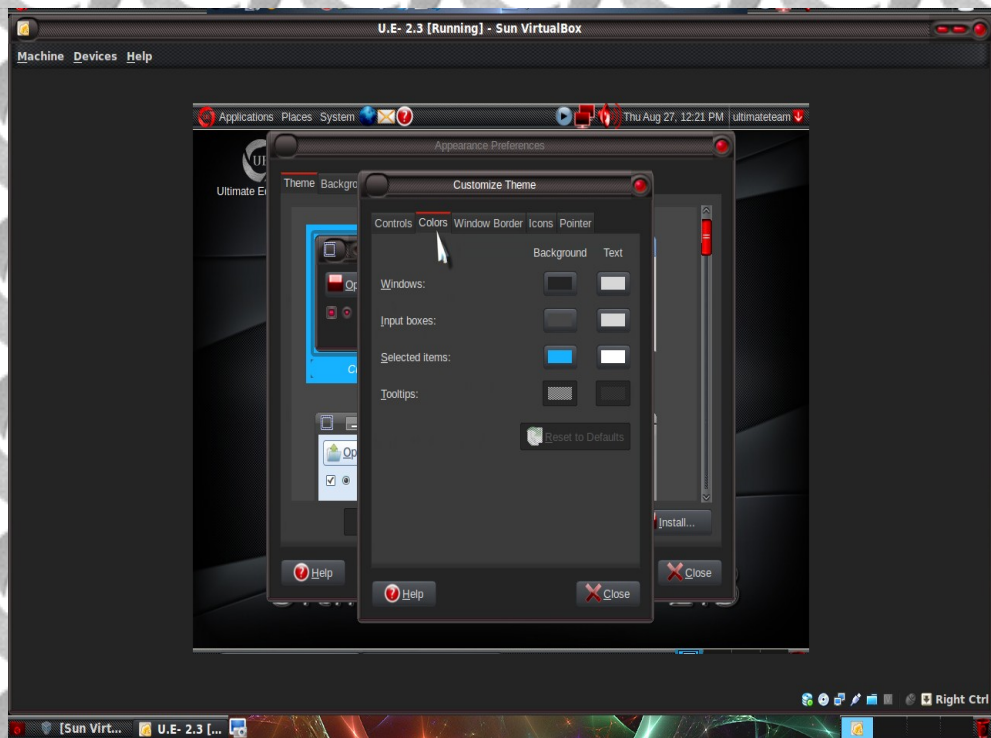
*Select your desired Theme*



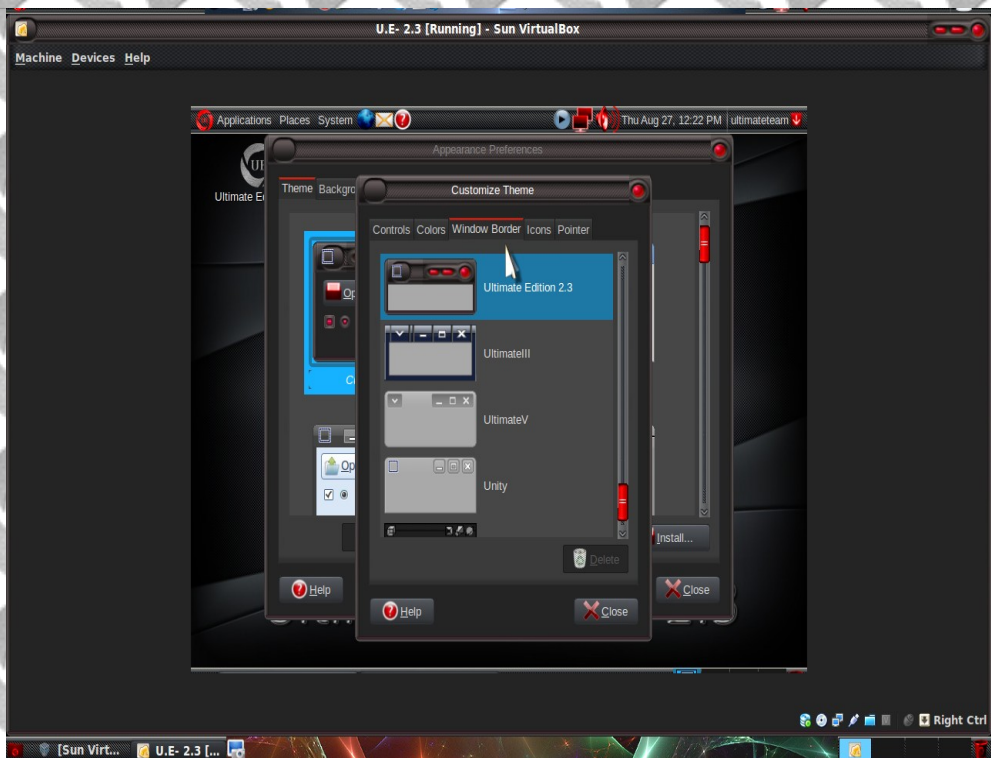
*Click “Customize” to edit your selected theme further*



*Select your desired “Windows decoration/Controls”*

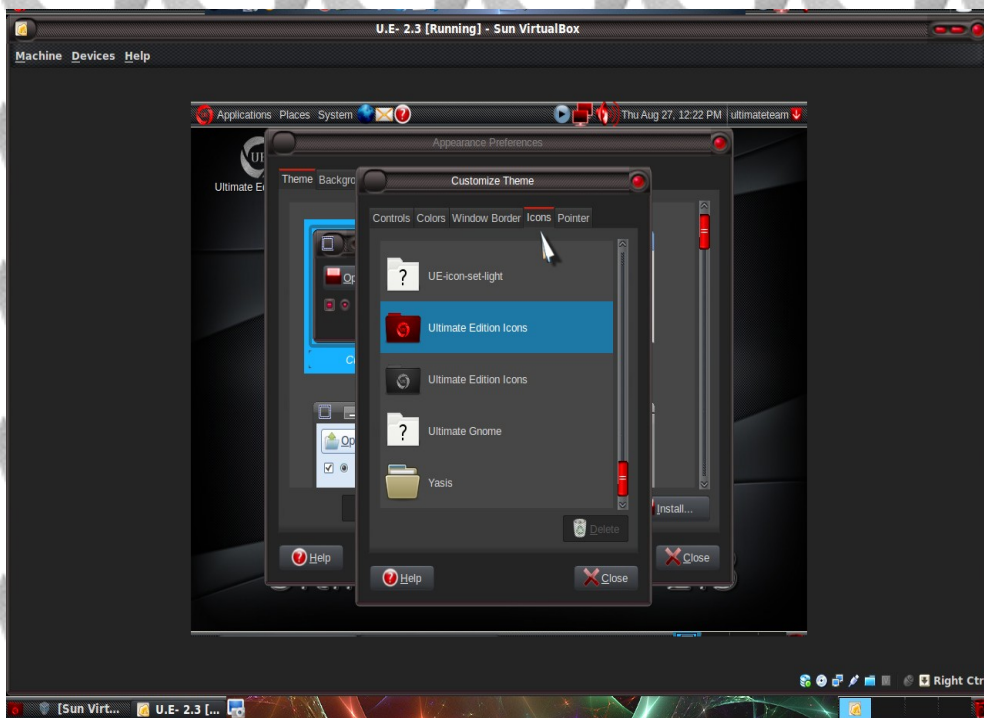


*Select your desired “Colors”*

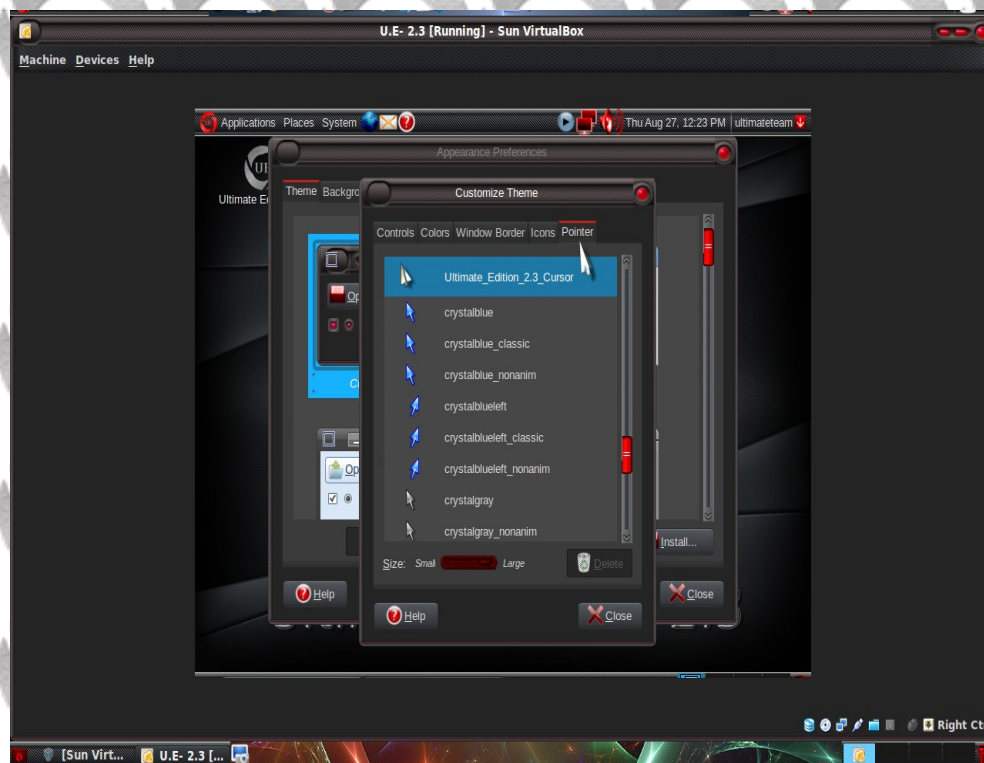


*Select your desired “Window borders”*

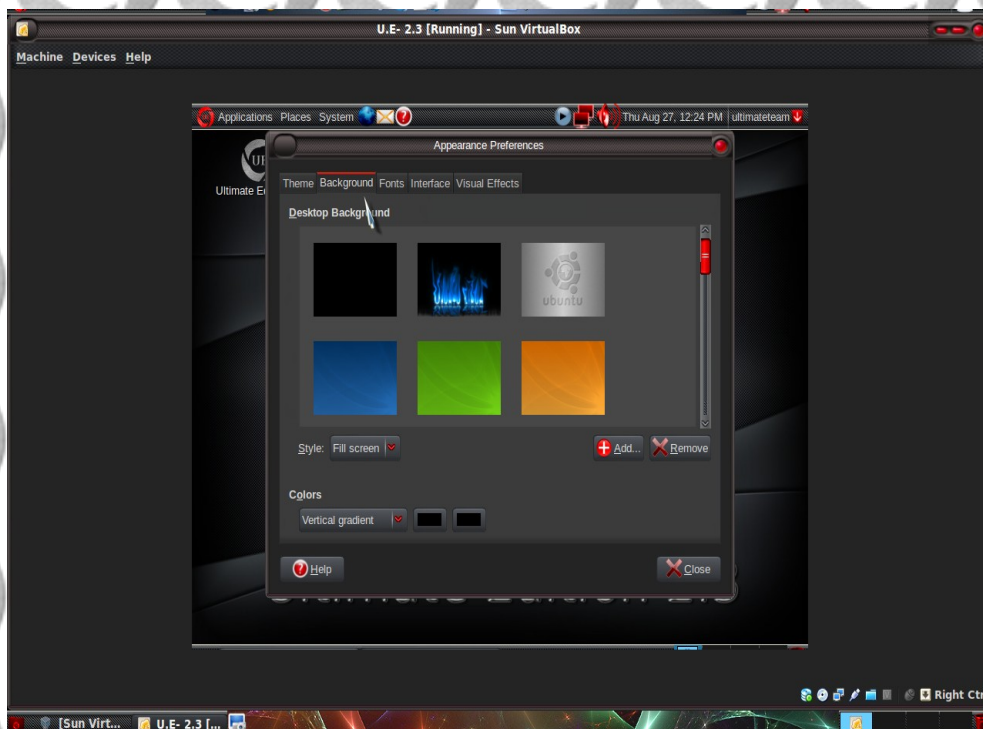




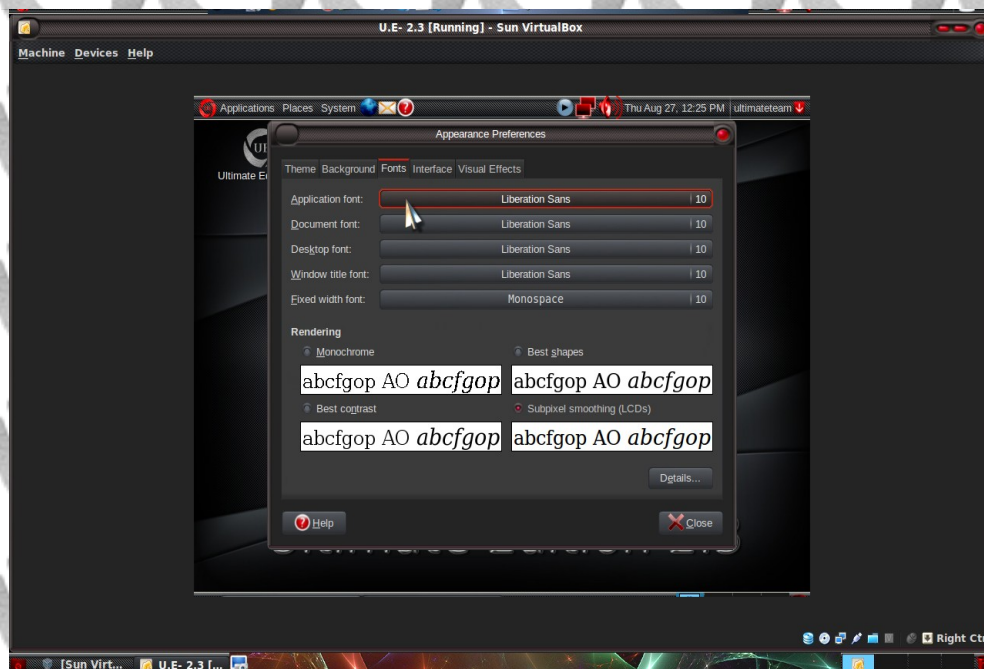
*Select your desired "Icons set"*



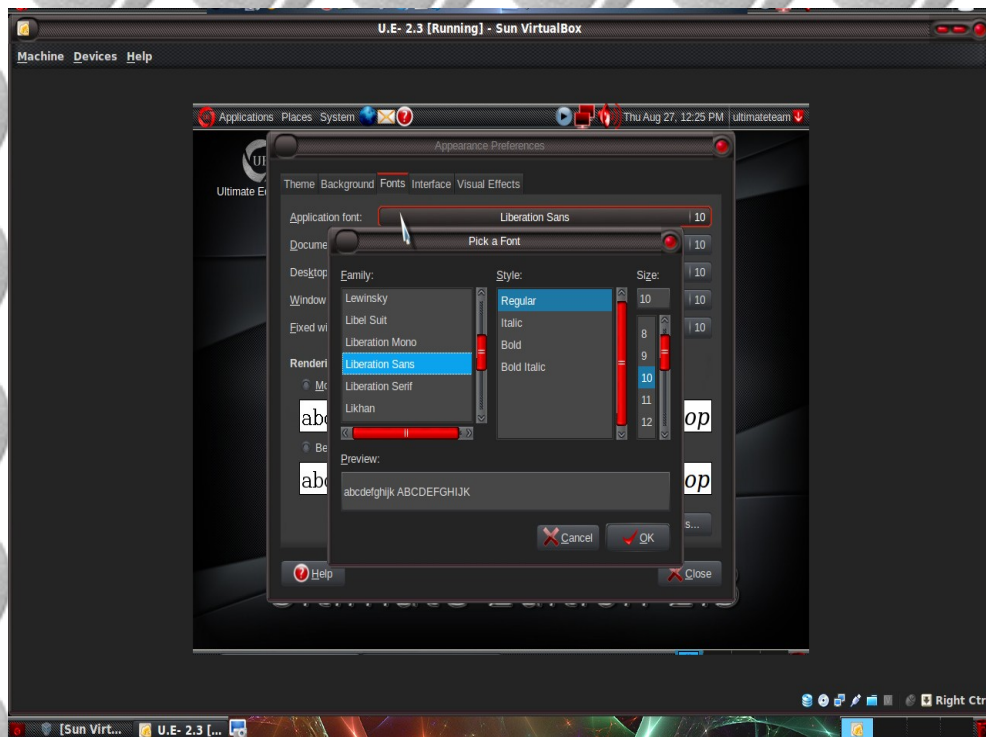
*Select your desired "Mouse pointer"*



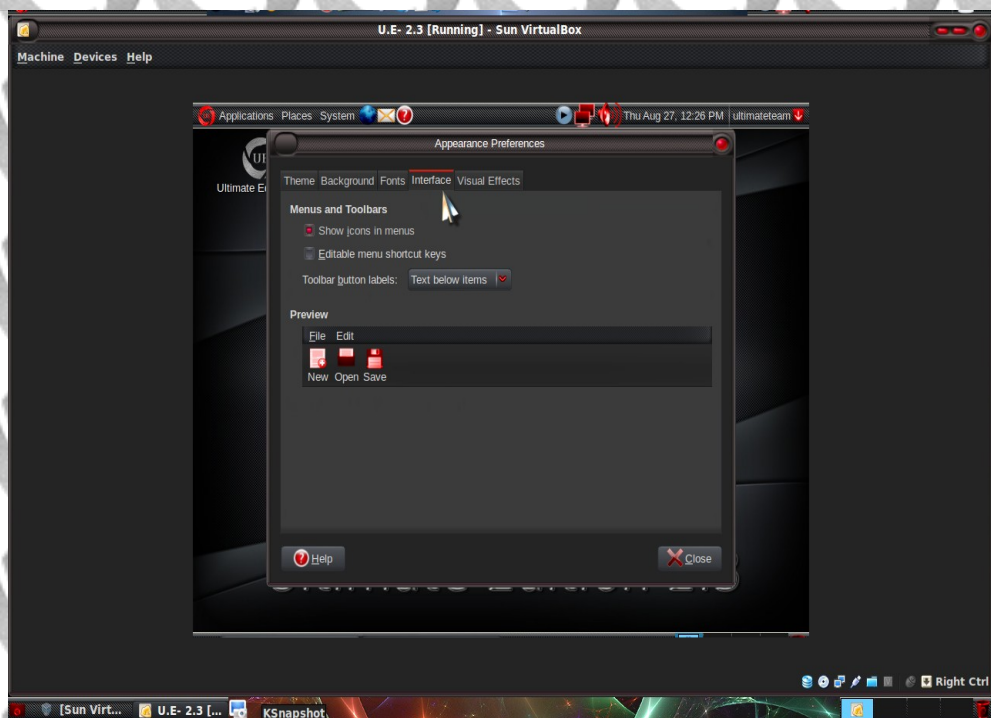
*Select your desired “Background/Wallpaper”*



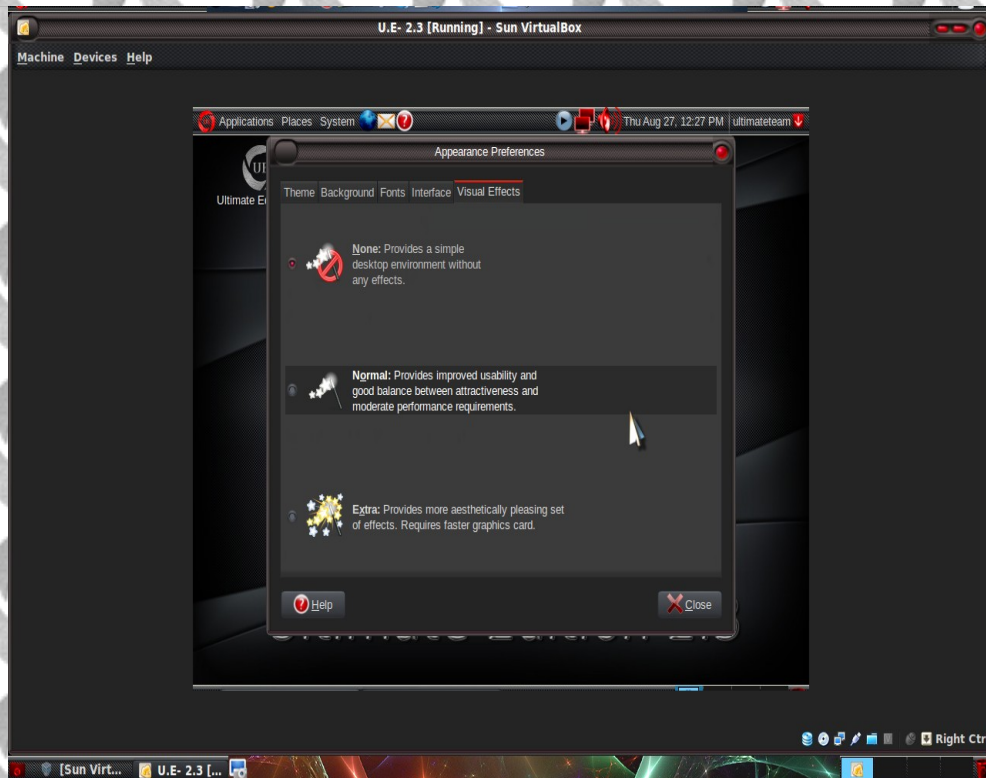
*Select your desired “Fonts” for Window titlebars, Applications, Menus, etc.*



*Customize your selected Fonts further*



*Make desired changes in "Interface"*



*Enable “Visual effects/Eye candy”. Here, depending upon your Graphic cards strength you can choose levels of effects you want to have. Generally “Normal” is good for most of the cards. For “Extra” you will need a reasonably powerful Graphics cards. Select “None” to disable any effects.*

*Have fun !!!*