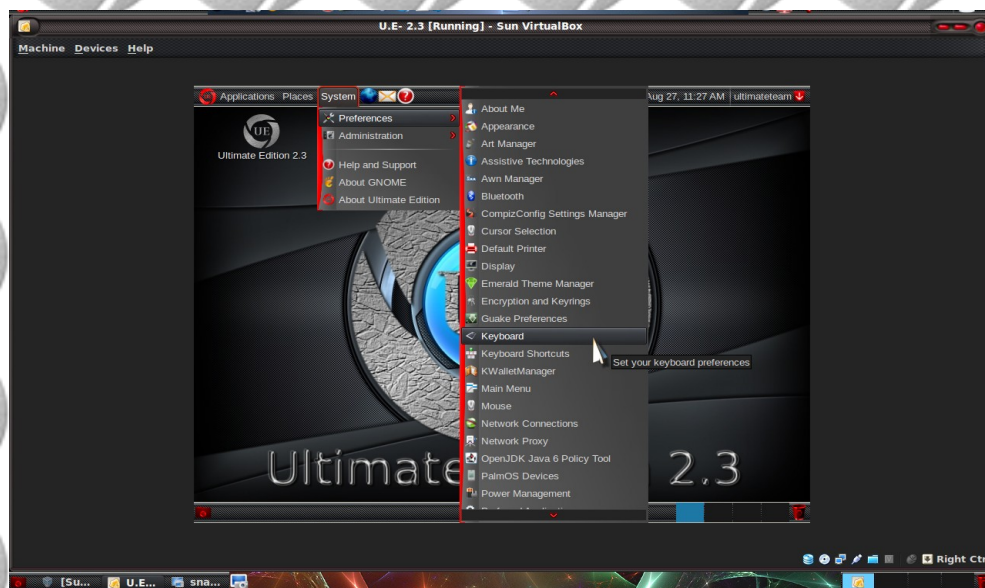
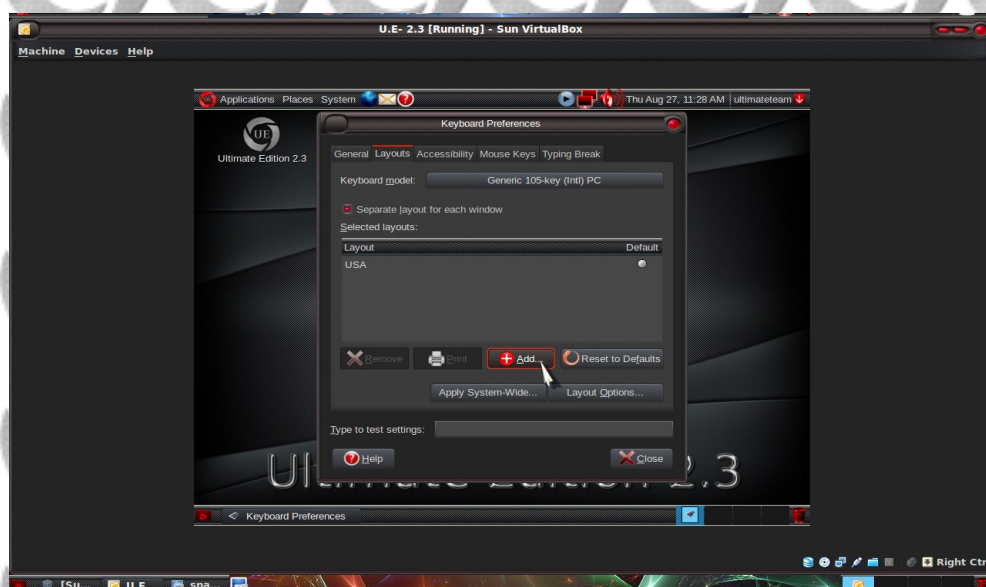


Configure your Keyboard

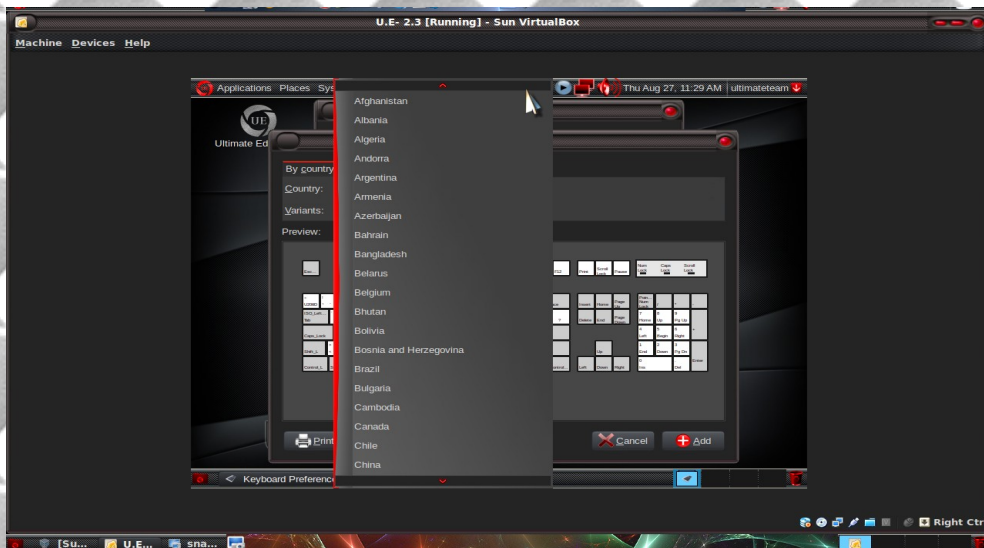
Mostly your keyboard will be automatically configured but in case you want a new layout you can easily do that in Ultimate edition. Here's a few simple steps to accomplish this.



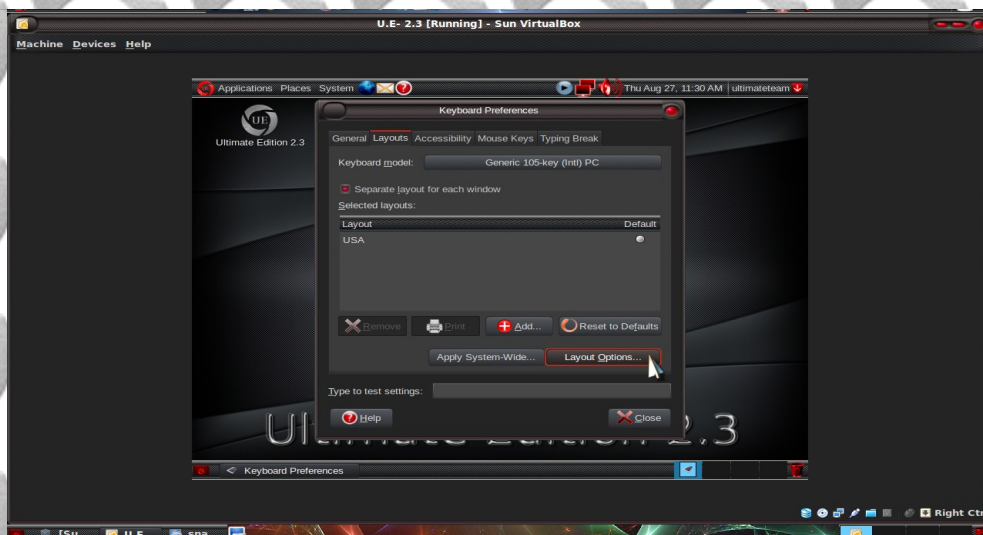
Select Menu > System > Preferences > Keyboard



To add a new keyboard layout click Add under layout tab



Select your preferred keyboard layout



Click Layout option to further configure your new keyboard layout



Edit configuration as per your particular requirements