

HOW TO -PLAYONLINUX THE GUIDE TO START.

THE GUIDE WILL SHOW YOU STEP BY STEP
HOW TO PREPARE YOURSELF CORRECTLY.
YOU MUST FIRST INSTALL THE SOFTWARE.

ONLY AFTER SUPPORT.FOR YOUR INSTALL DISK.

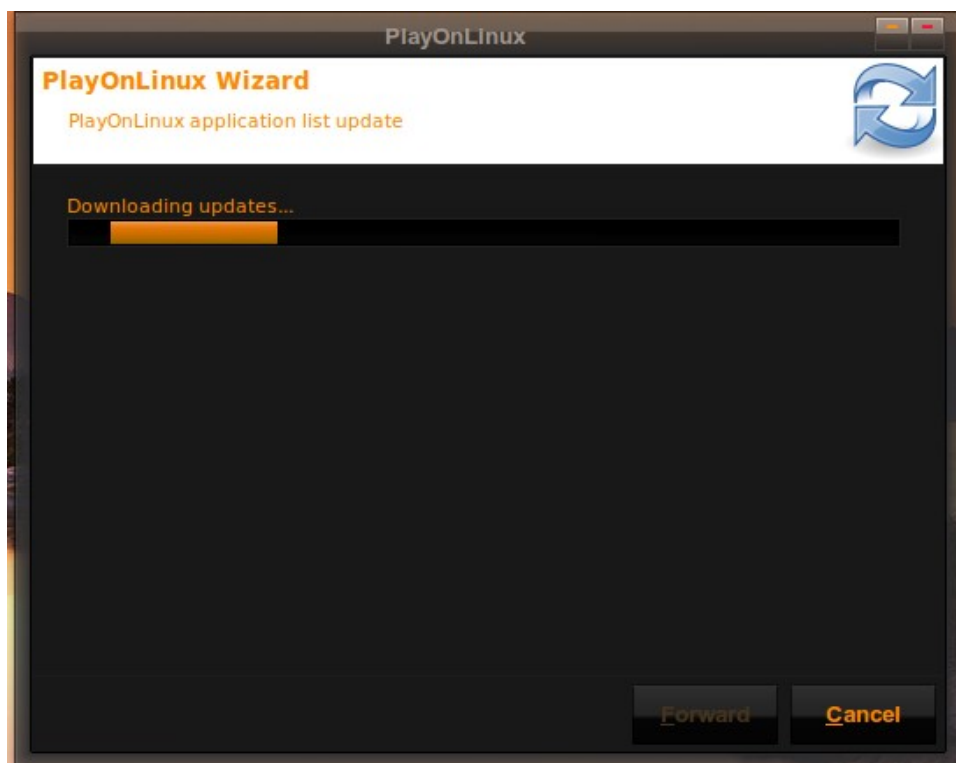
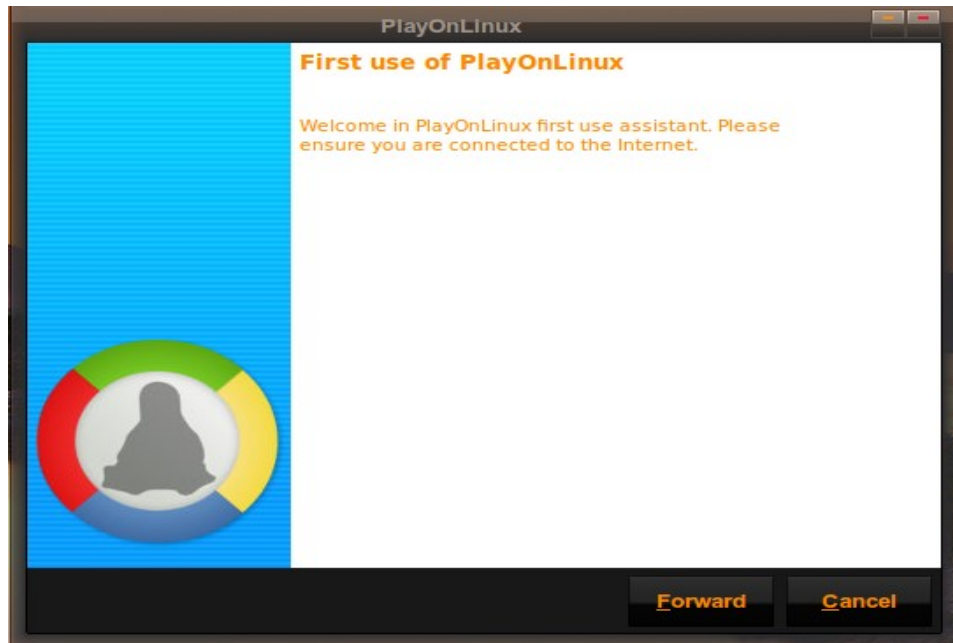
PPL PLEASE FOLLOW THE SCREEN SHOTS AND IT WILL GUIDE YOU
TRUE THE PROCESS.
NEED TO IGNORE THE POP UPS ON THE PROCESS AND CLOSE THEM.
AFTER INSTALLING ALL THE SUPPORT NEEDED FOR YOUR GAMES TO
WORK WITH.
JUST THEN YOU WILL START YOUR PERSONALLY GAMES FROM YOUR
CD/DVD.

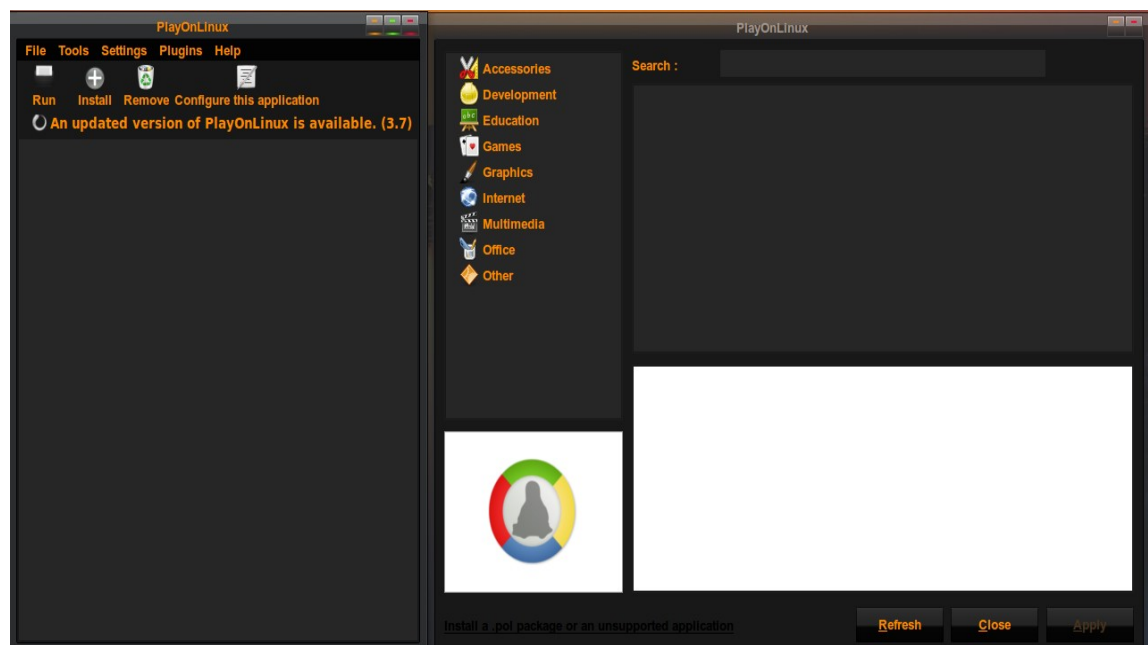
TO AVID PROBLEMS.THIS PROCESS MUST START AND FINISH BEFORE
YOU WILL START TO PLAY.
MAKE SURE THAT YOUR VIDEO CARD IS UPDATE AND SUPPORT 3D.
THEN YOU CAN START THE PROCESS OF THE PLAYONLINUX
INSTALLATION.

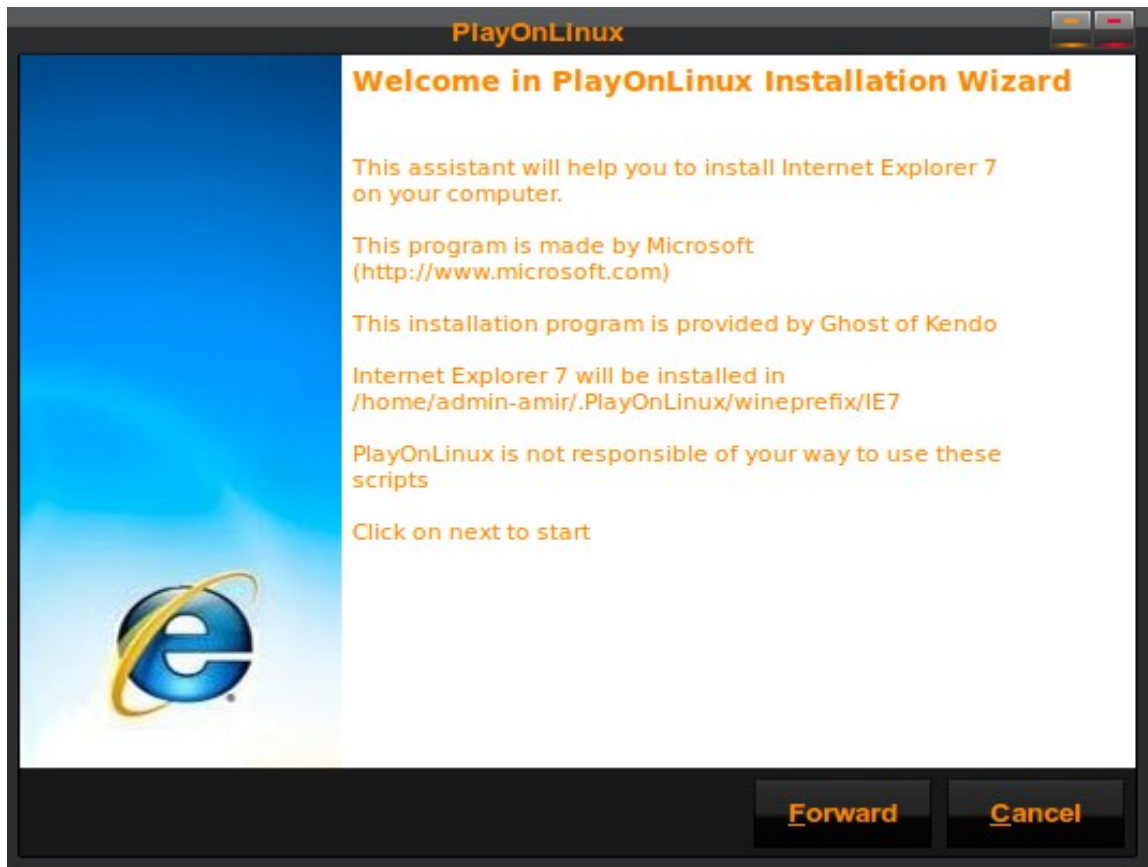
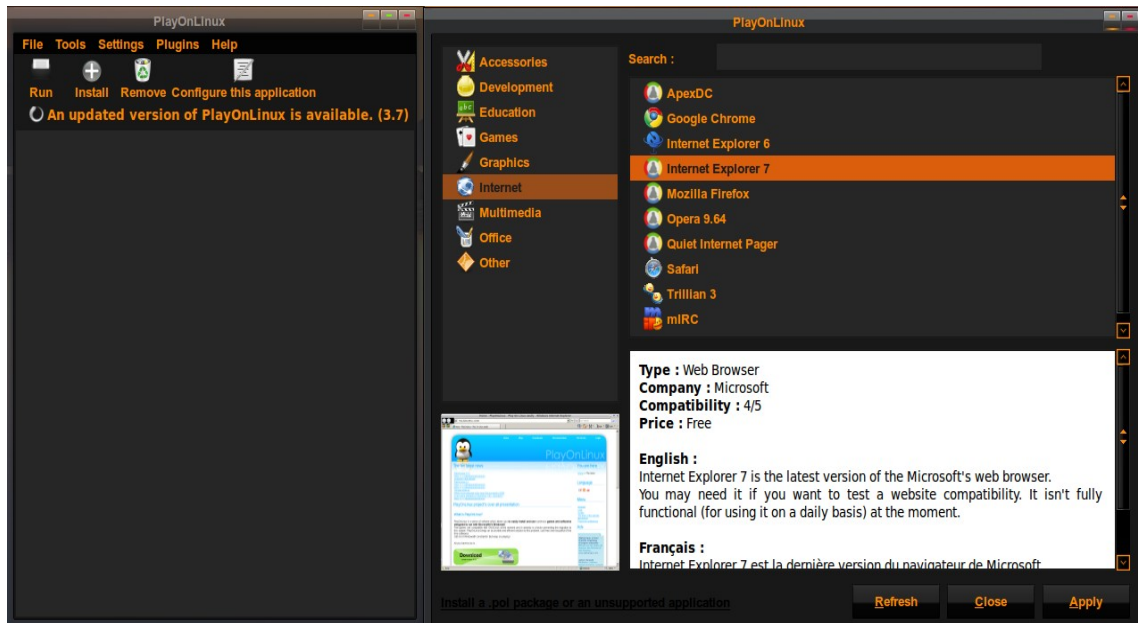
I HAVE MADE ALL THE PROCESS FOR YOU TO PLAY AND WORK WITH
THE SOFTWARE IN THE RIGHT WAY.
THEN YOU CAN GO ON ALONE.
HOP THIS GUIDE WILL HELP YOU TO DO YOUR THINGS WITH
PLAYONLINUX.

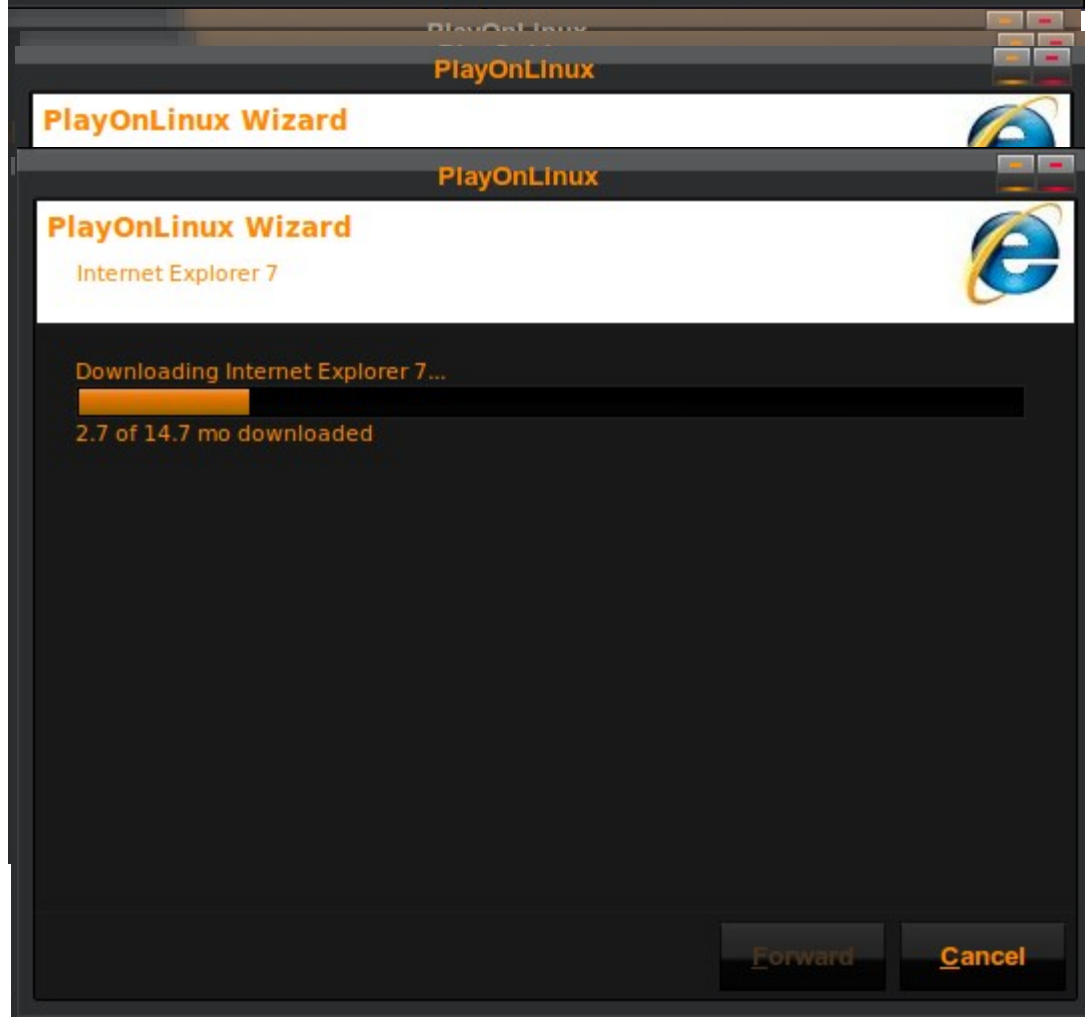
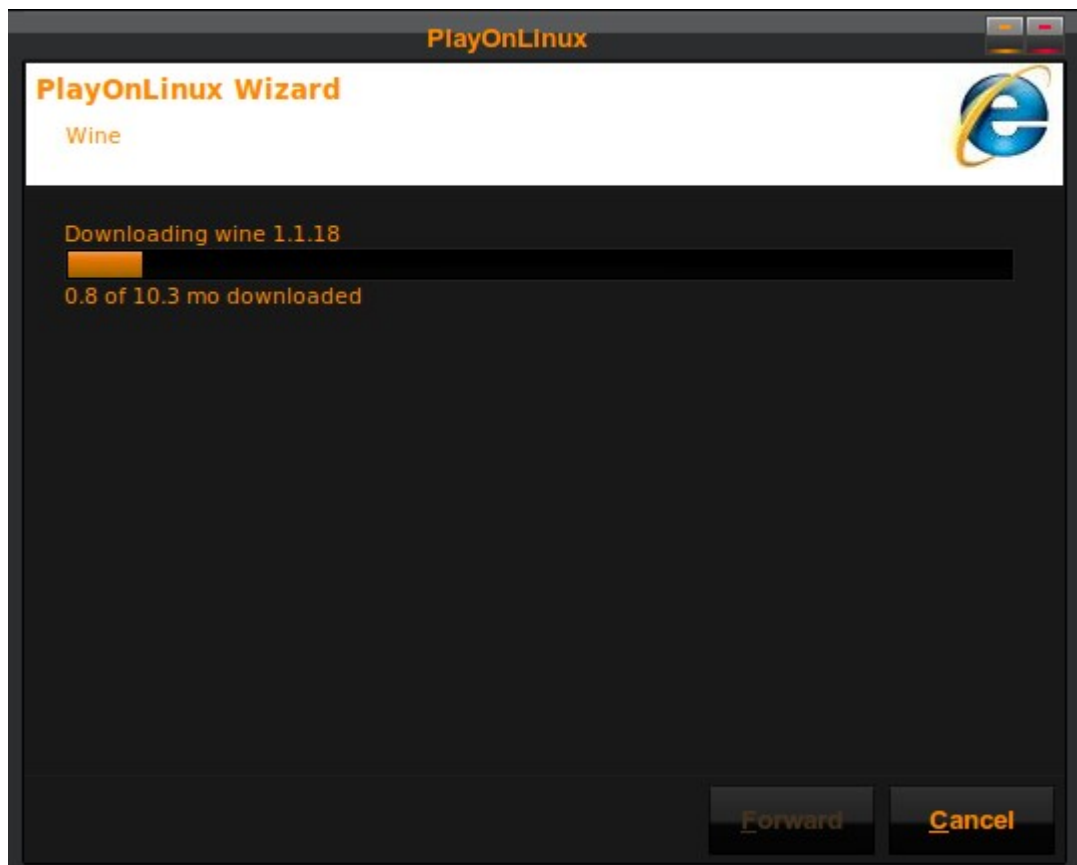
HERE IS YOUR GUIDE WITH OUT NO MORE INFO.
JUST DO WHAT YOU SEE= THE BEST WAY TO WORK WITH
PLAYONLINUX.

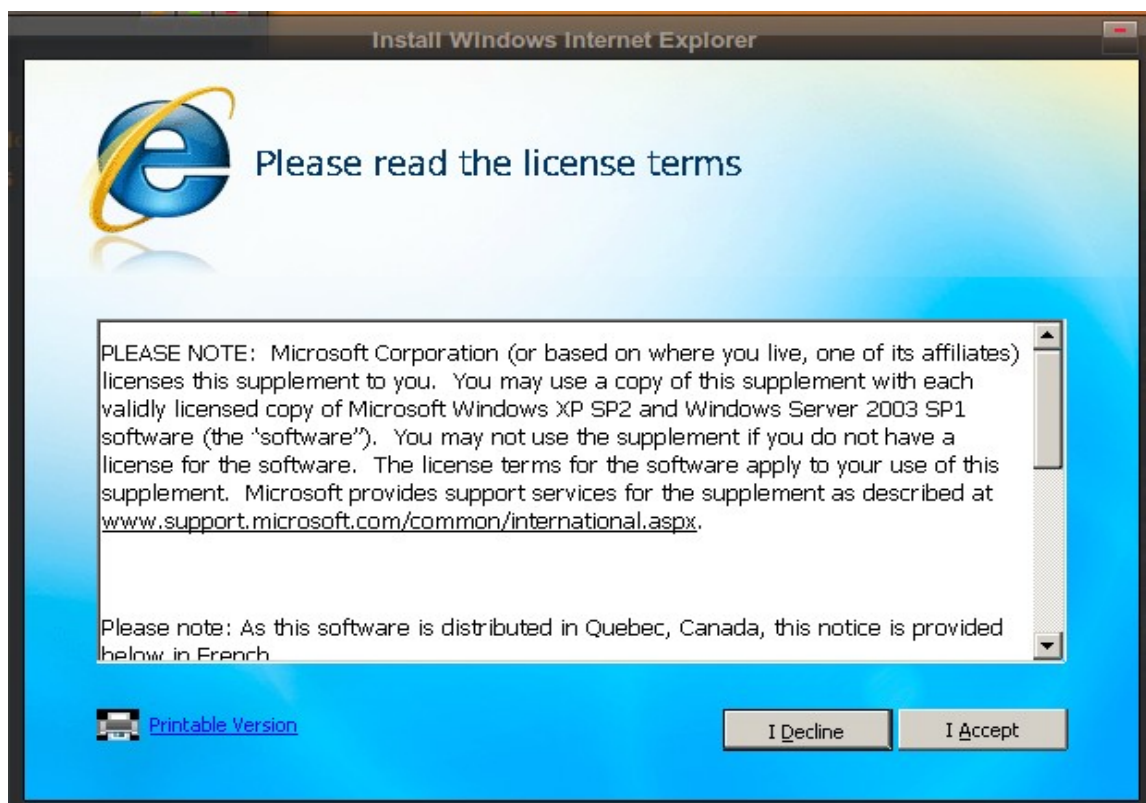
INSTALL THE SOFTWARE.



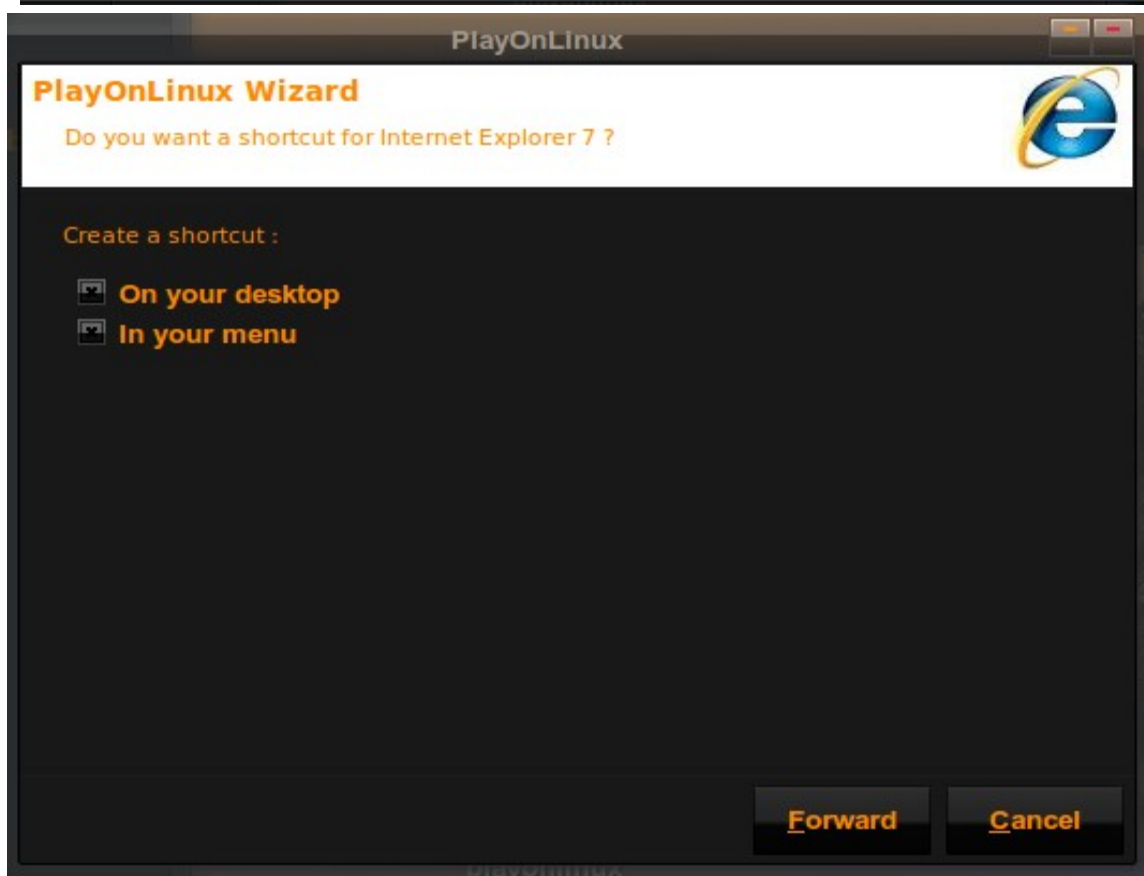


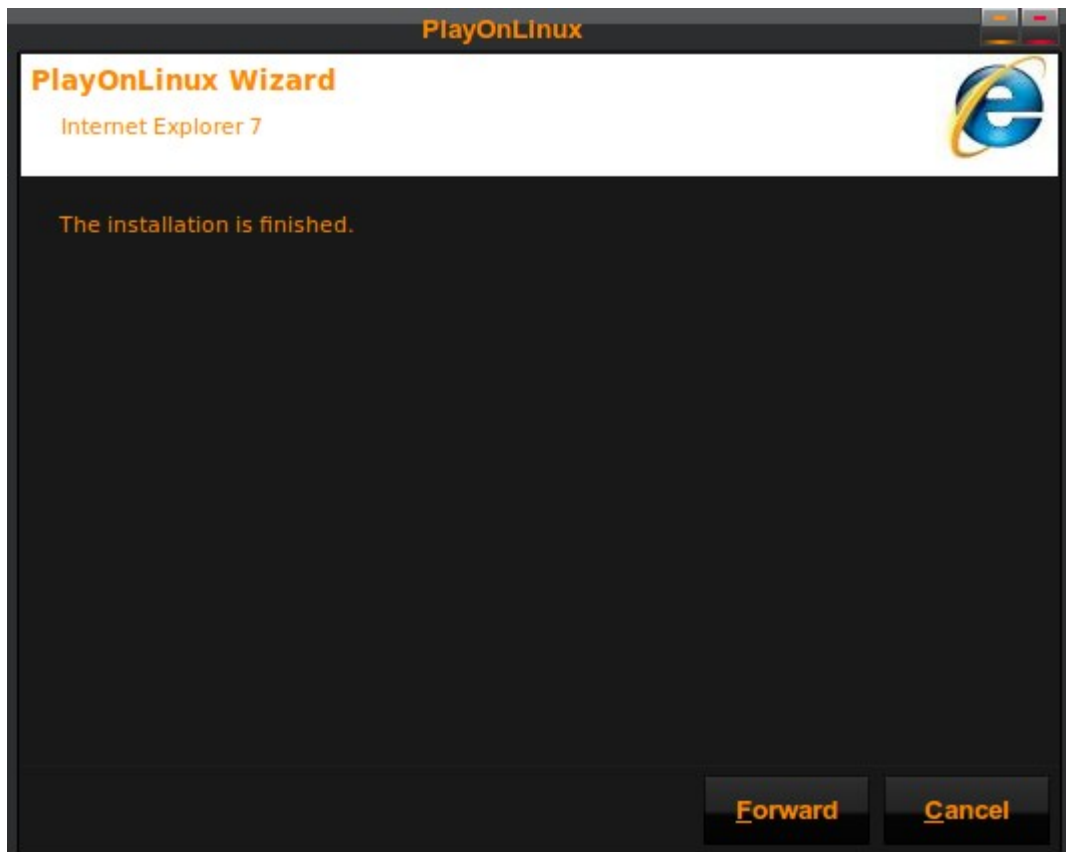


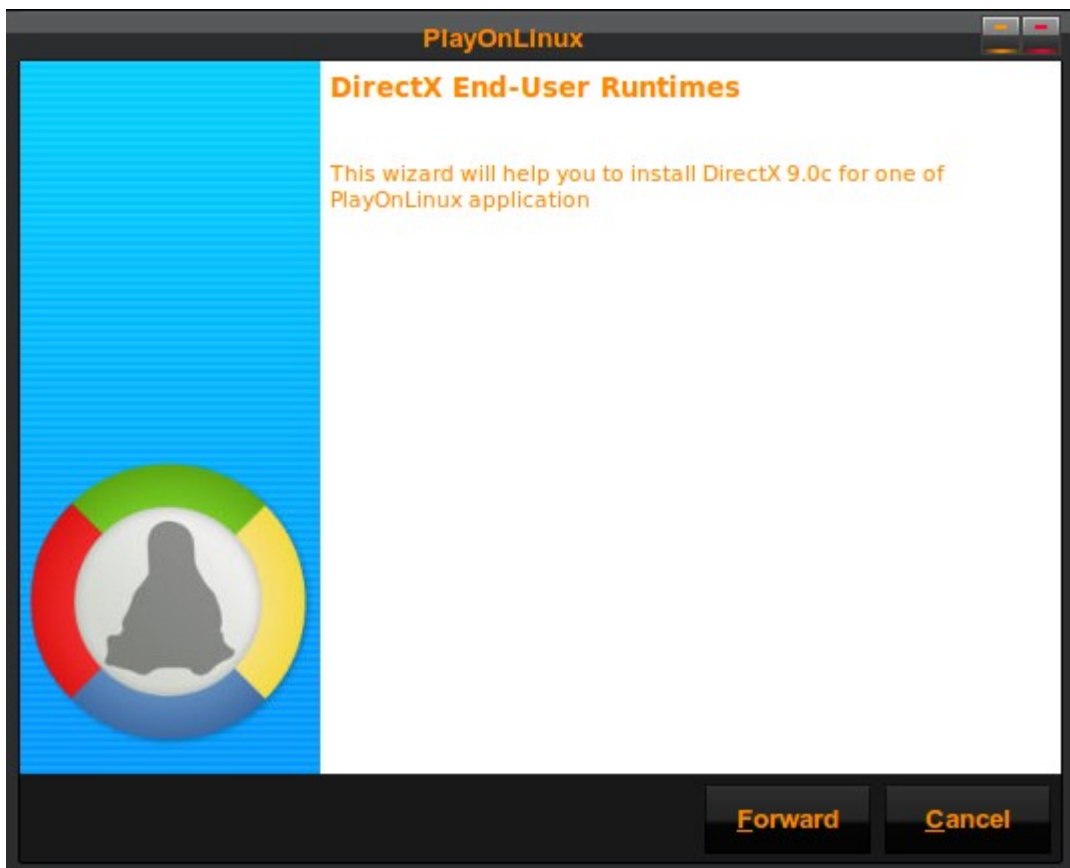
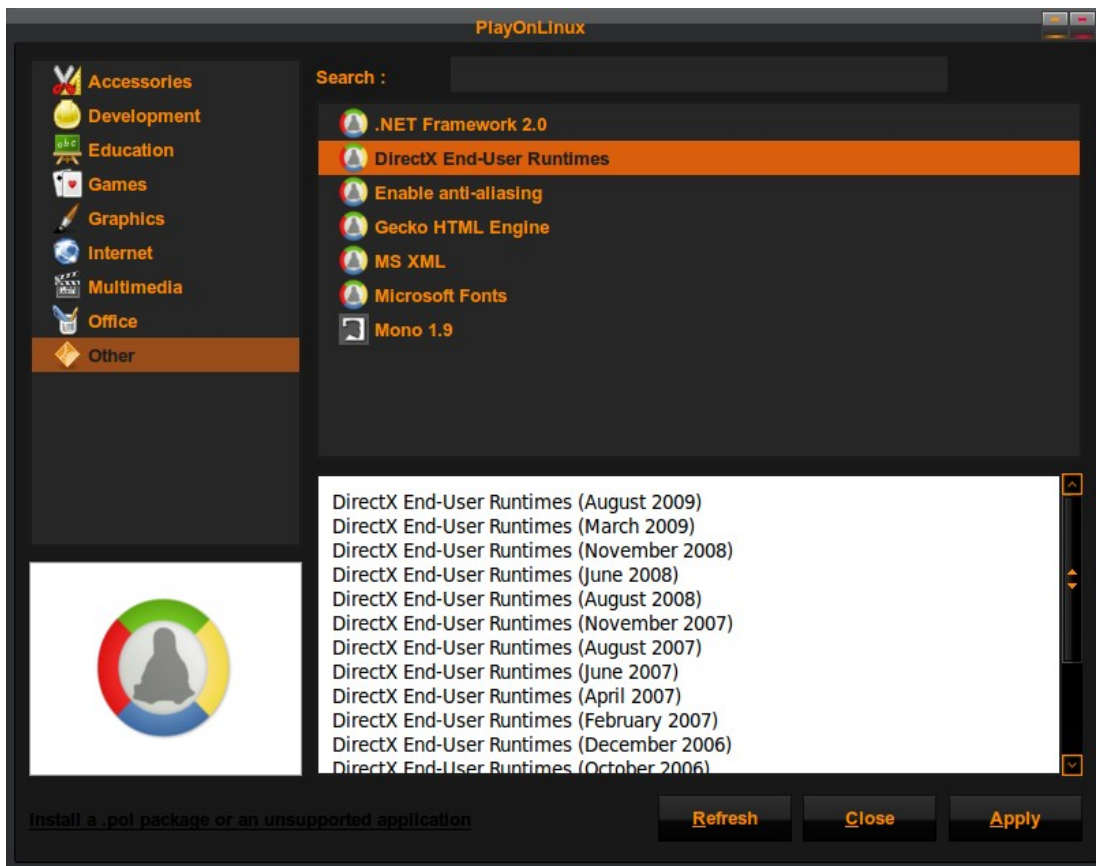


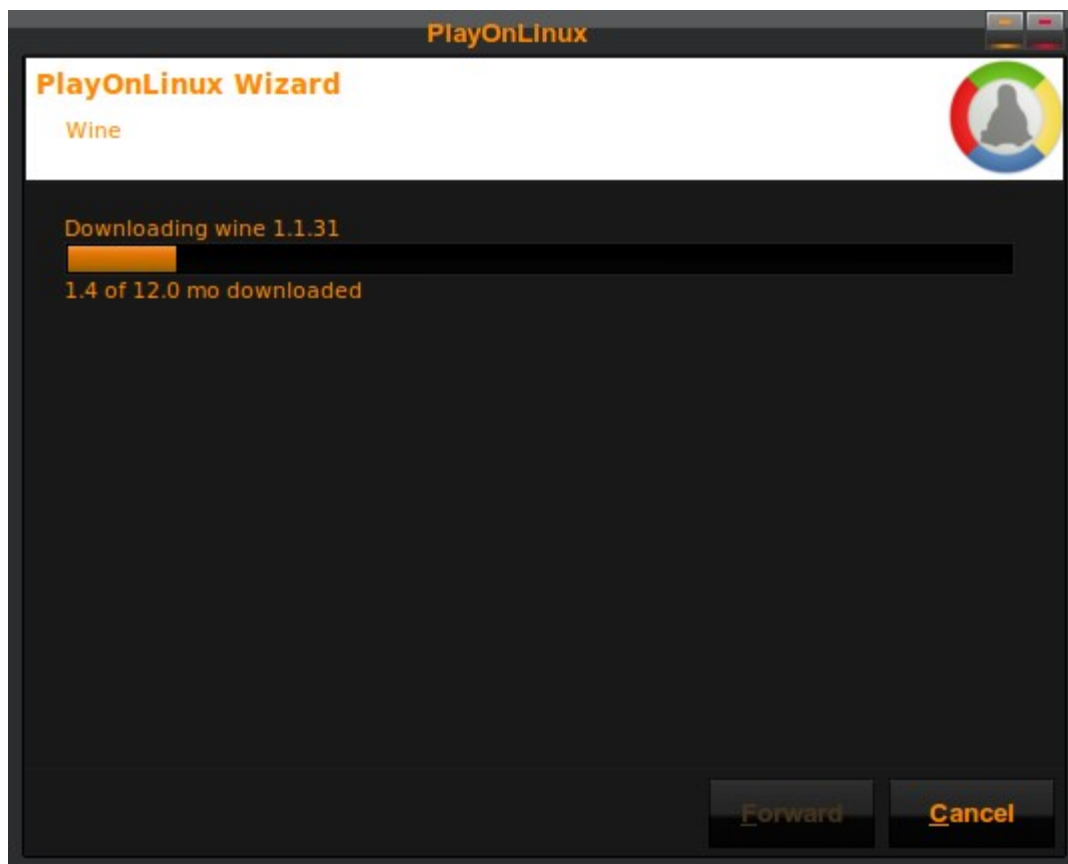
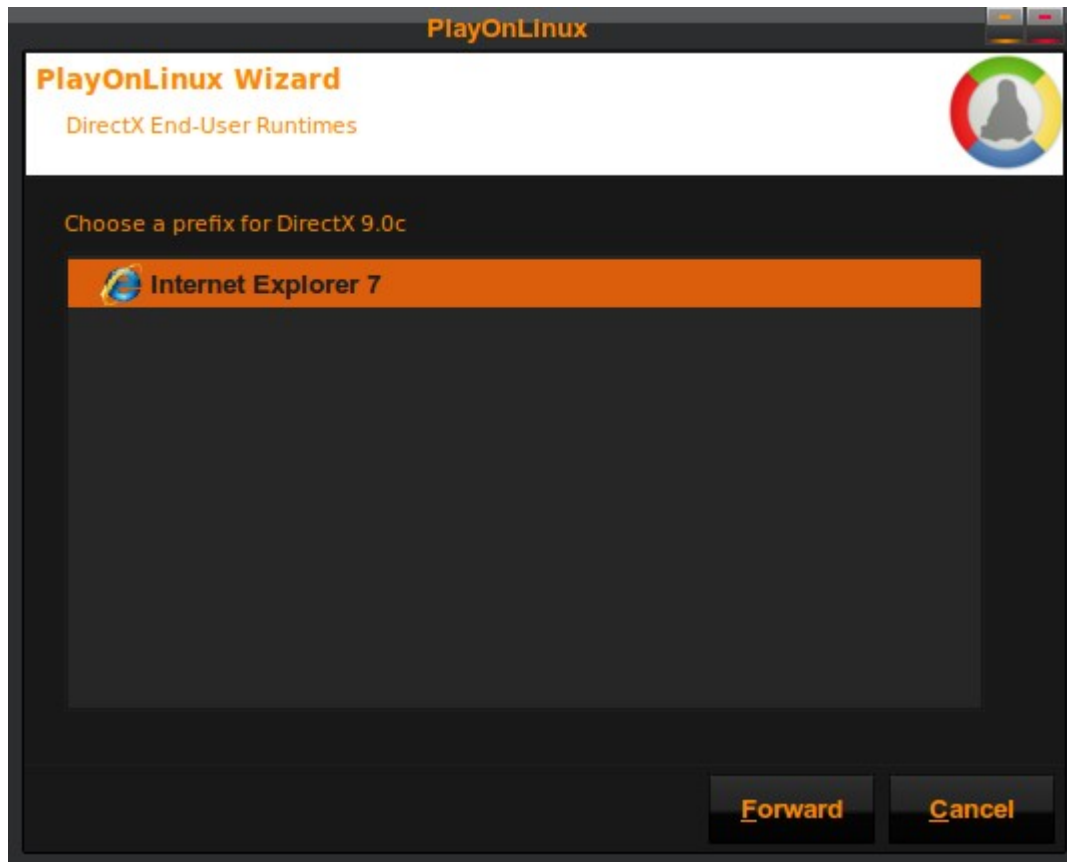


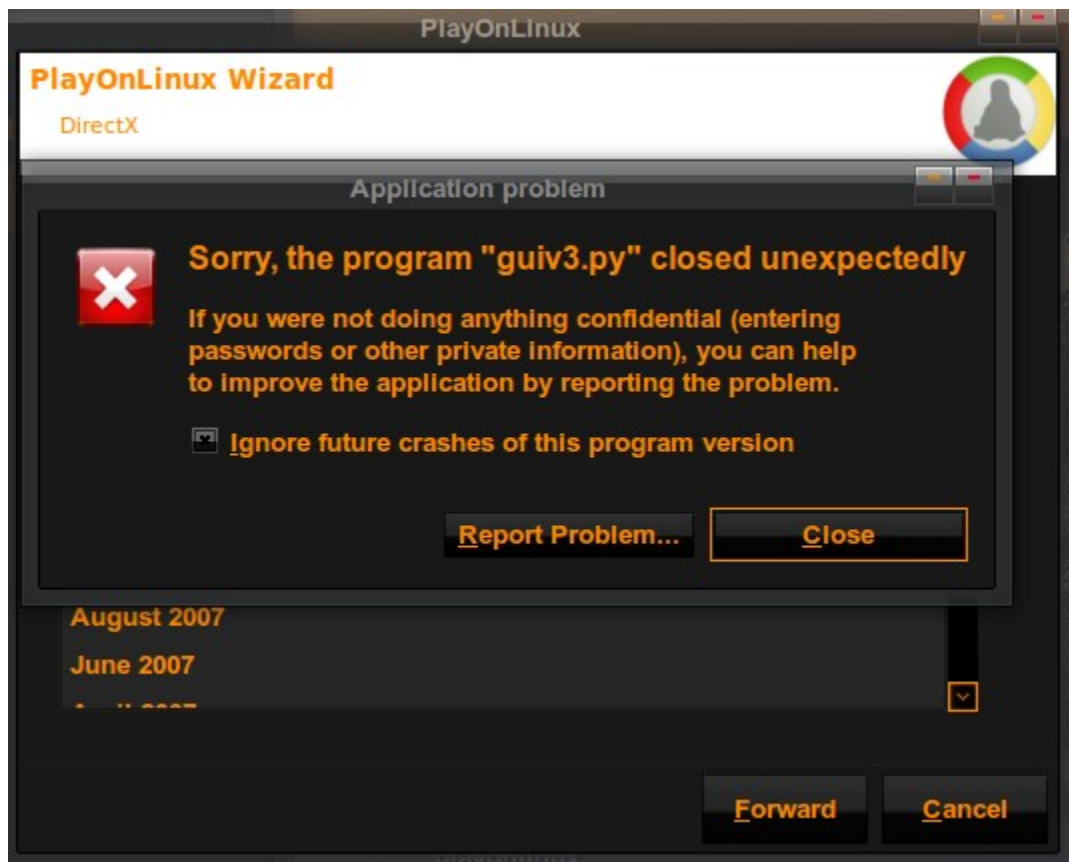












PlayOnLinux

PlayOnLinux Wizard

DirectX End-User Runtimes



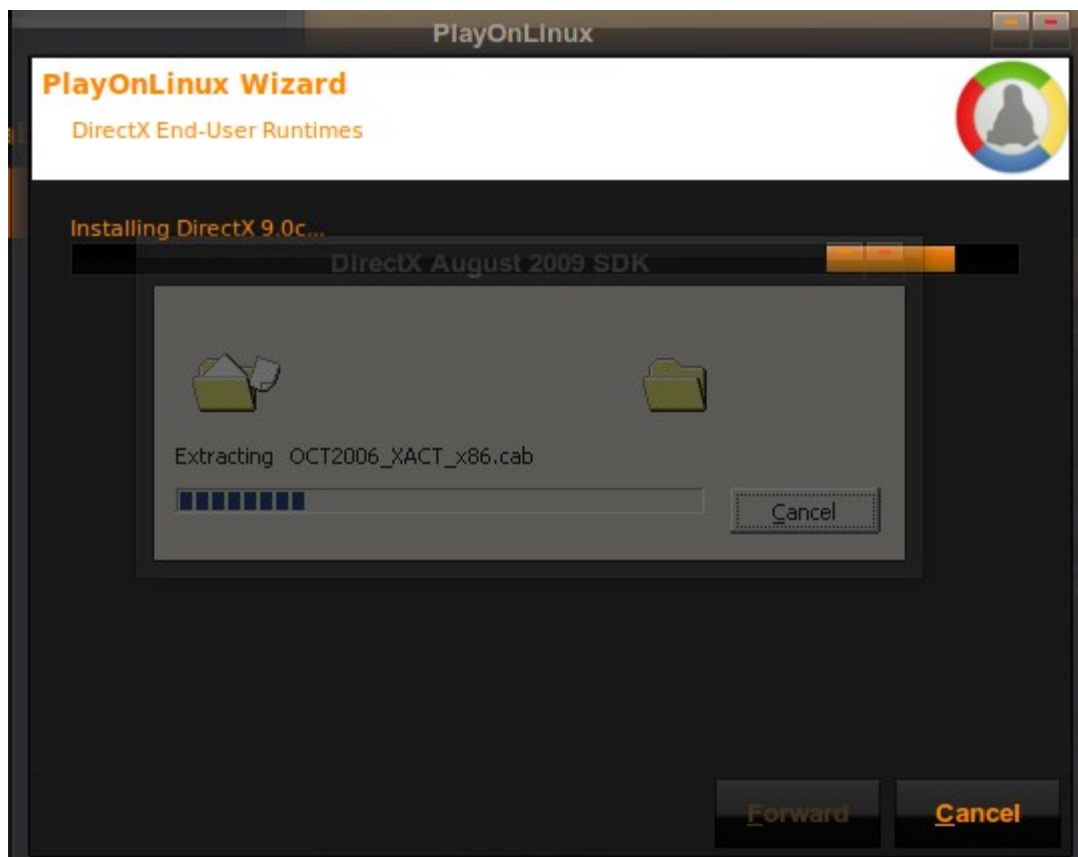
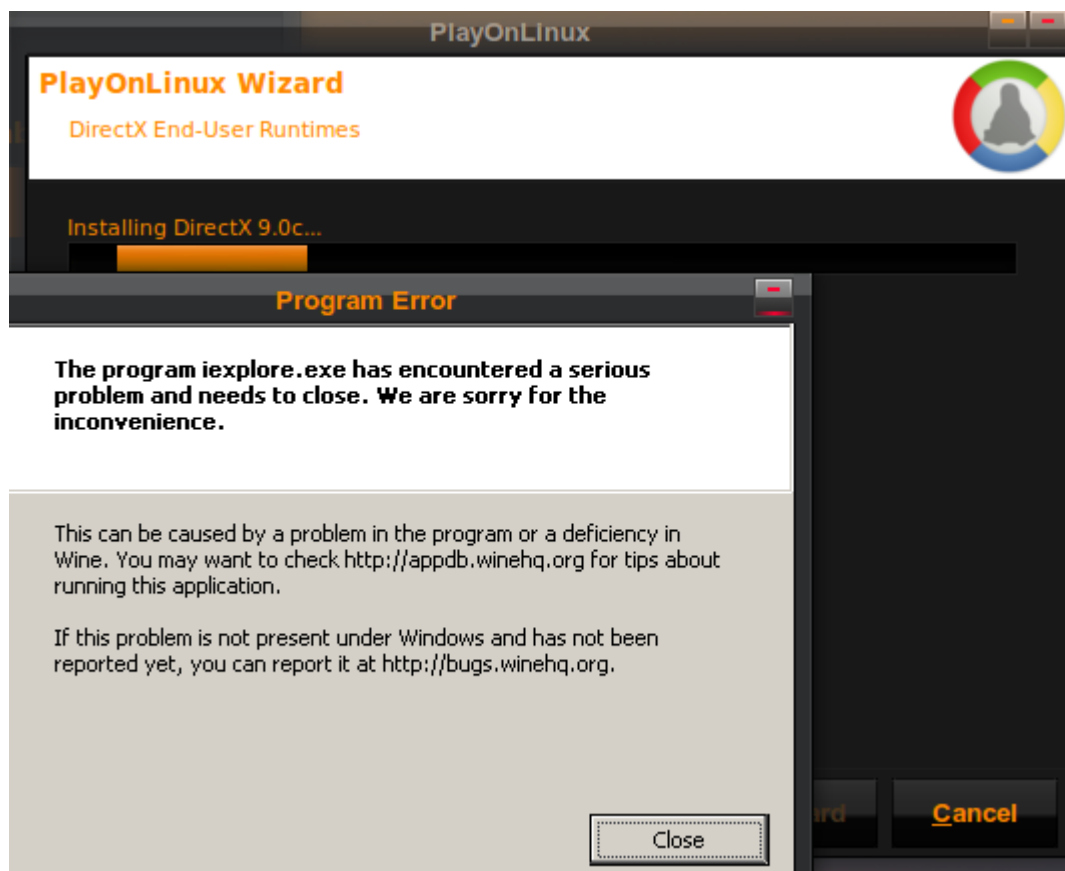
Downloading DirectX 9.0c

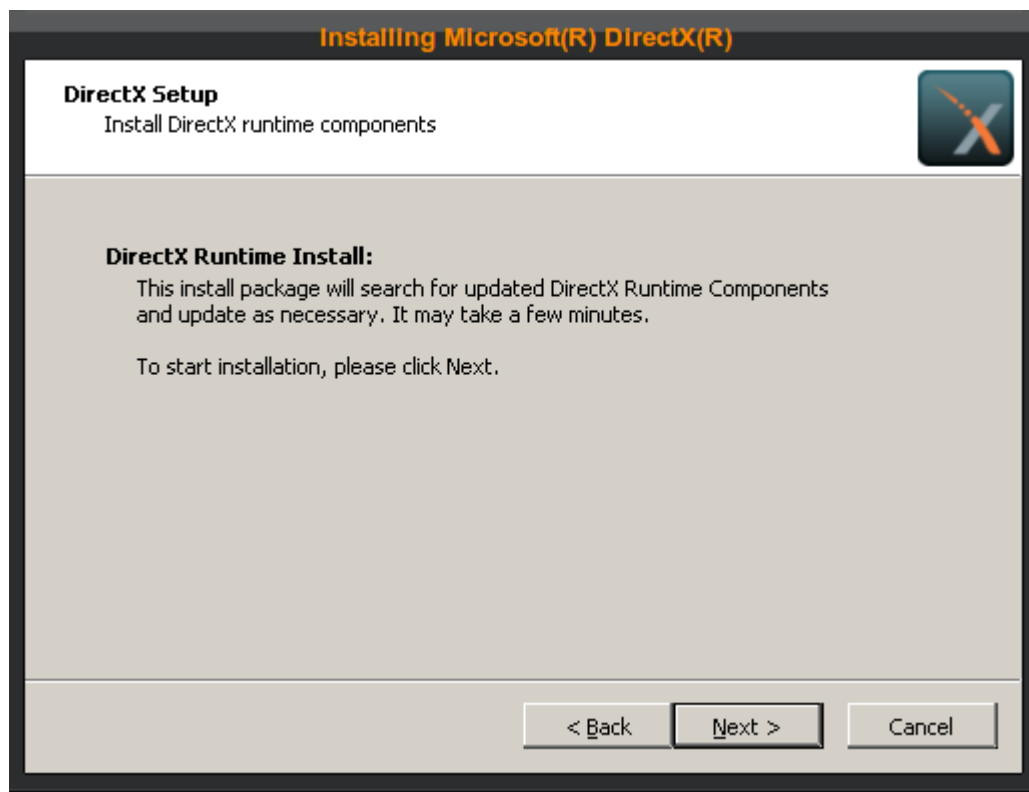


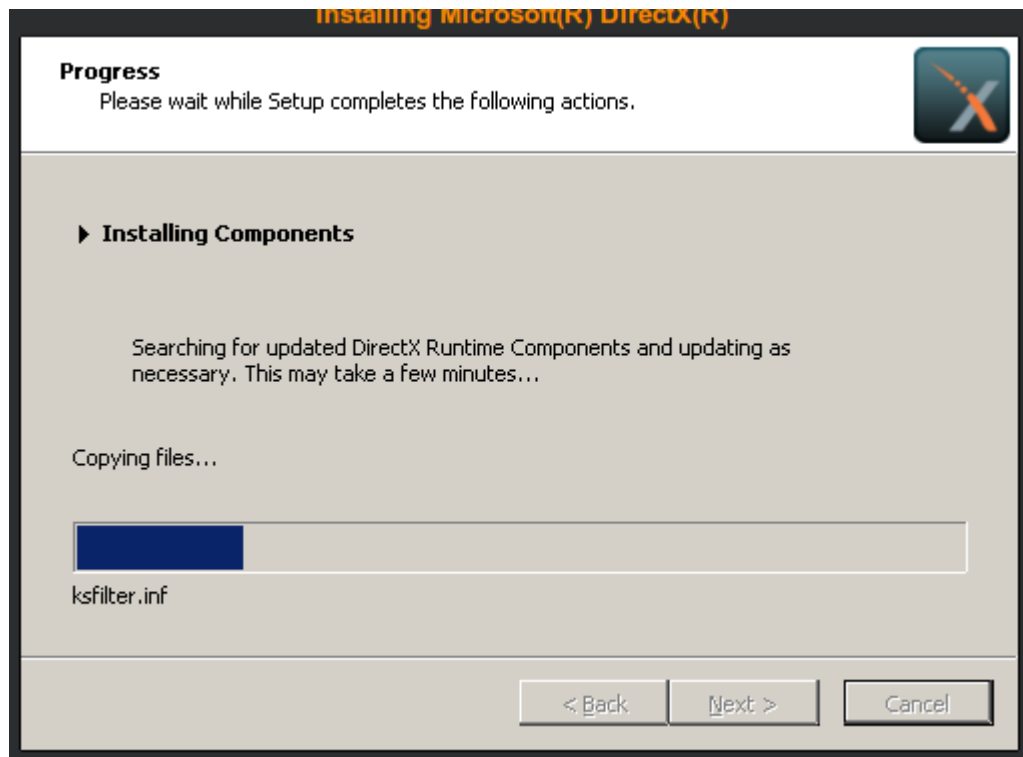
19.0 of 103.3 mo downloaded

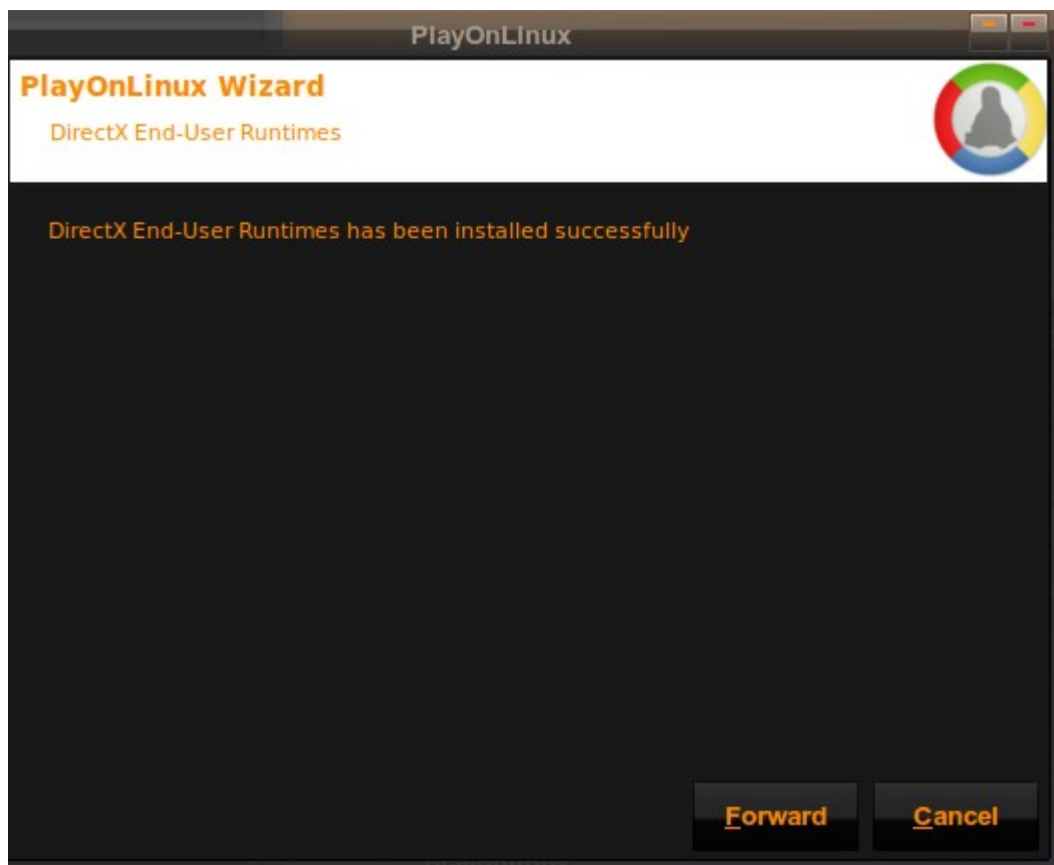
Forward

Cancel











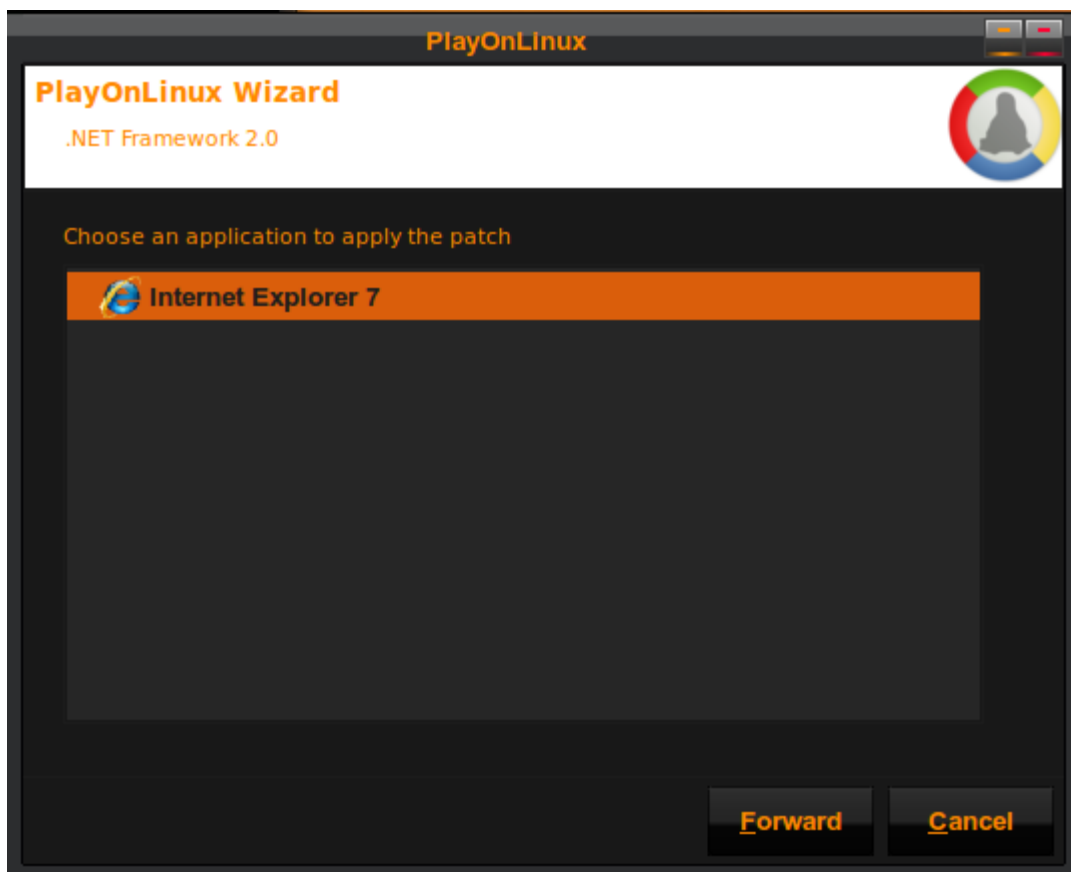
DirectX End-User Runtimes

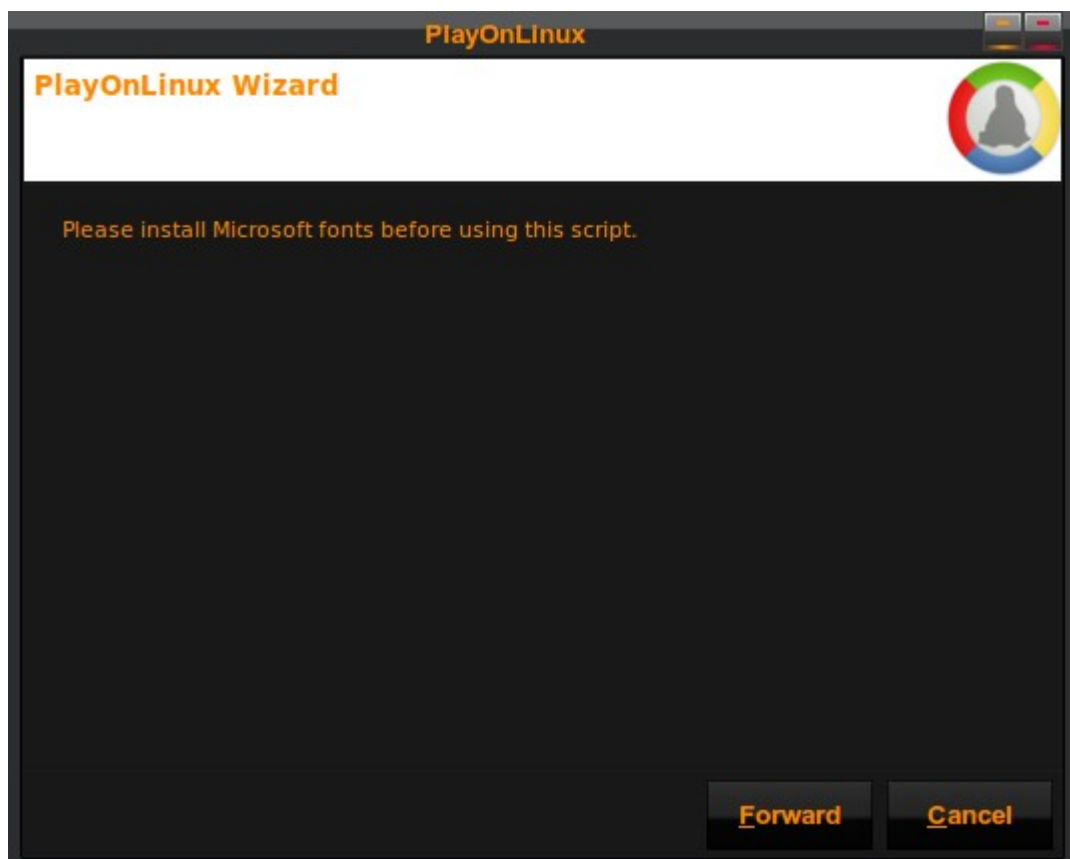
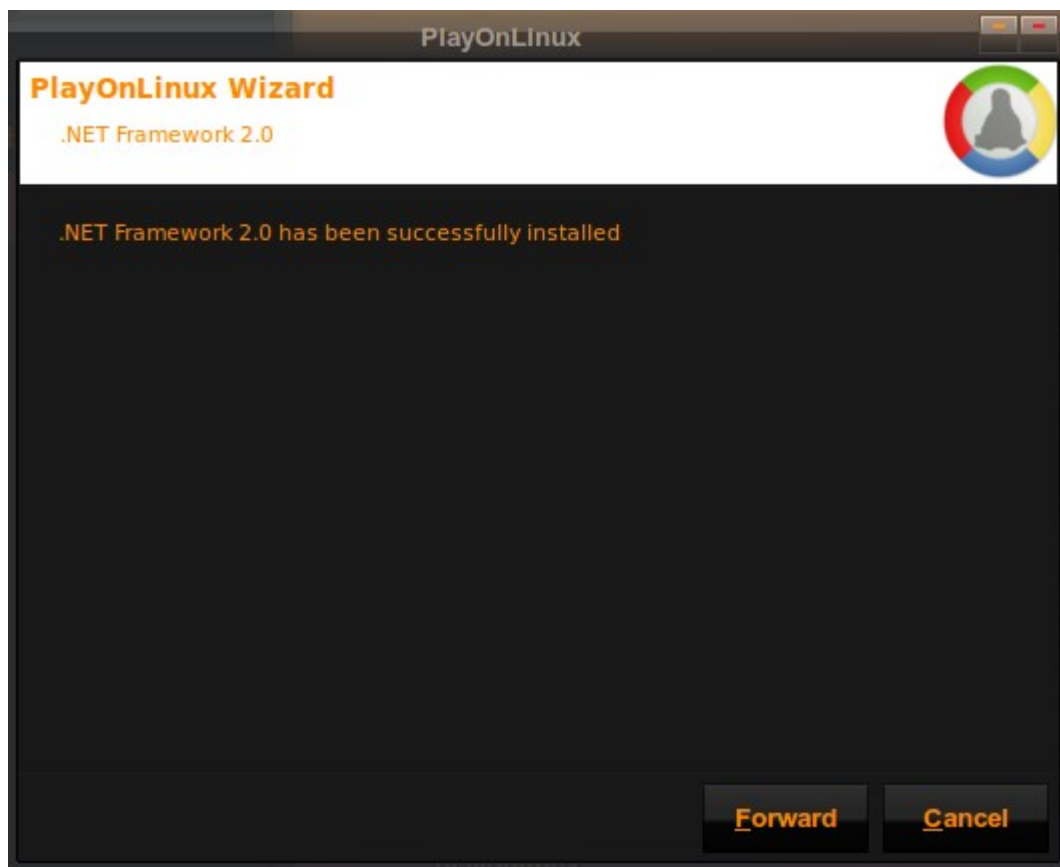
This wizard will help you to install DirectX 9.0c for one of PlayOnLinux application

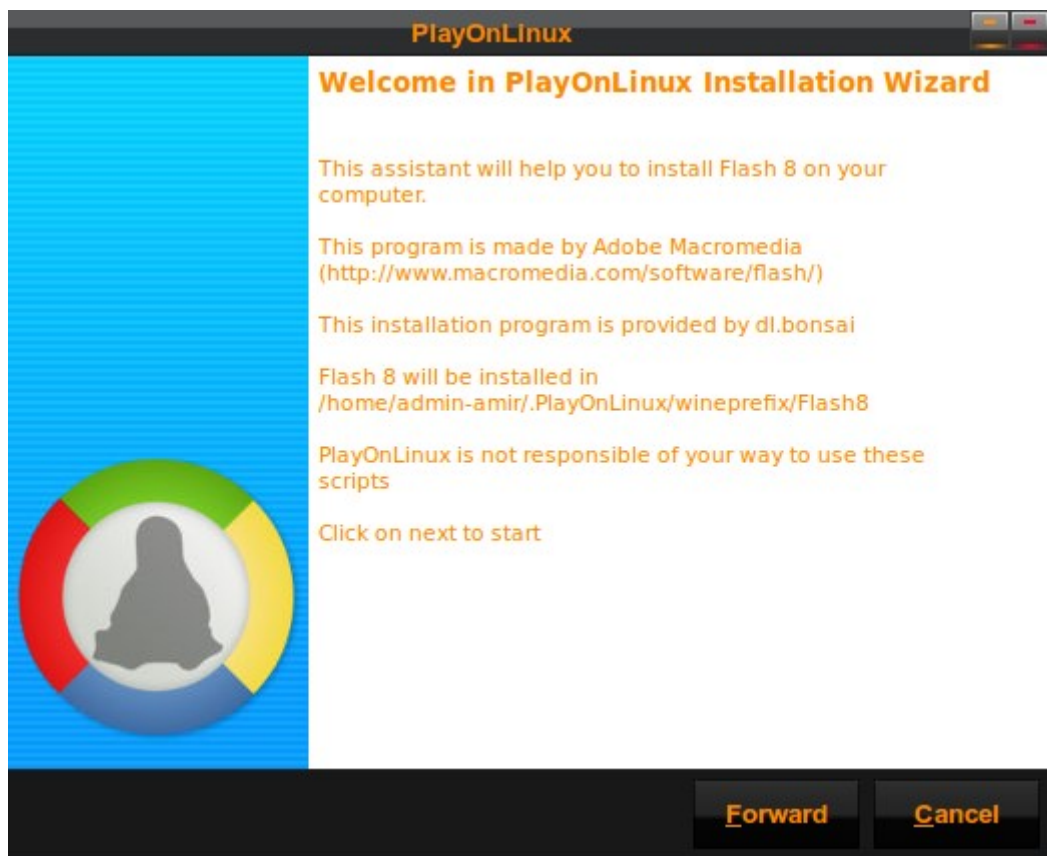
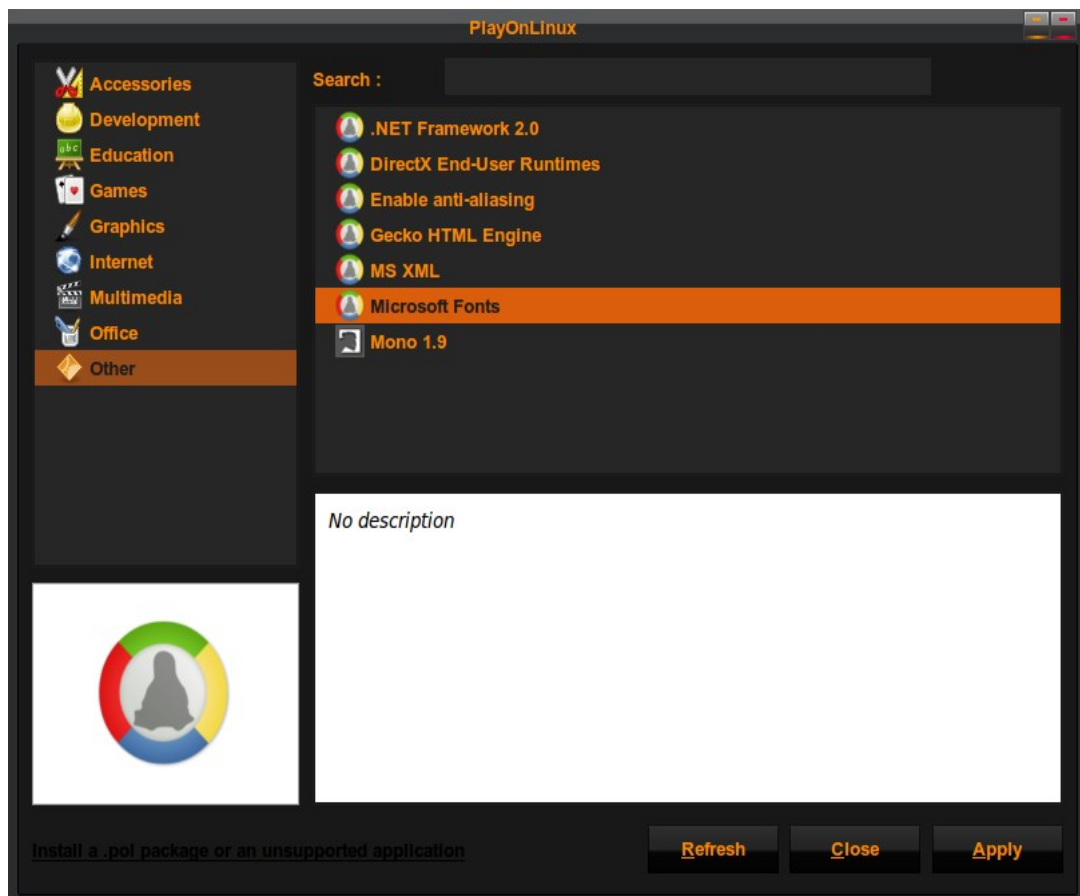


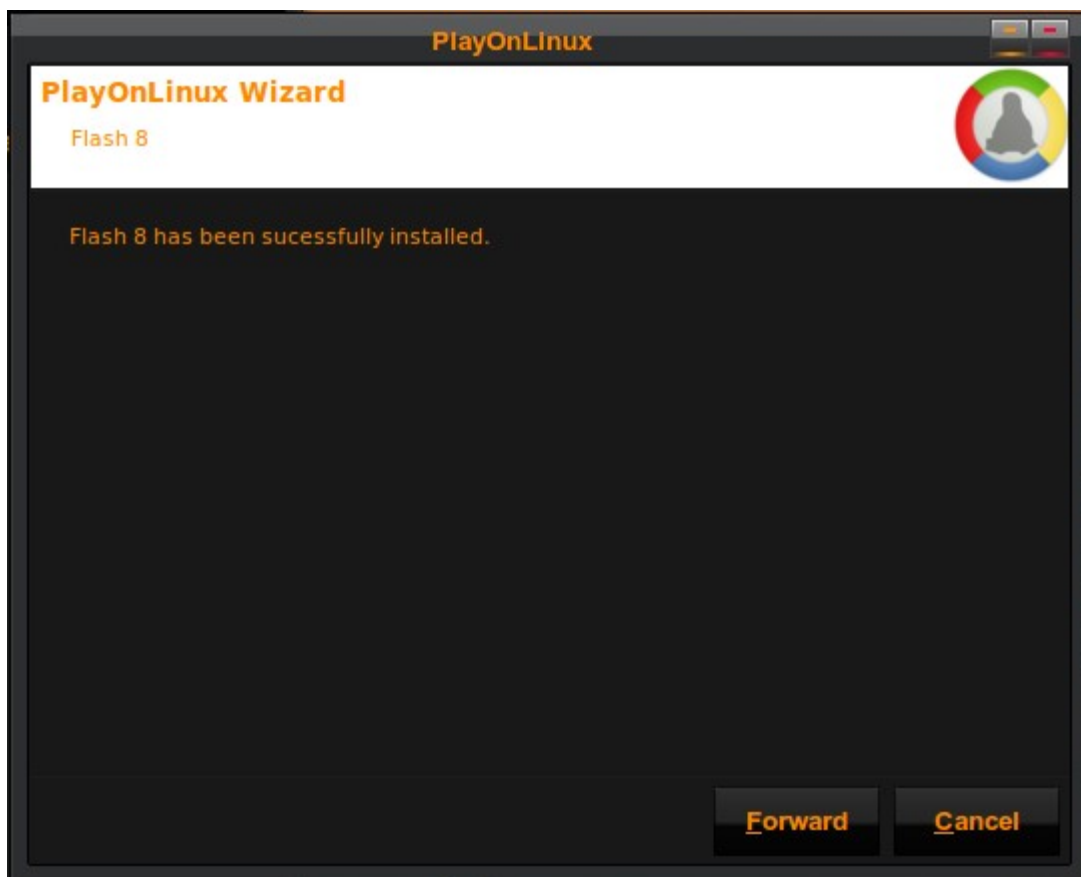
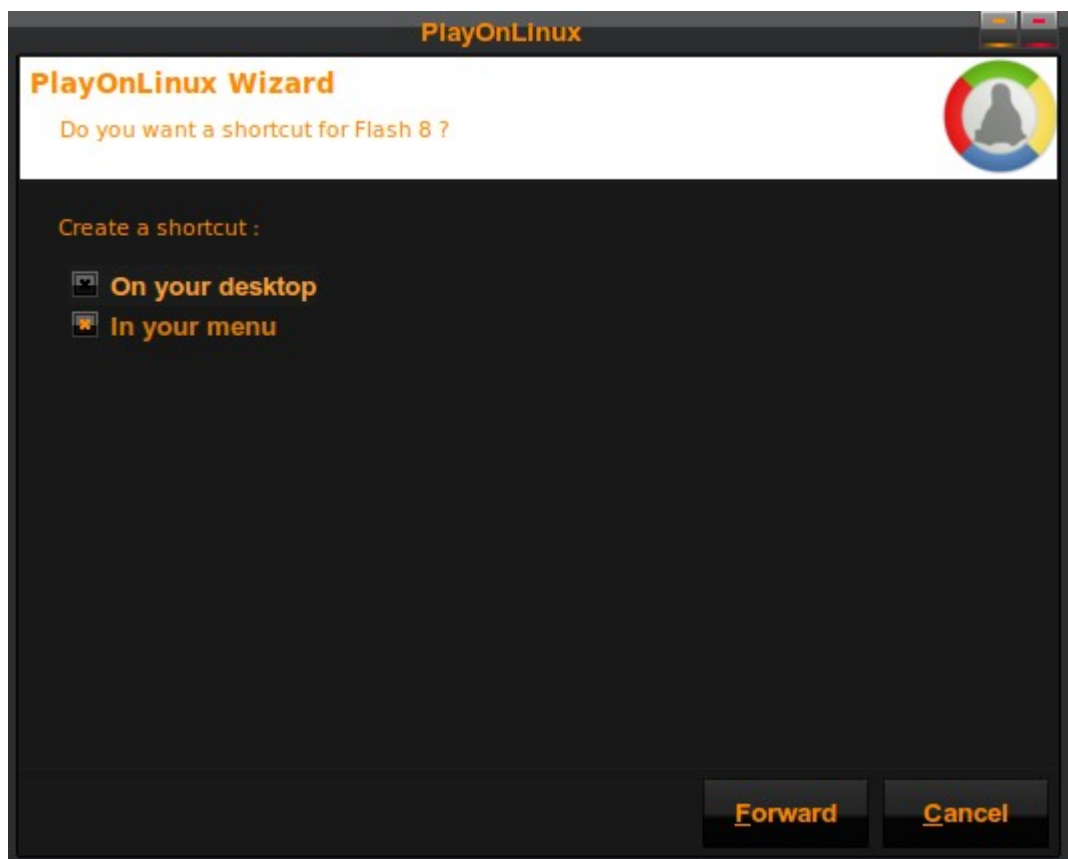
Forward

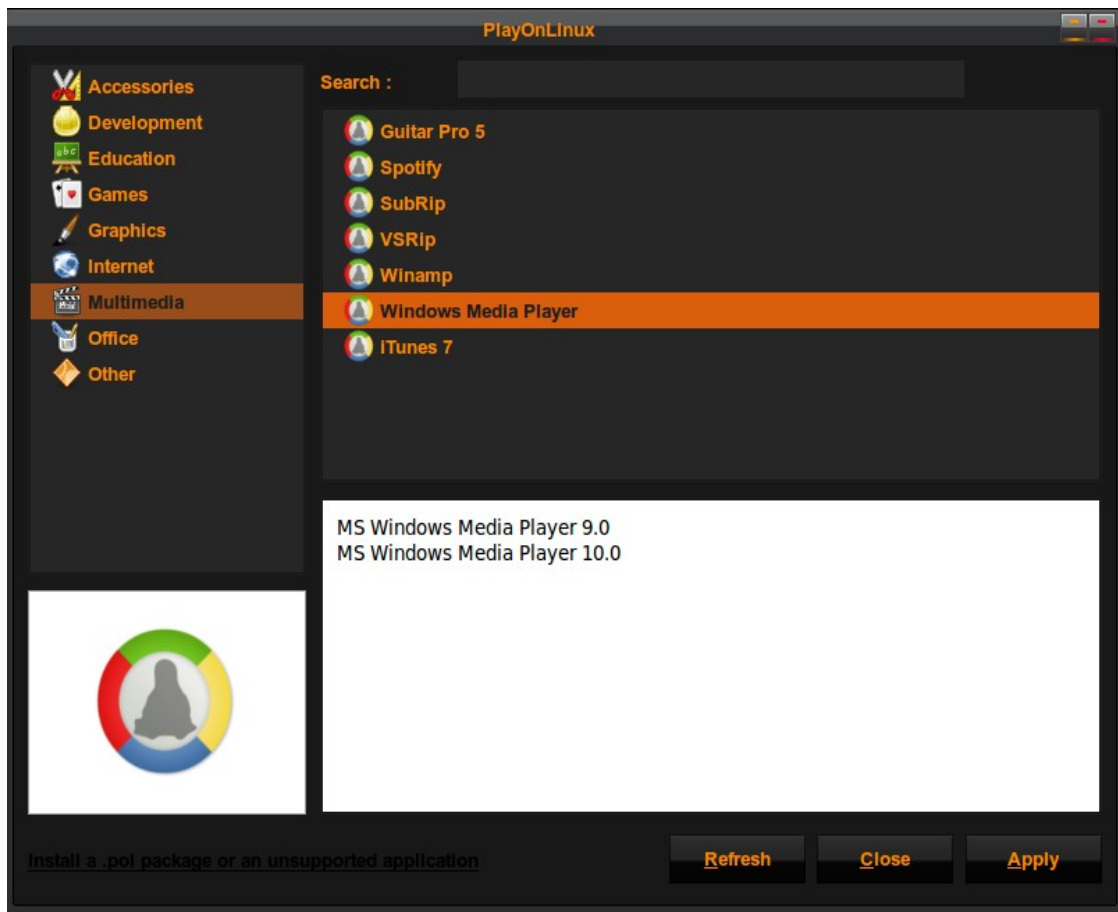
Cancel

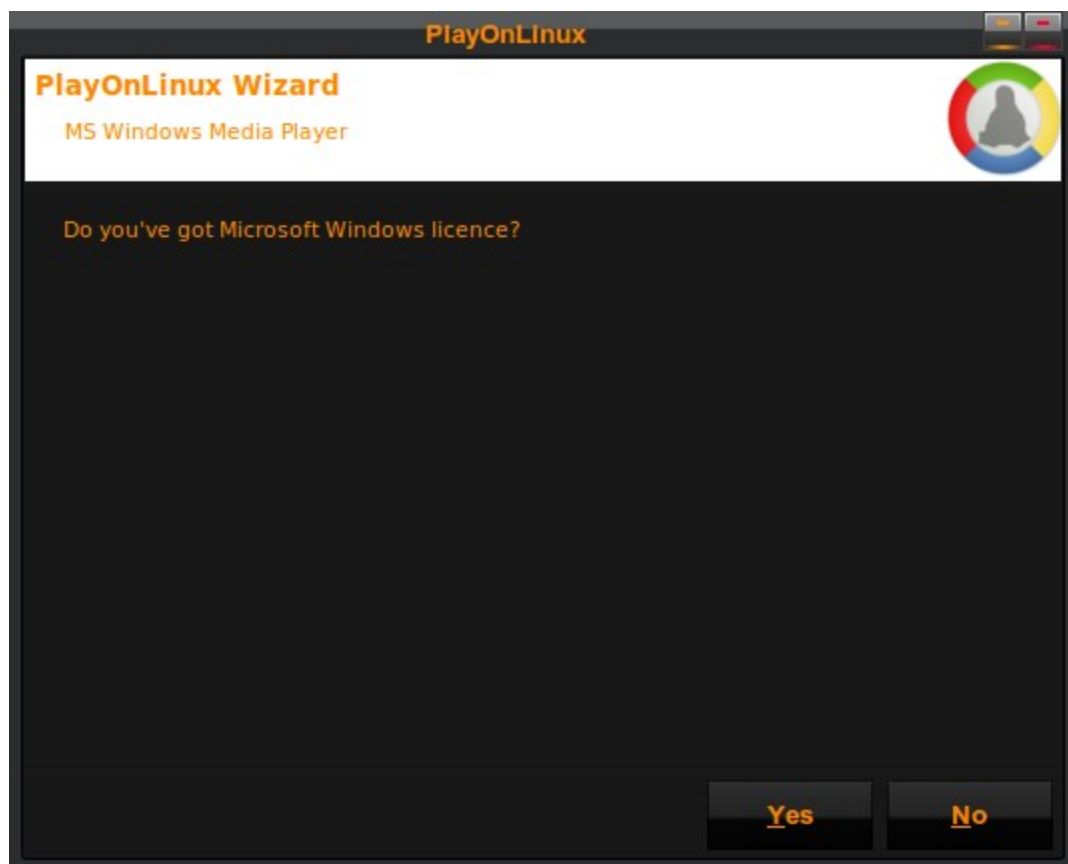
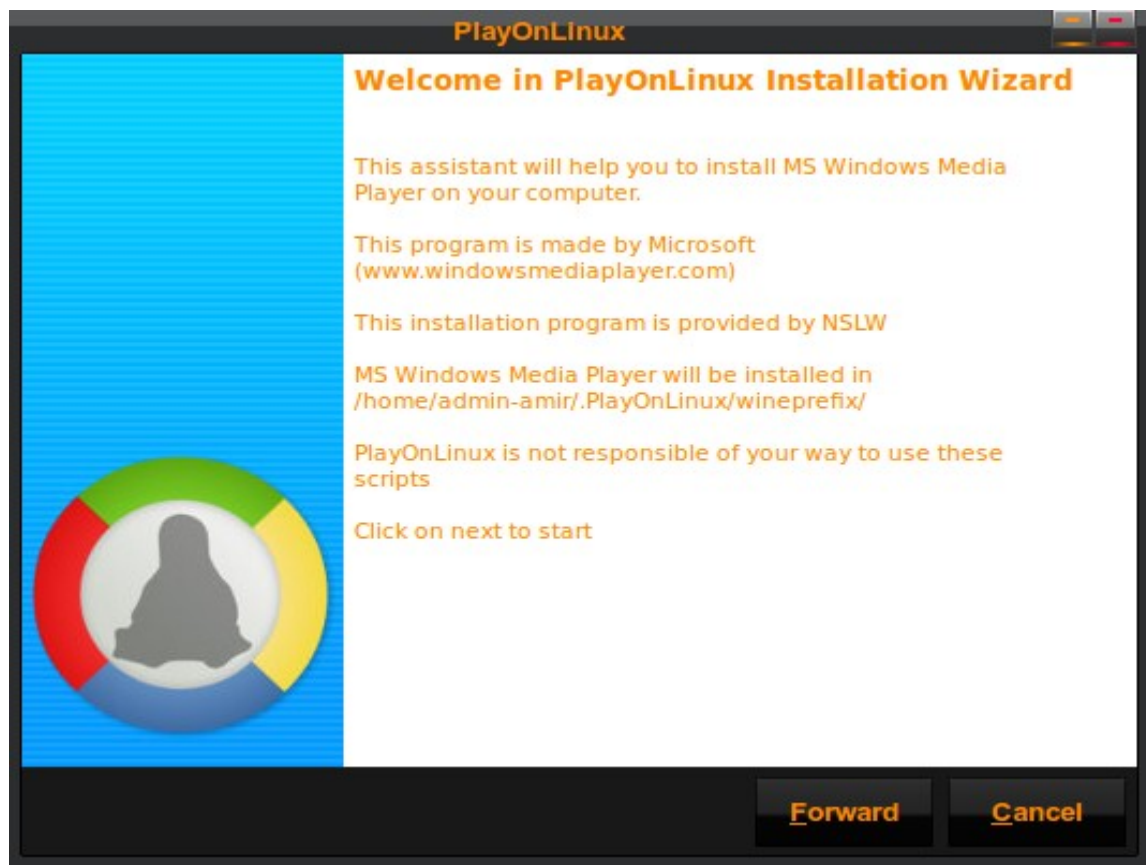












PlayOnLinux

PlayOnLinux Wizard

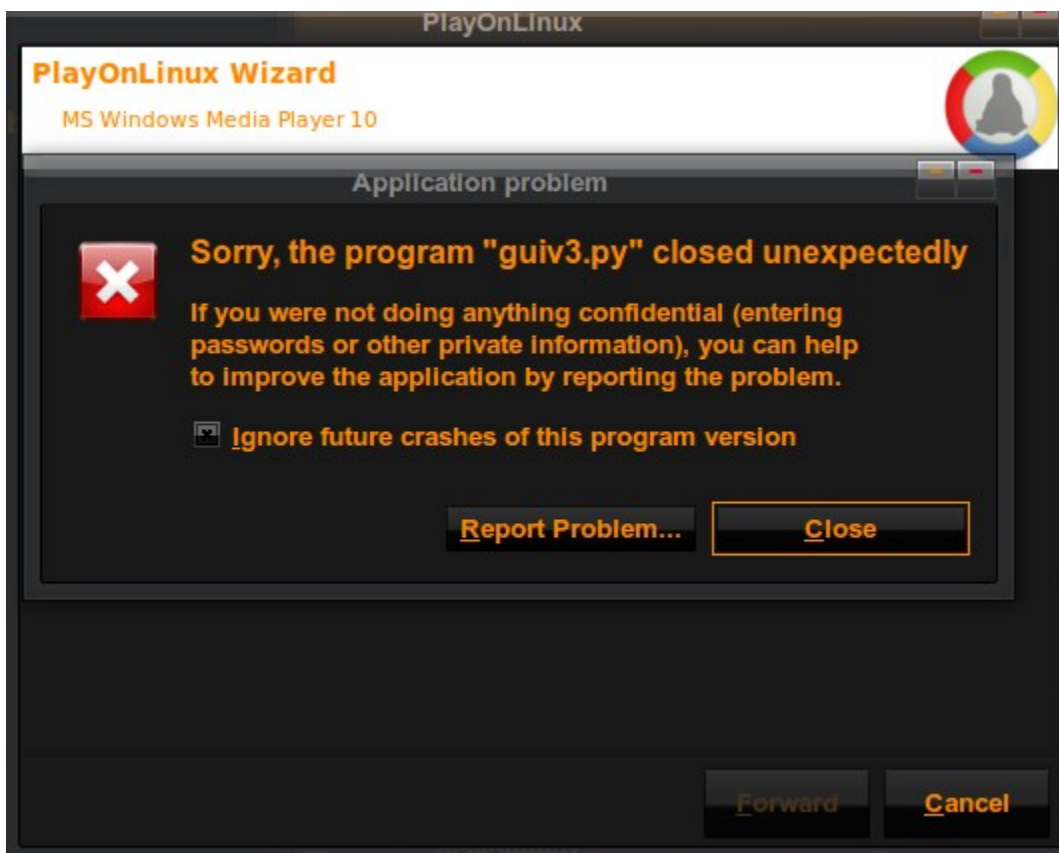
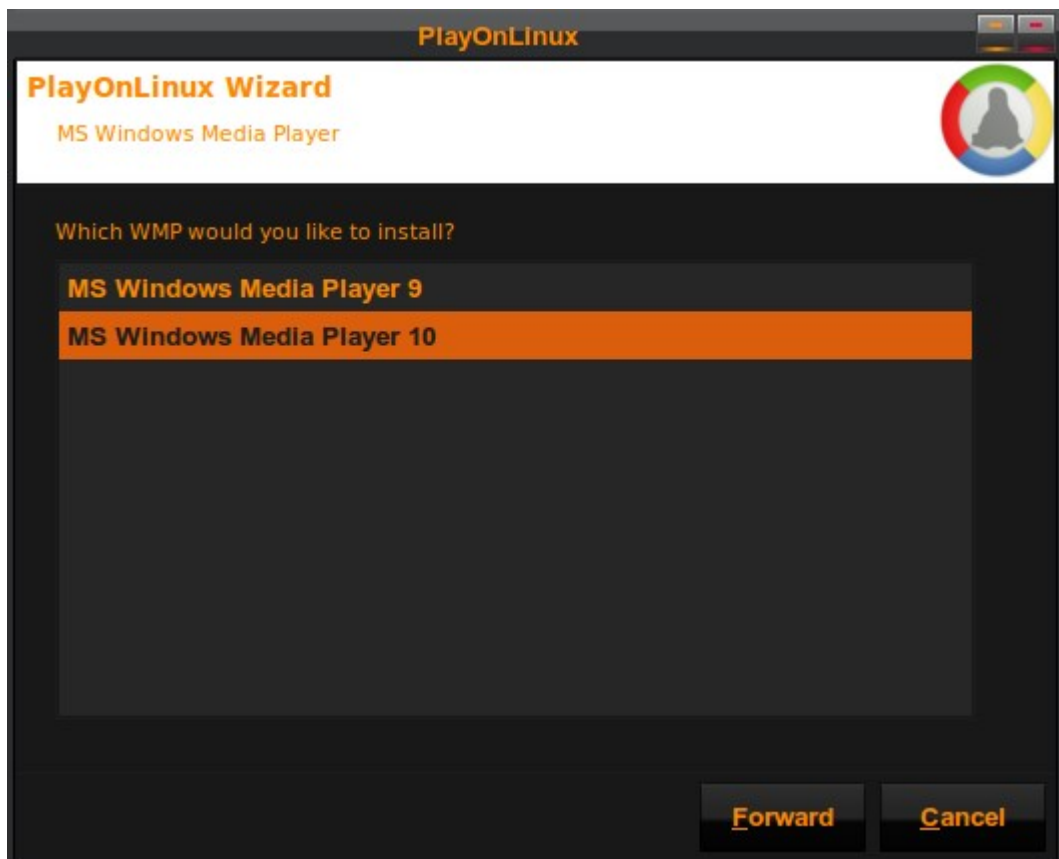
Note about icon

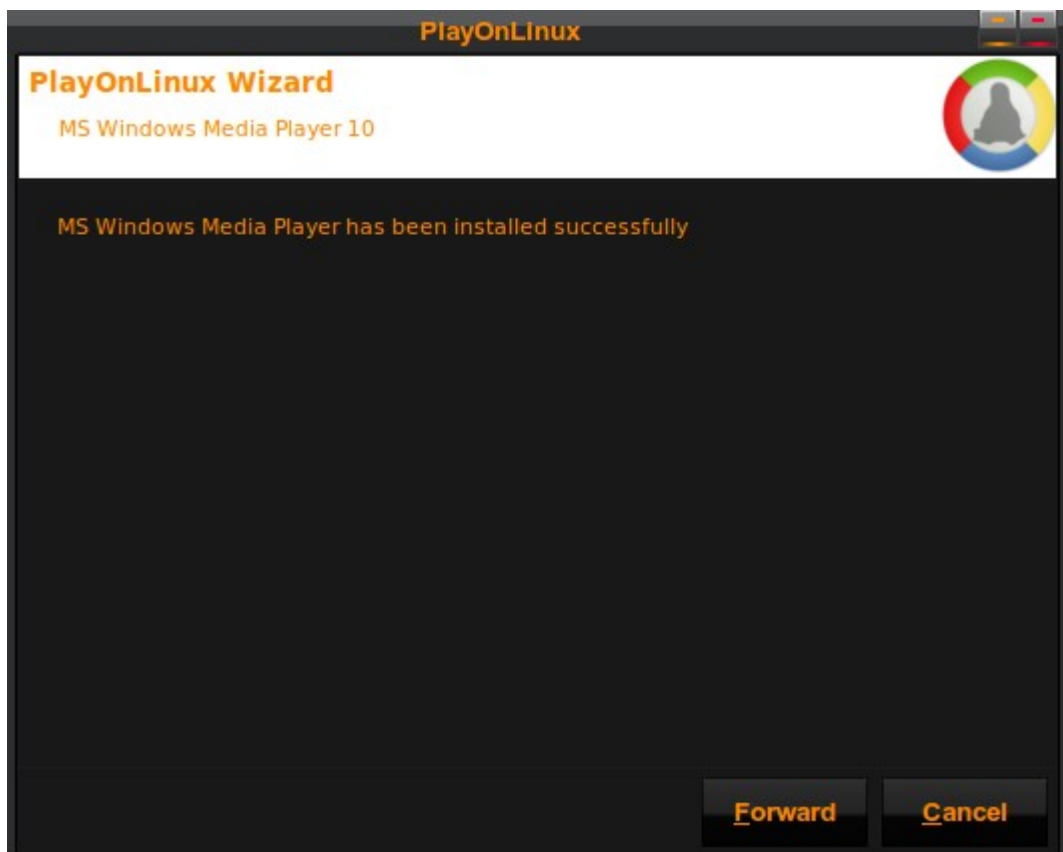
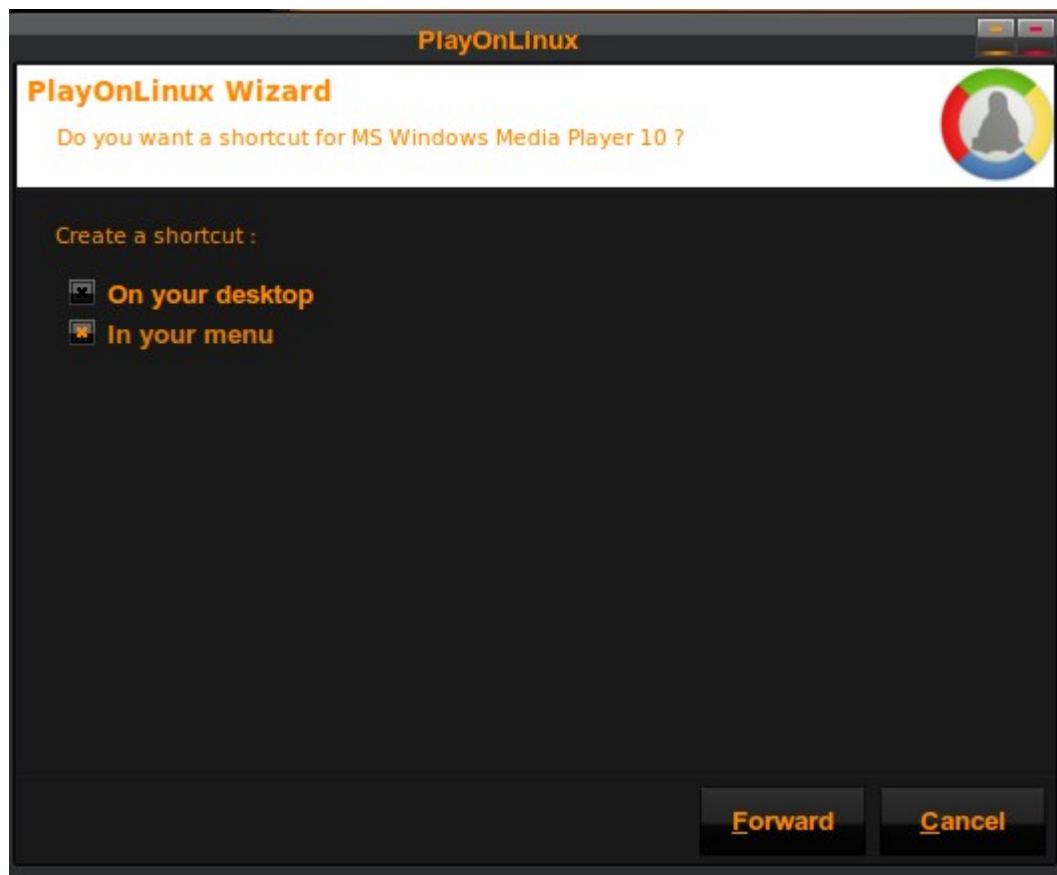


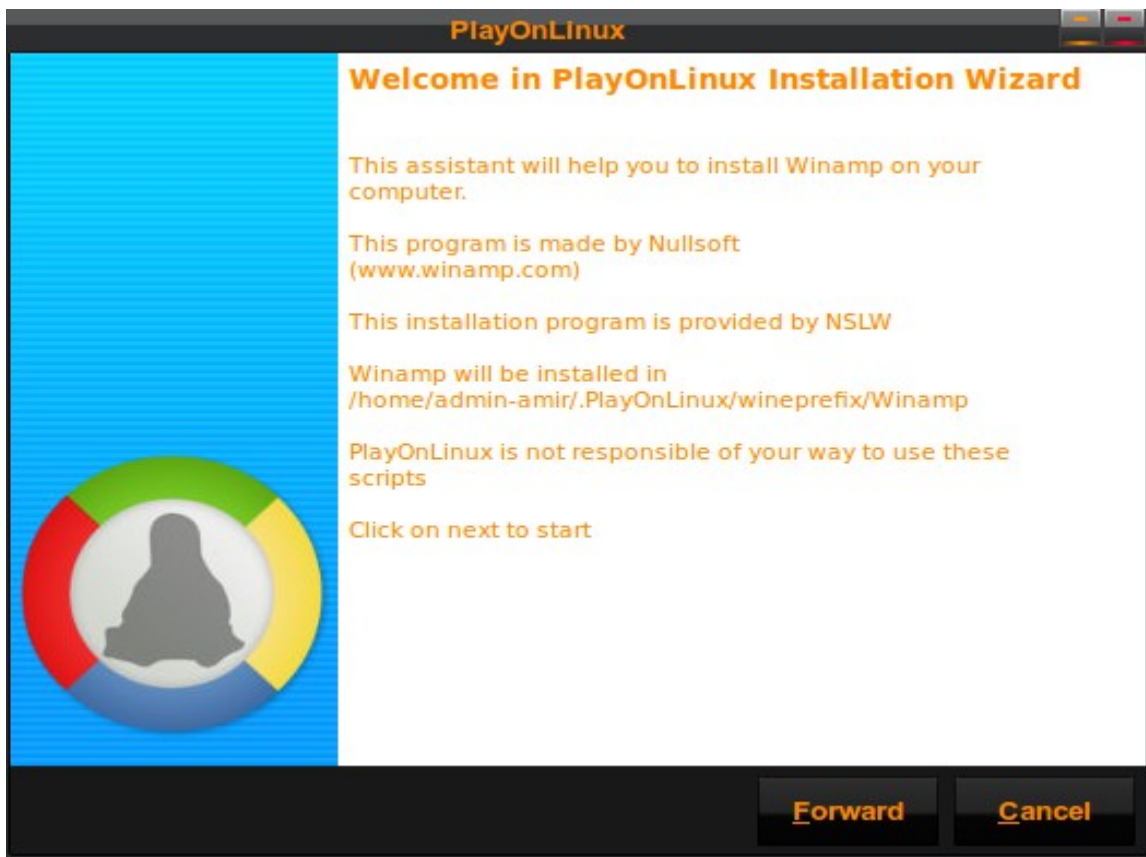
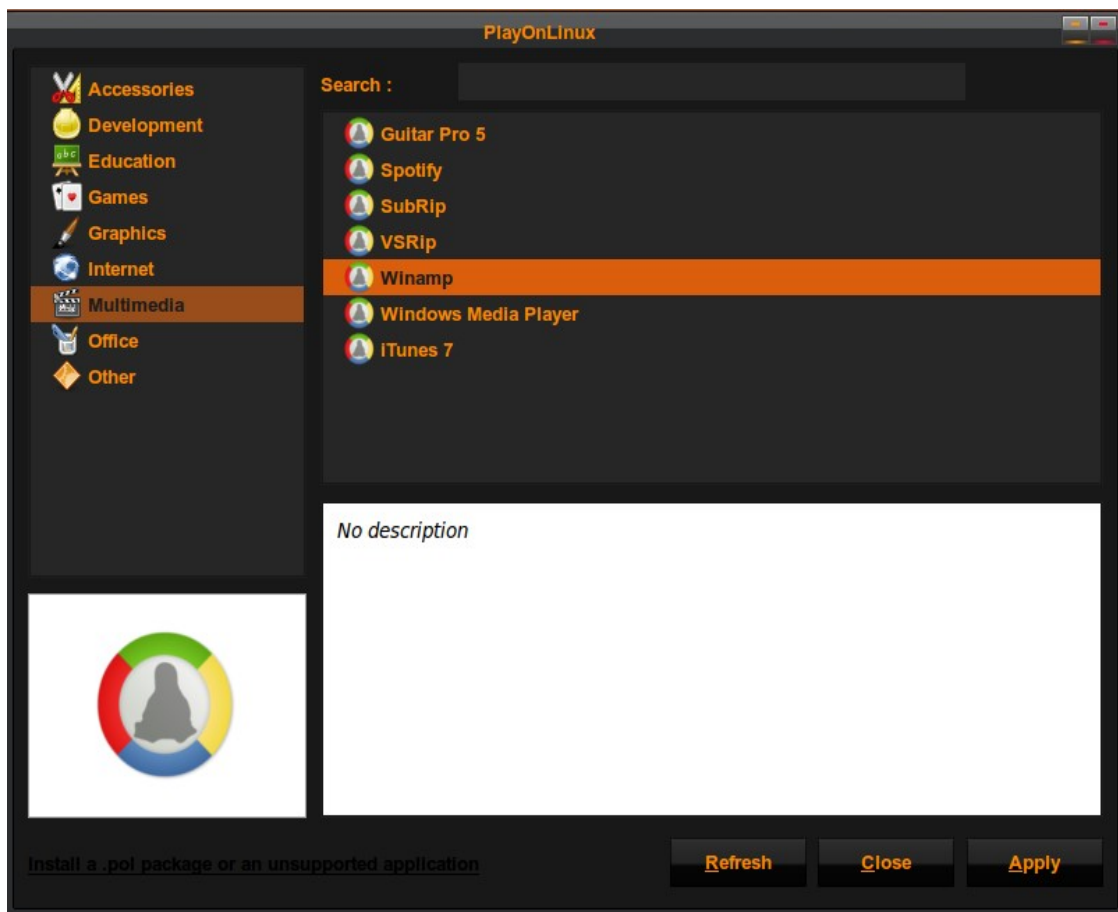
Please install icoutils
if you want to have nice icon for WMP in PlayOnLinux main menu

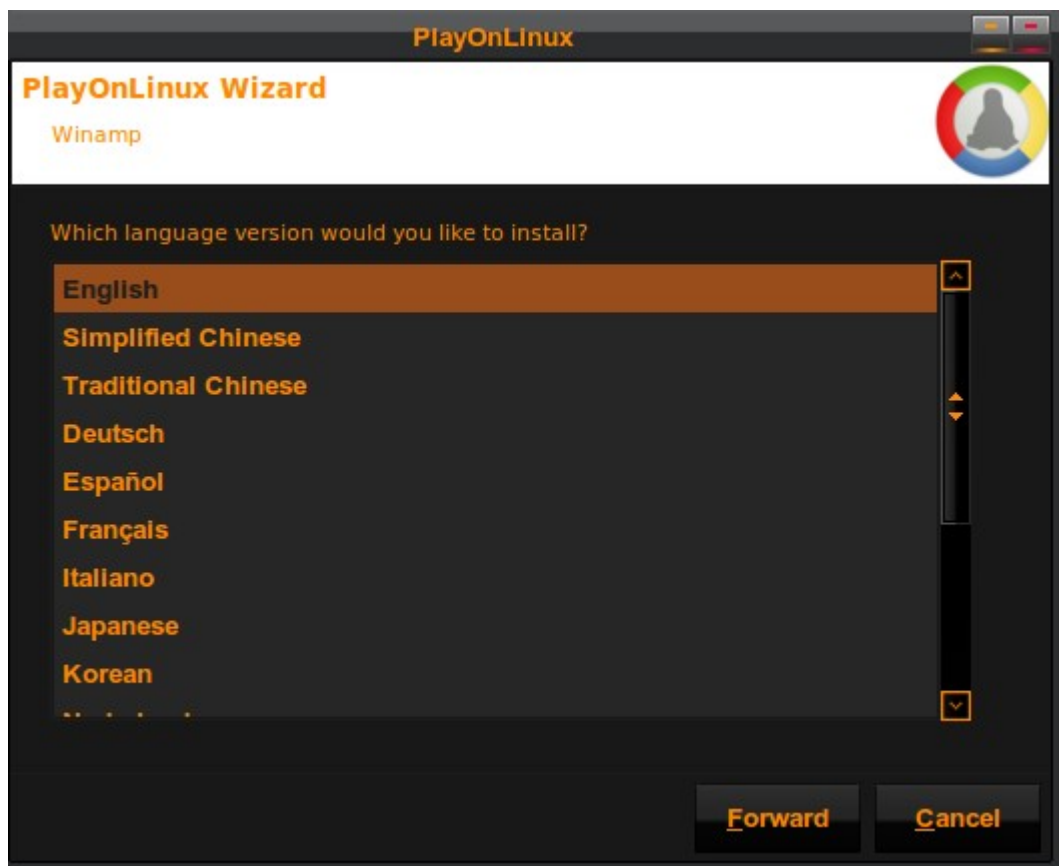
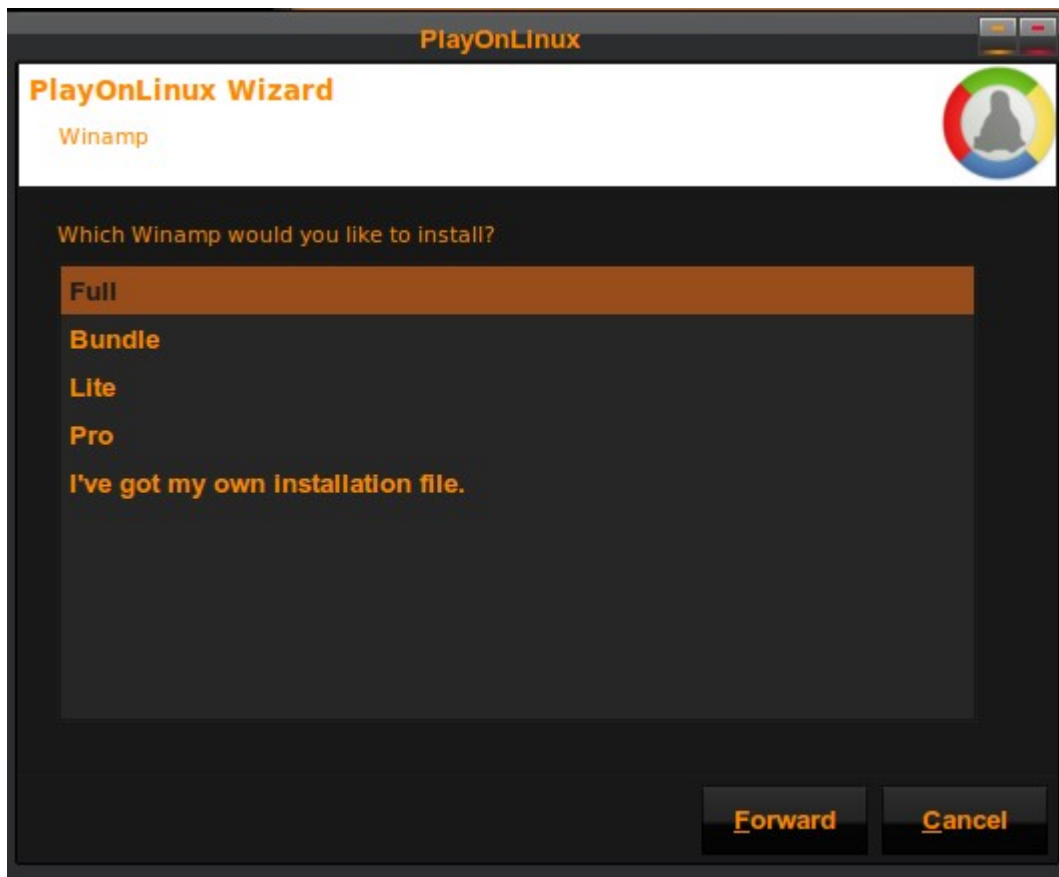
Forward

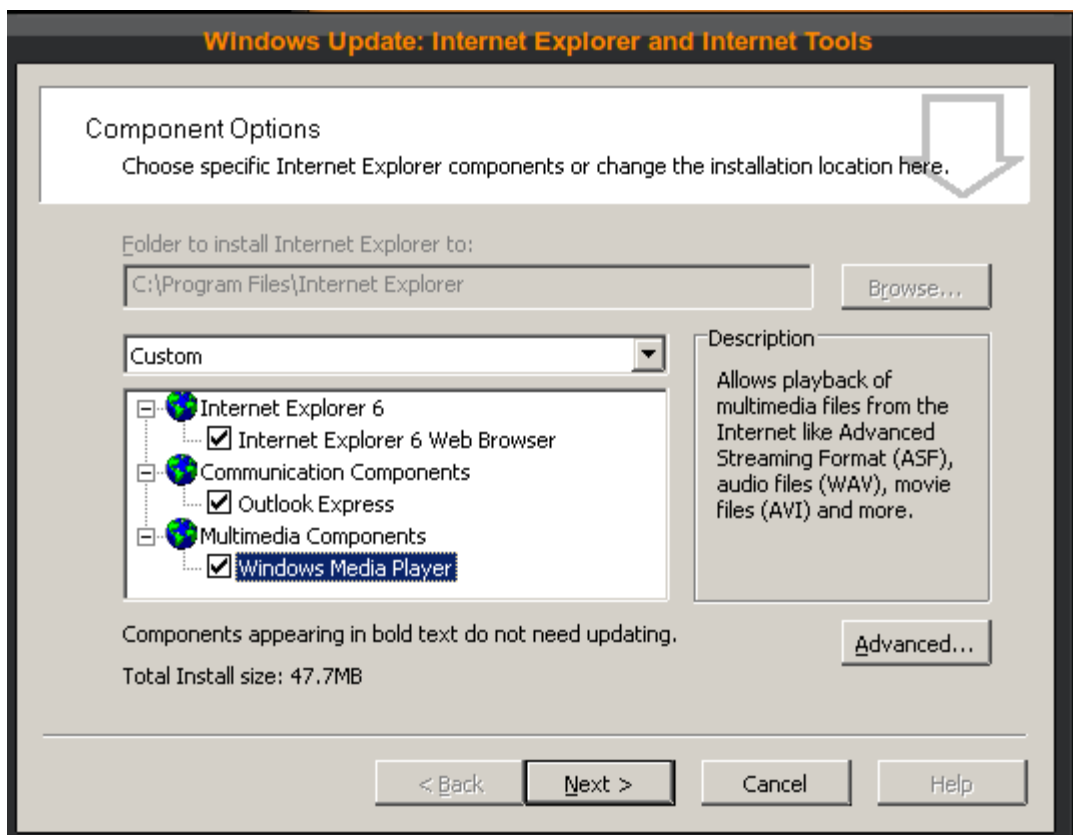
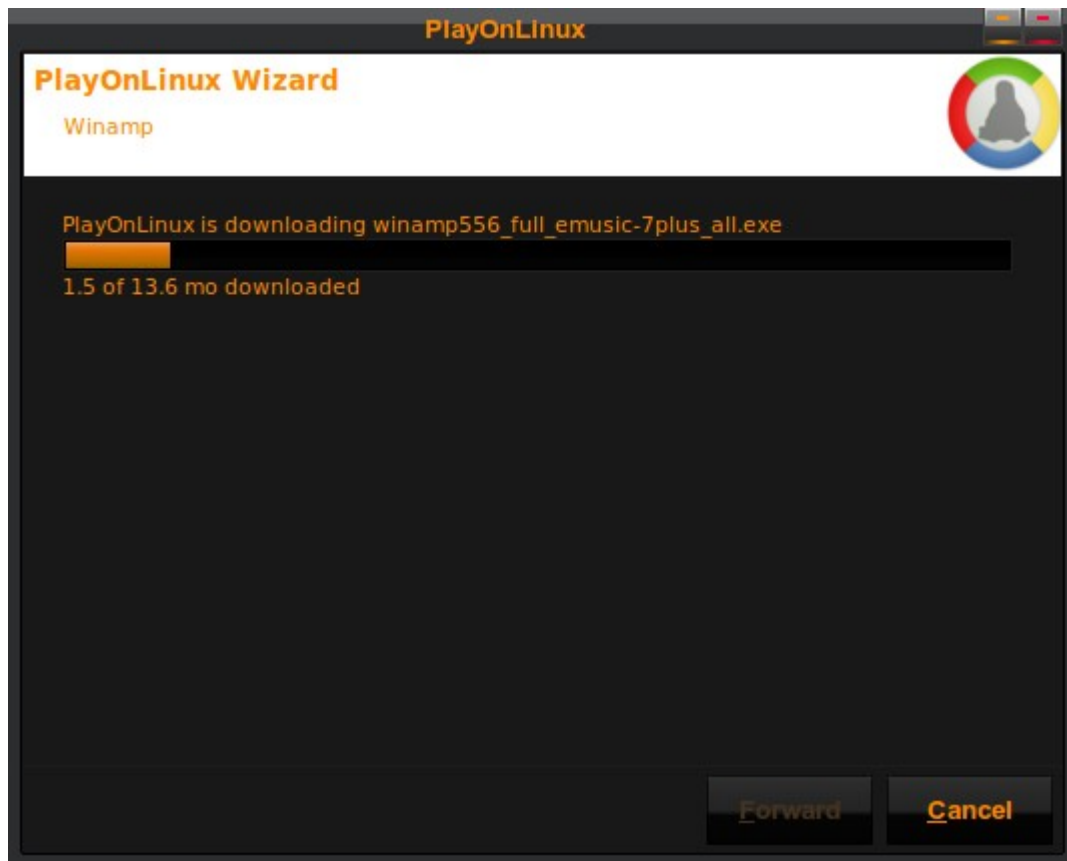
Cancel

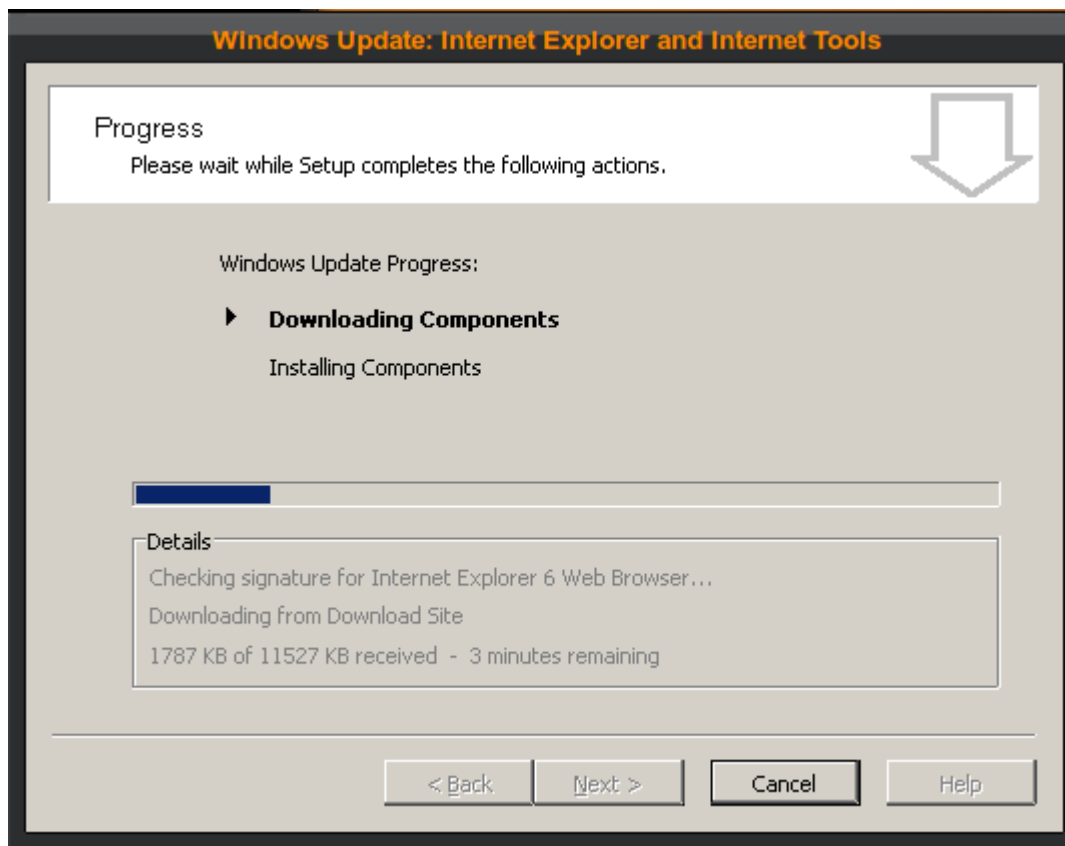
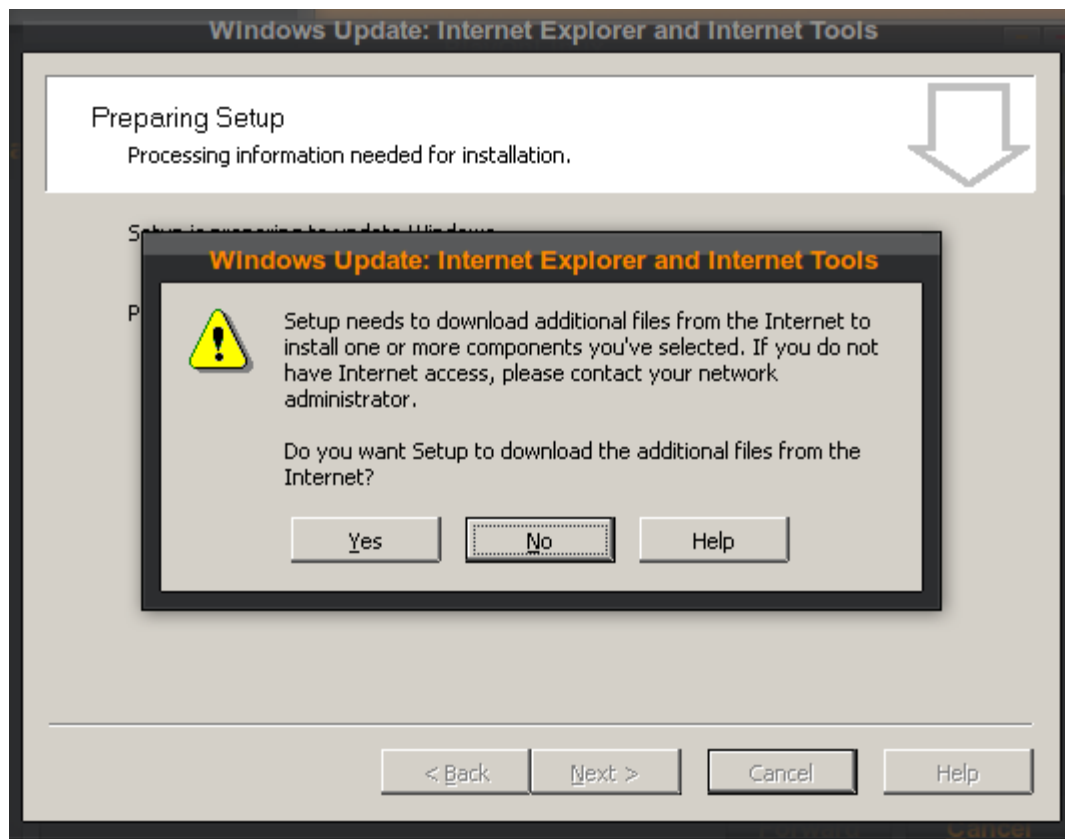


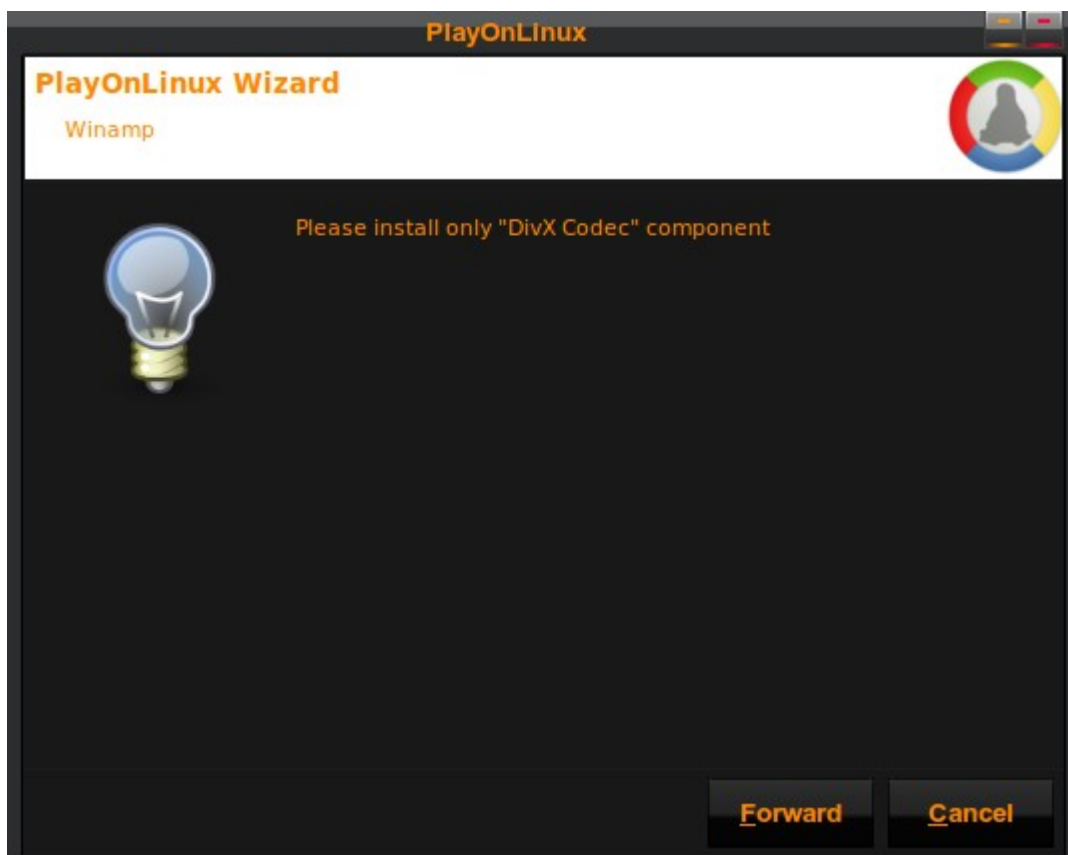
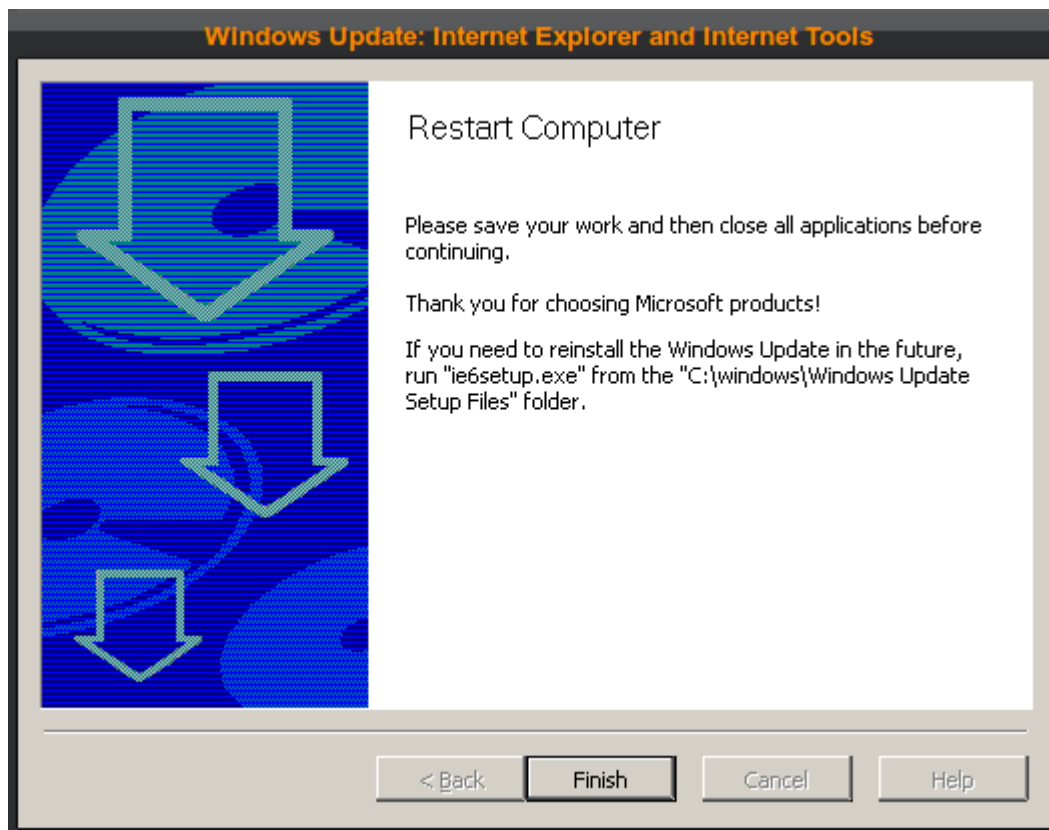


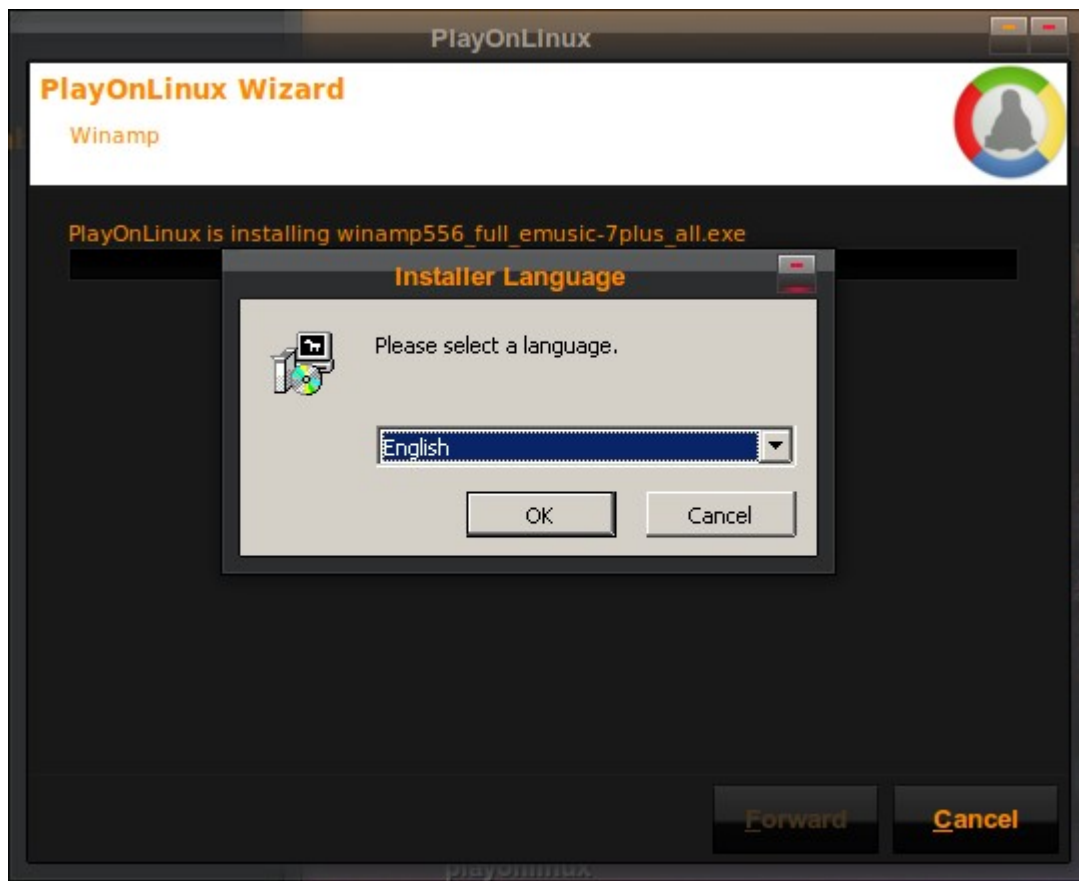


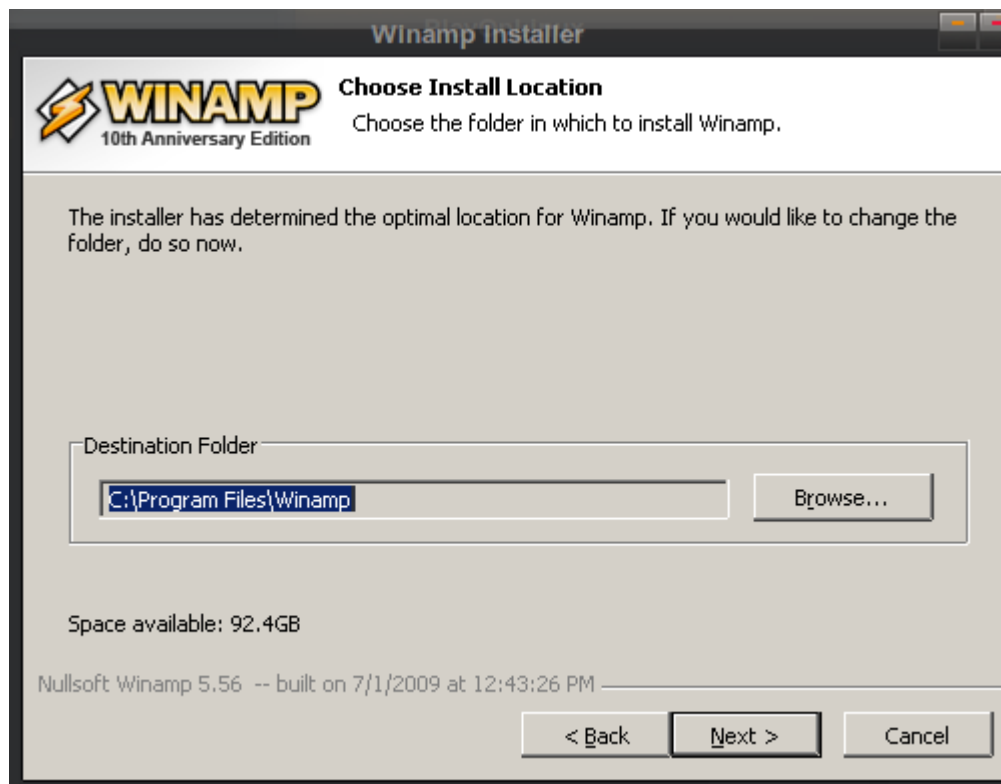
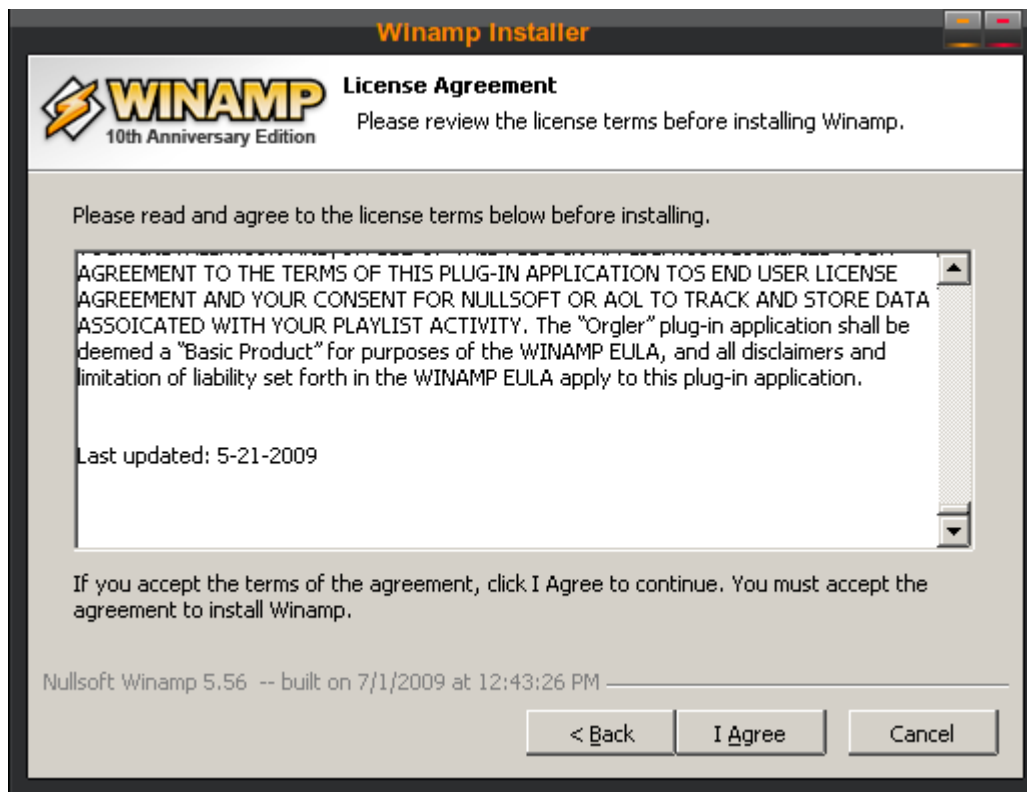


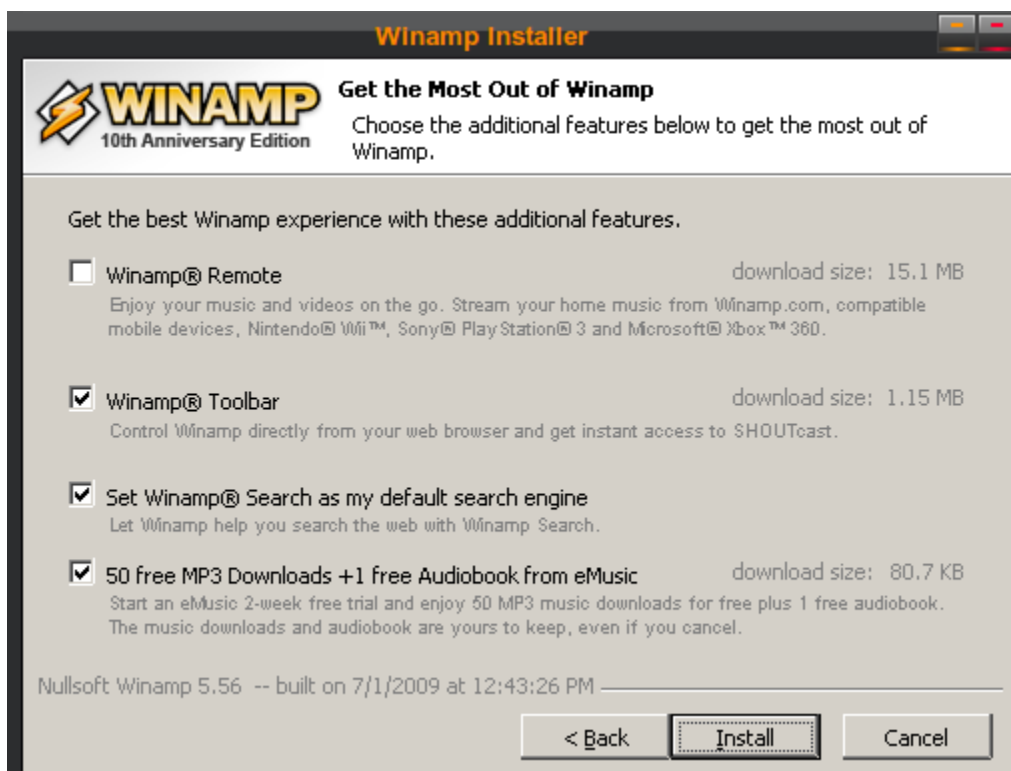
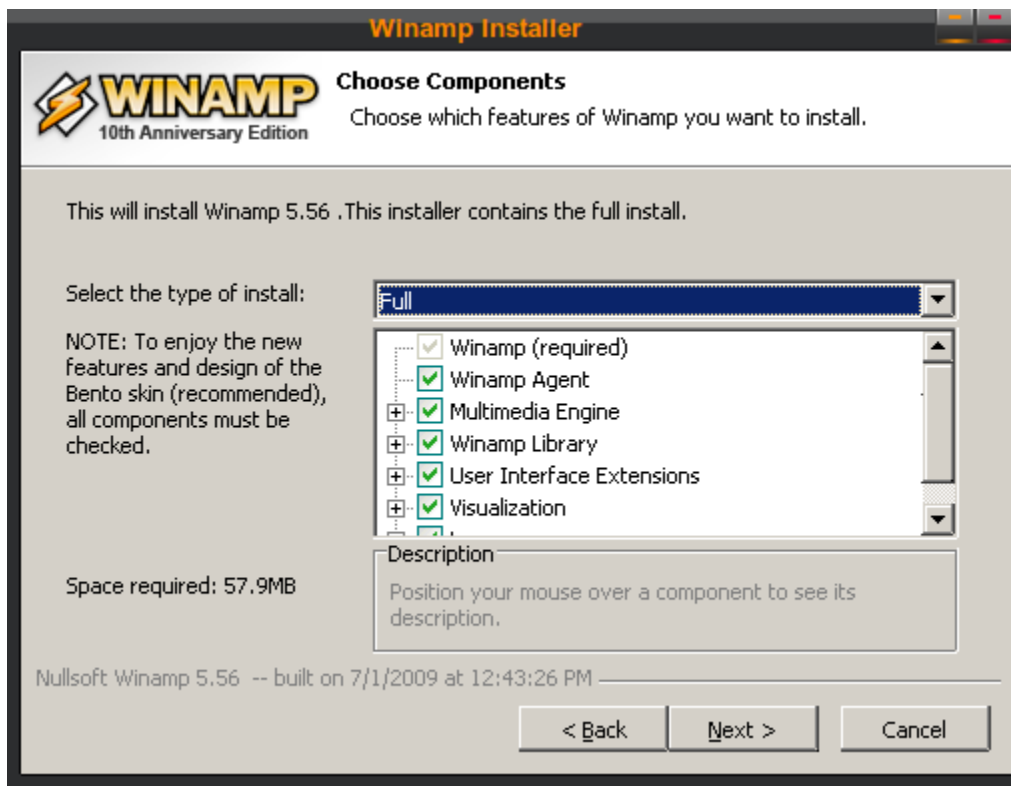


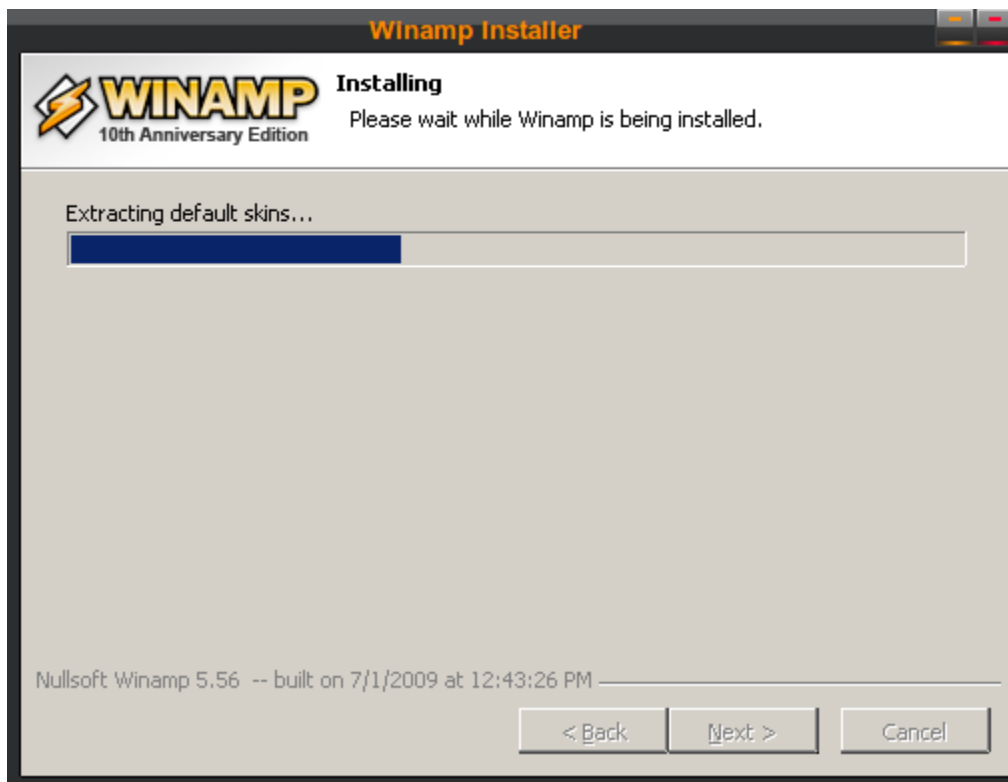


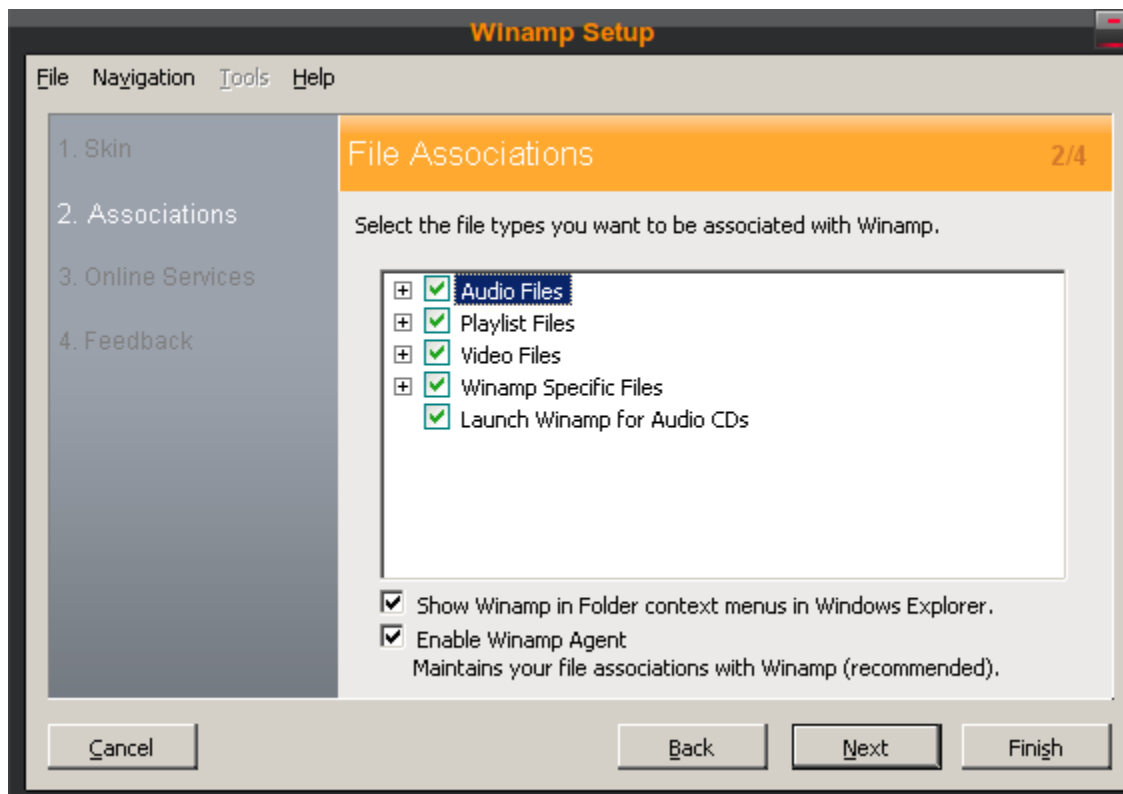
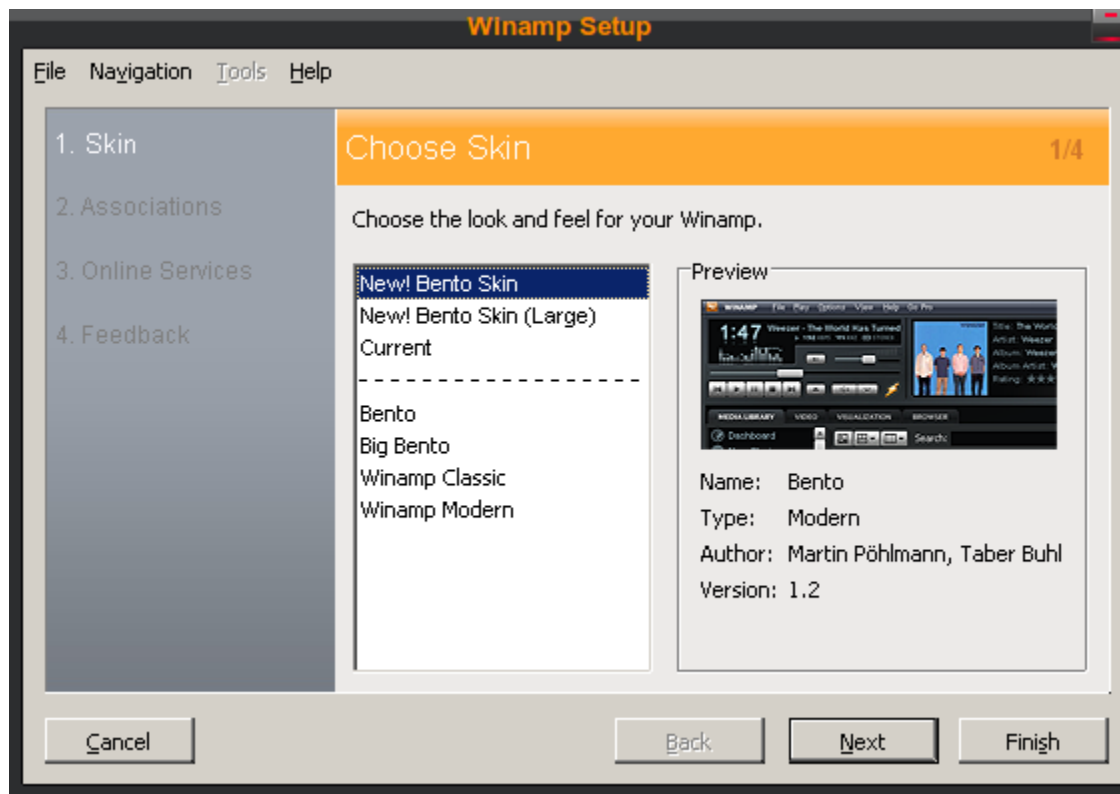


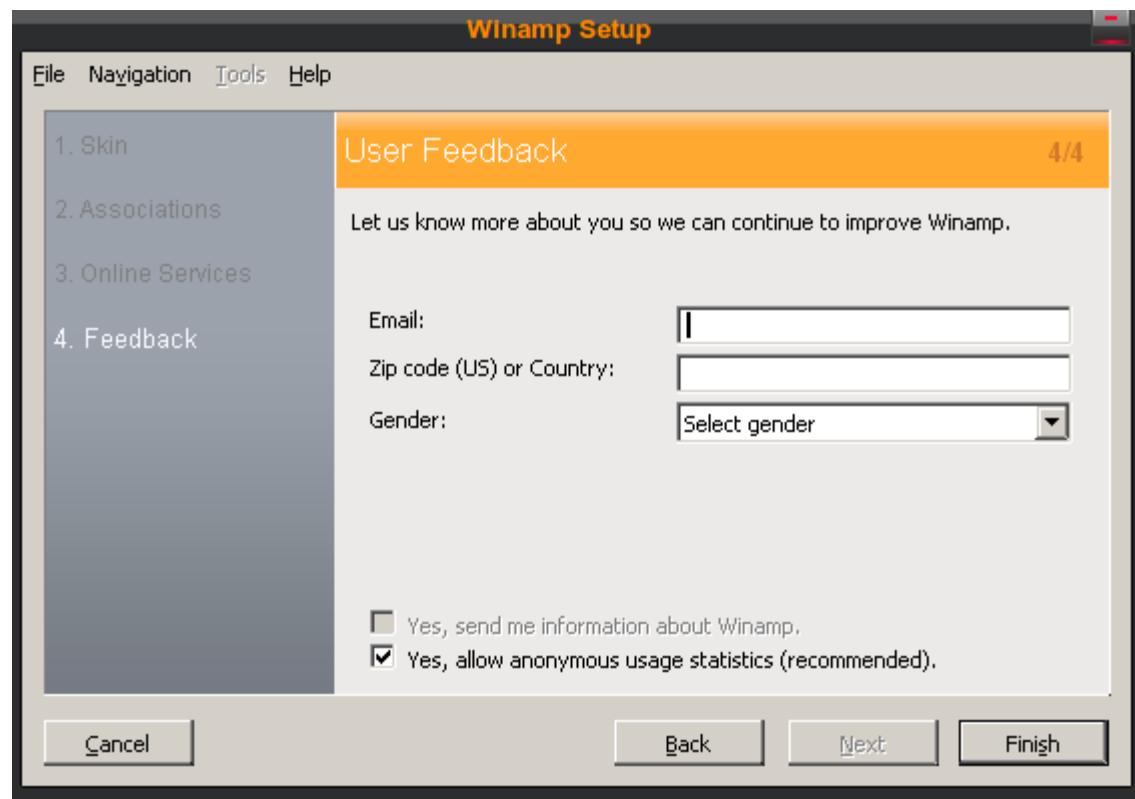
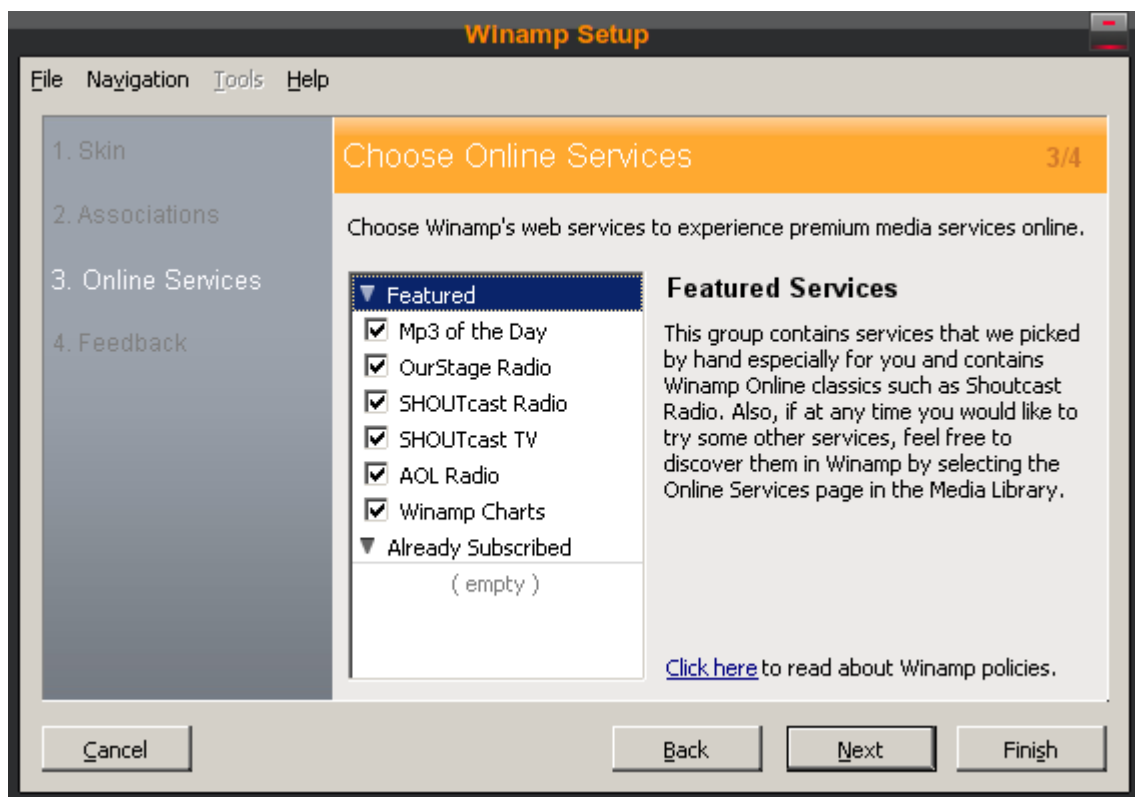


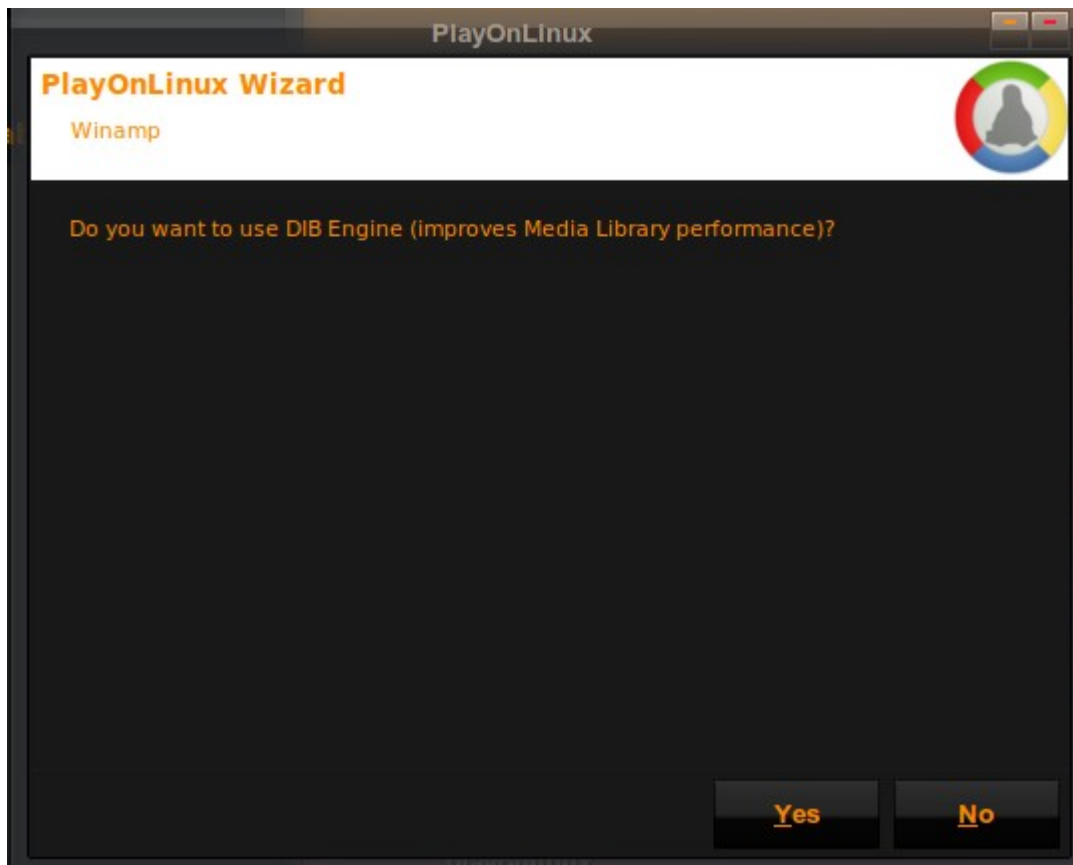
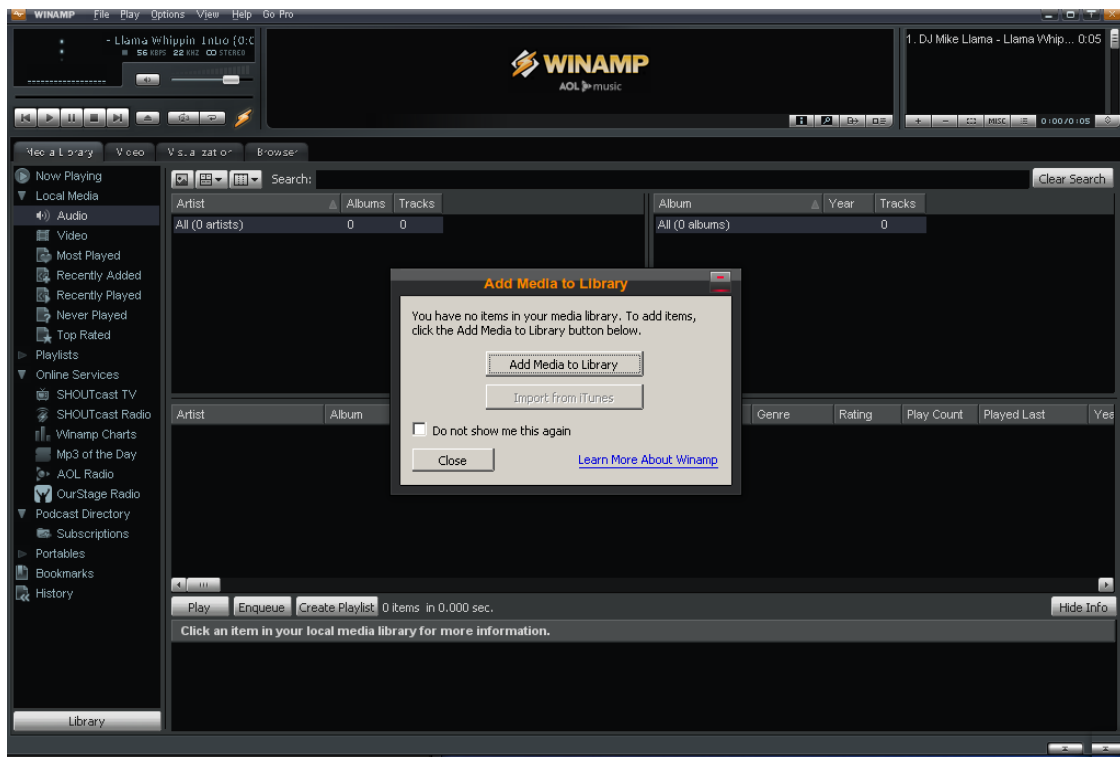


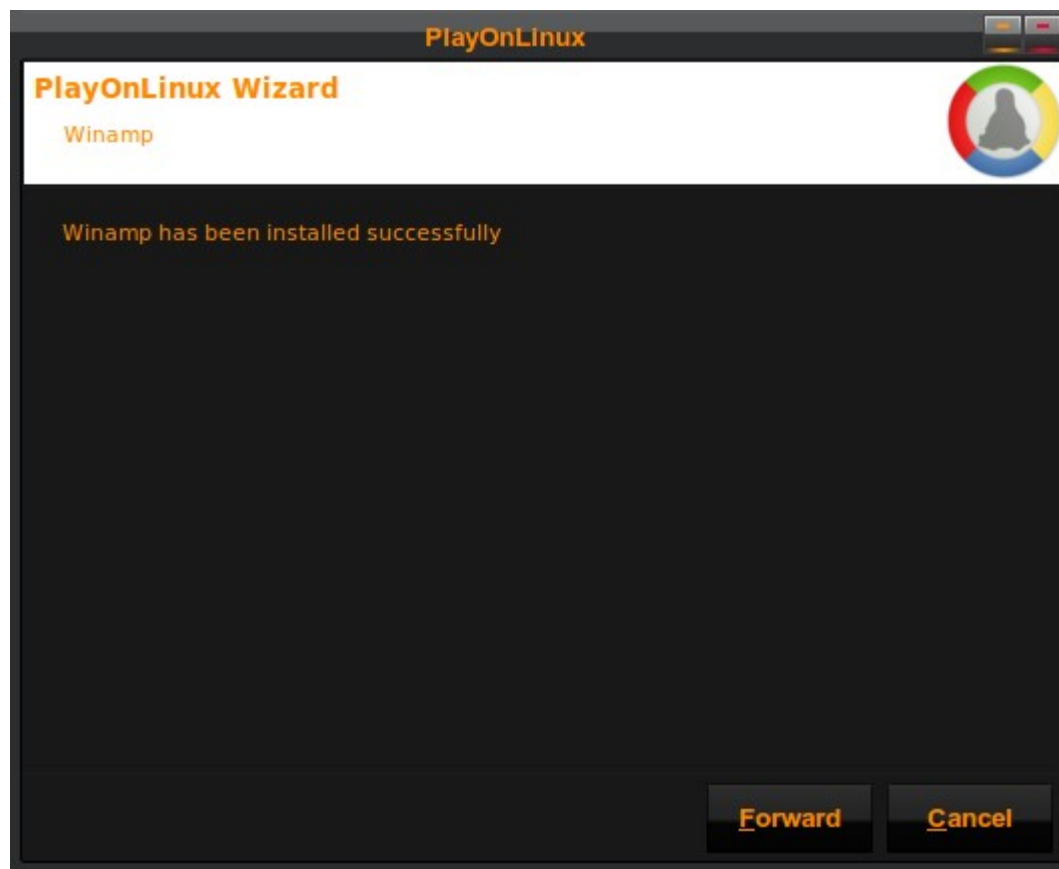
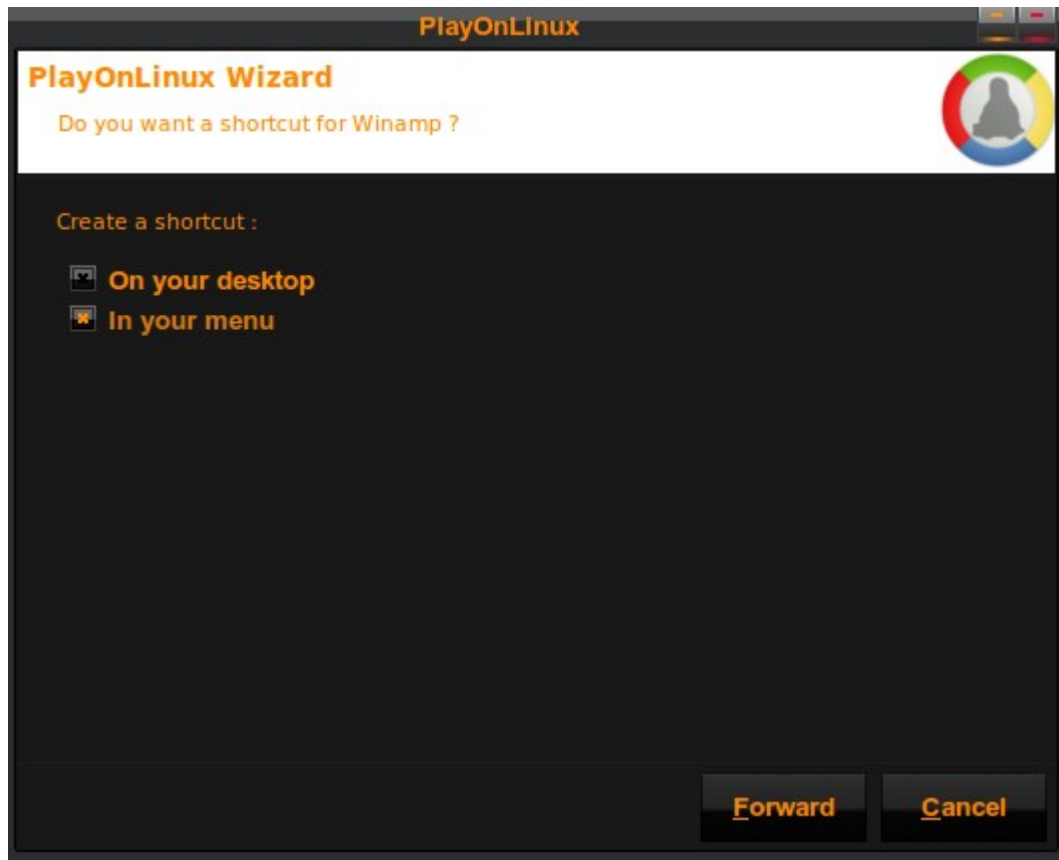


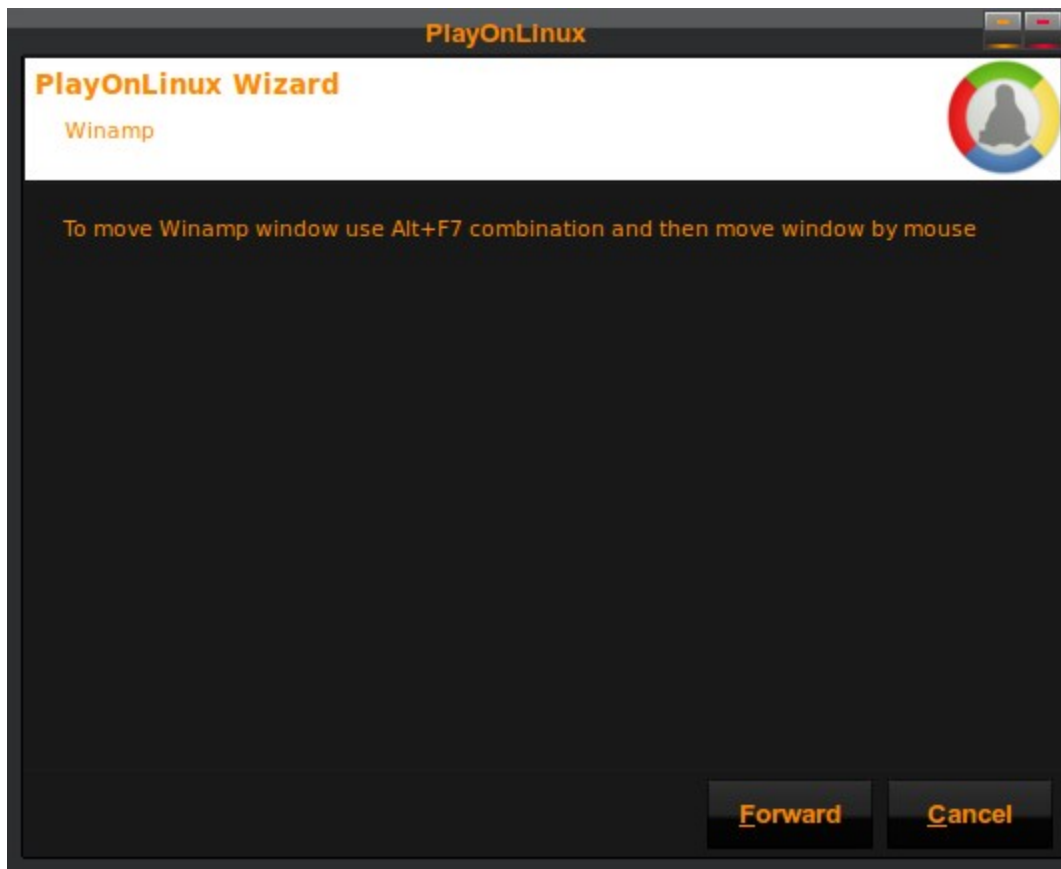


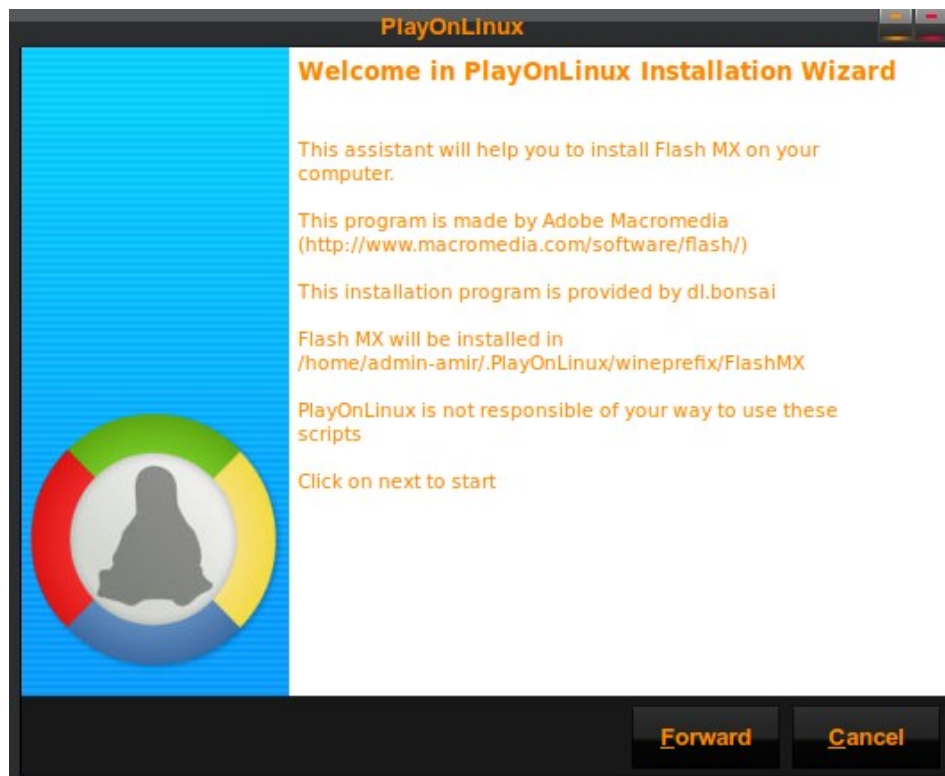
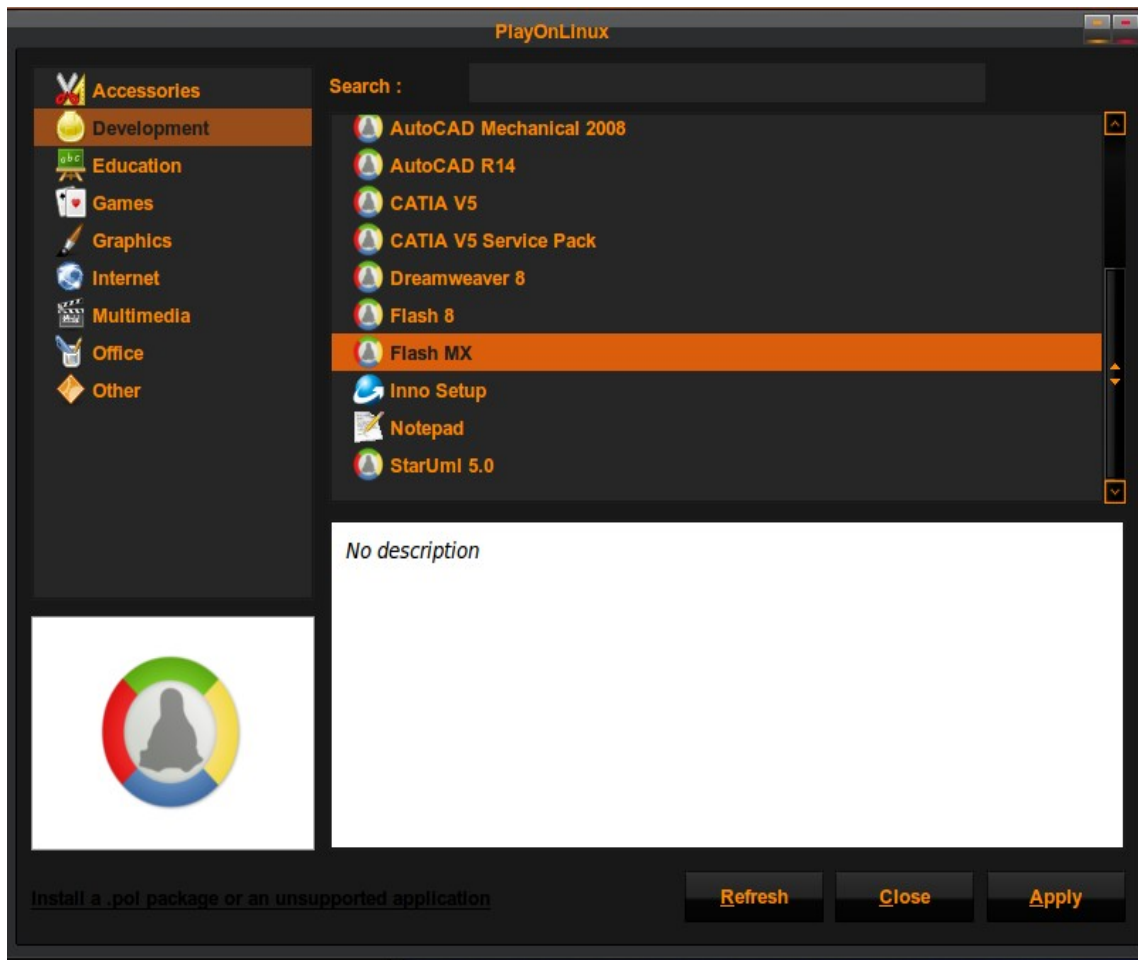


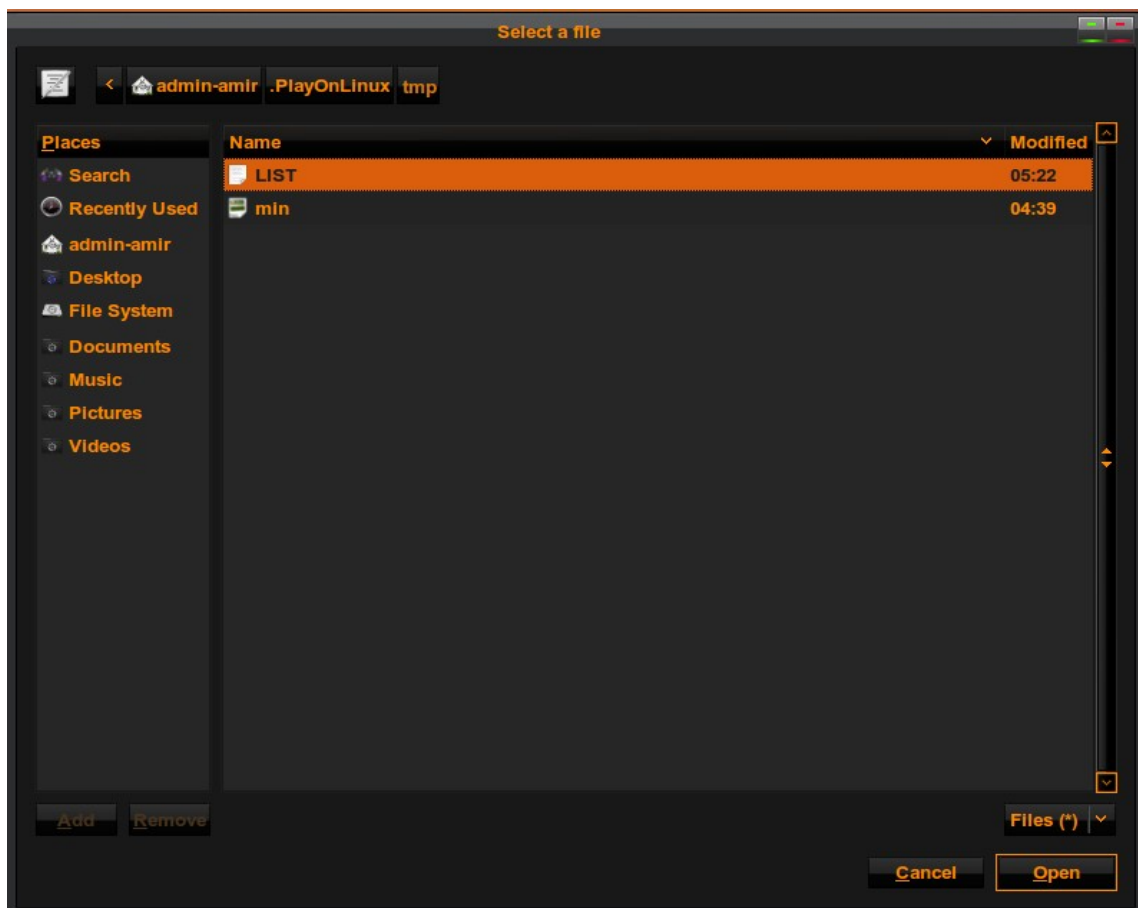
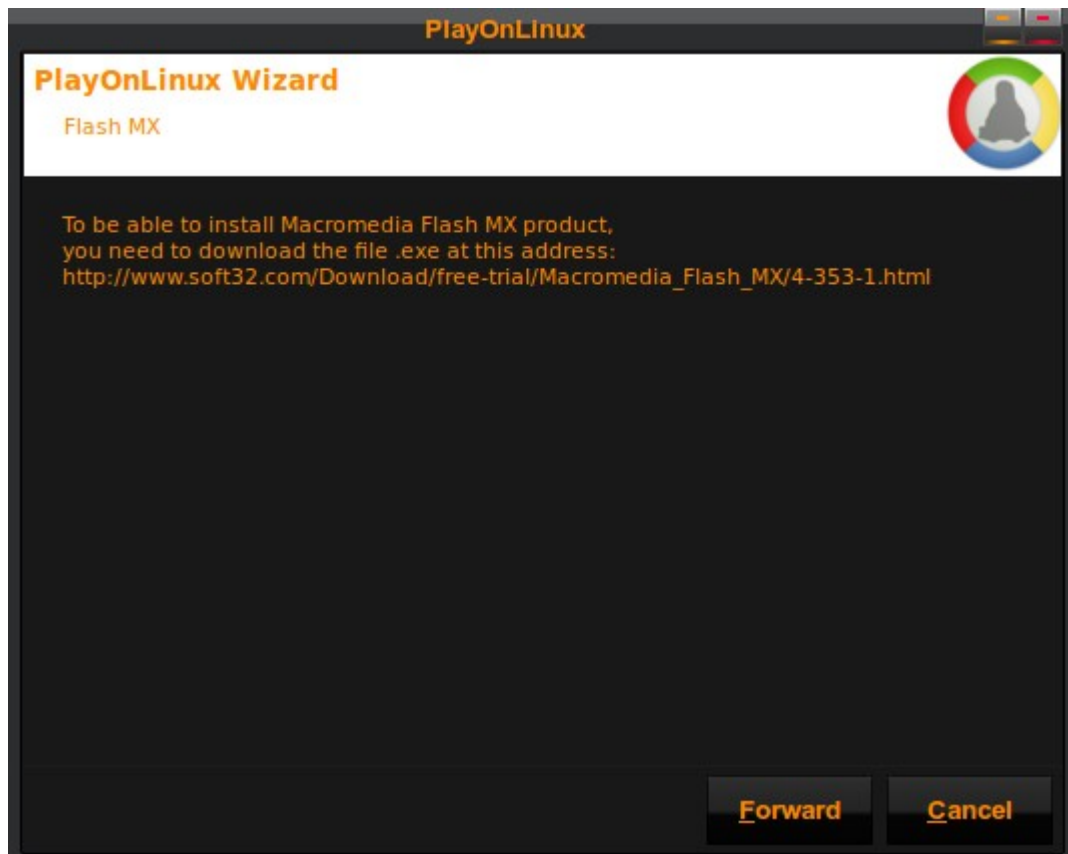


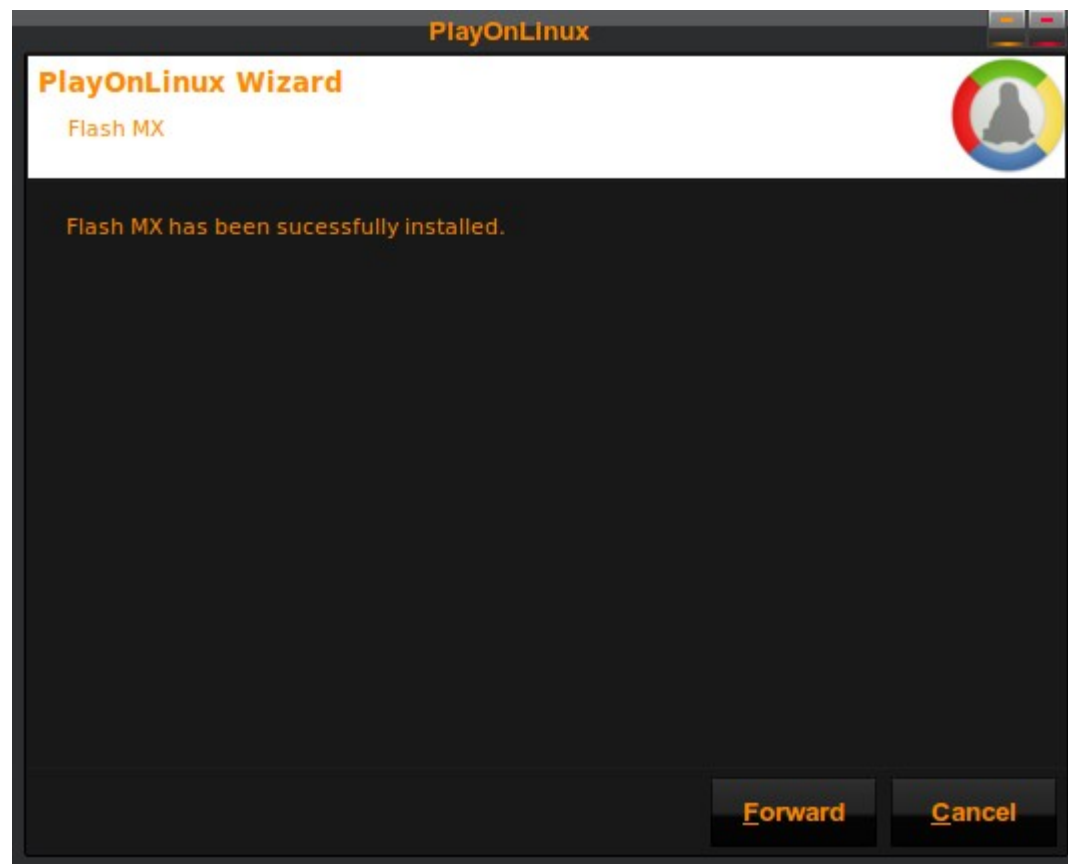
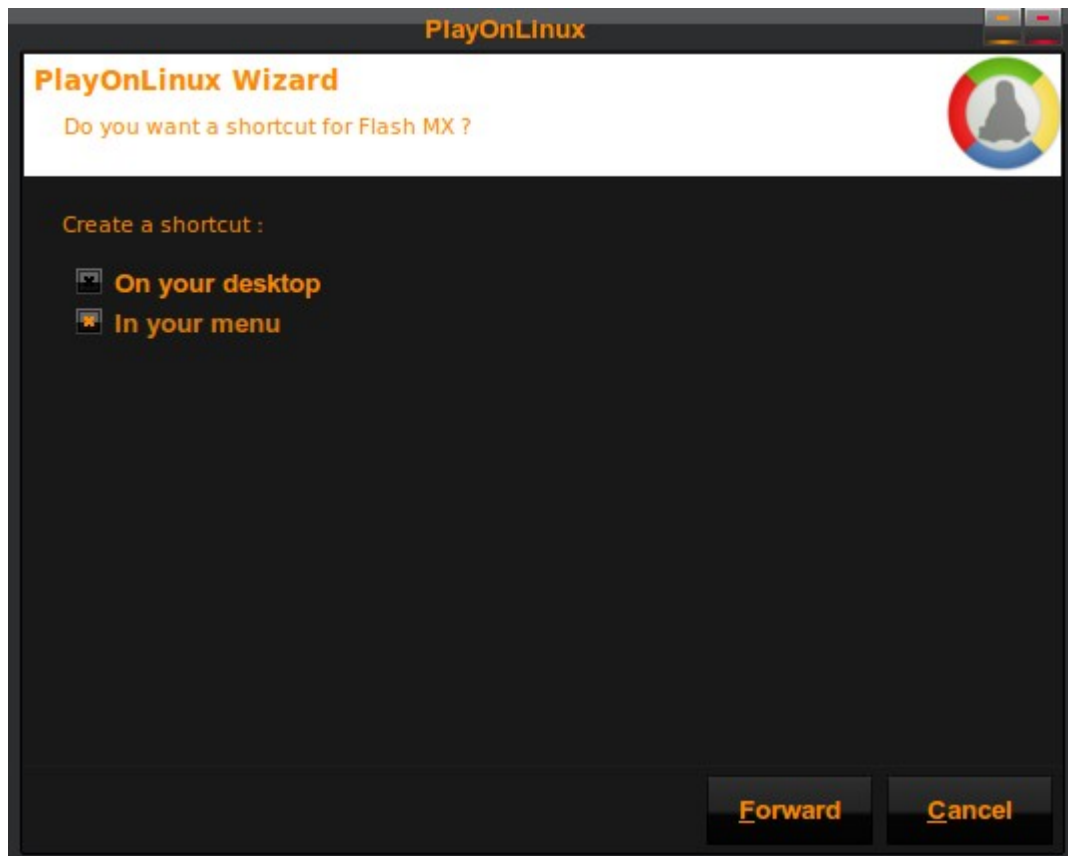


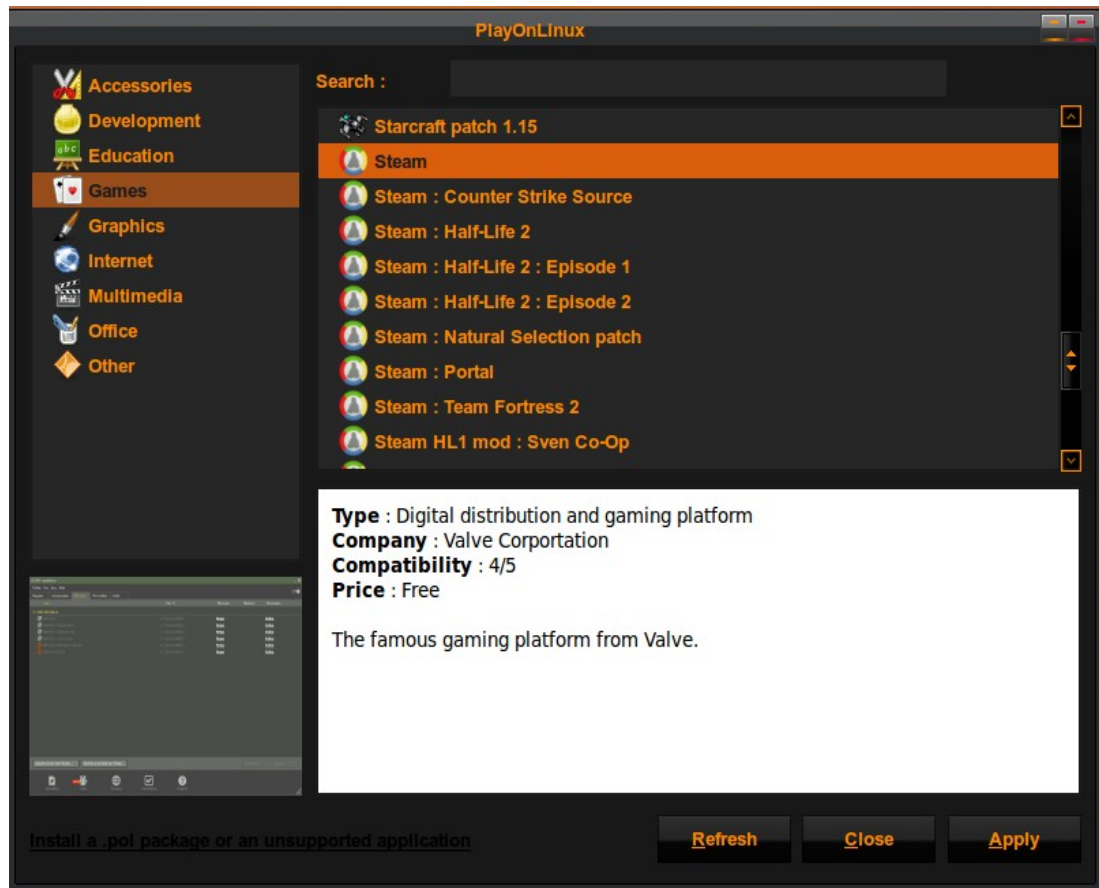
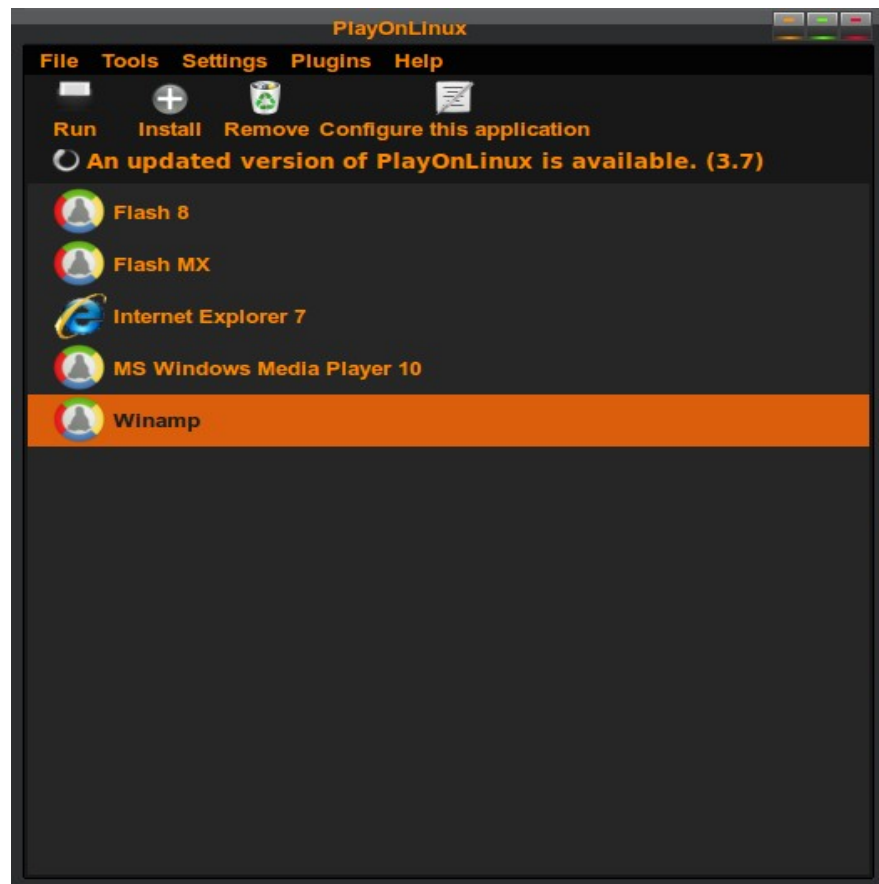


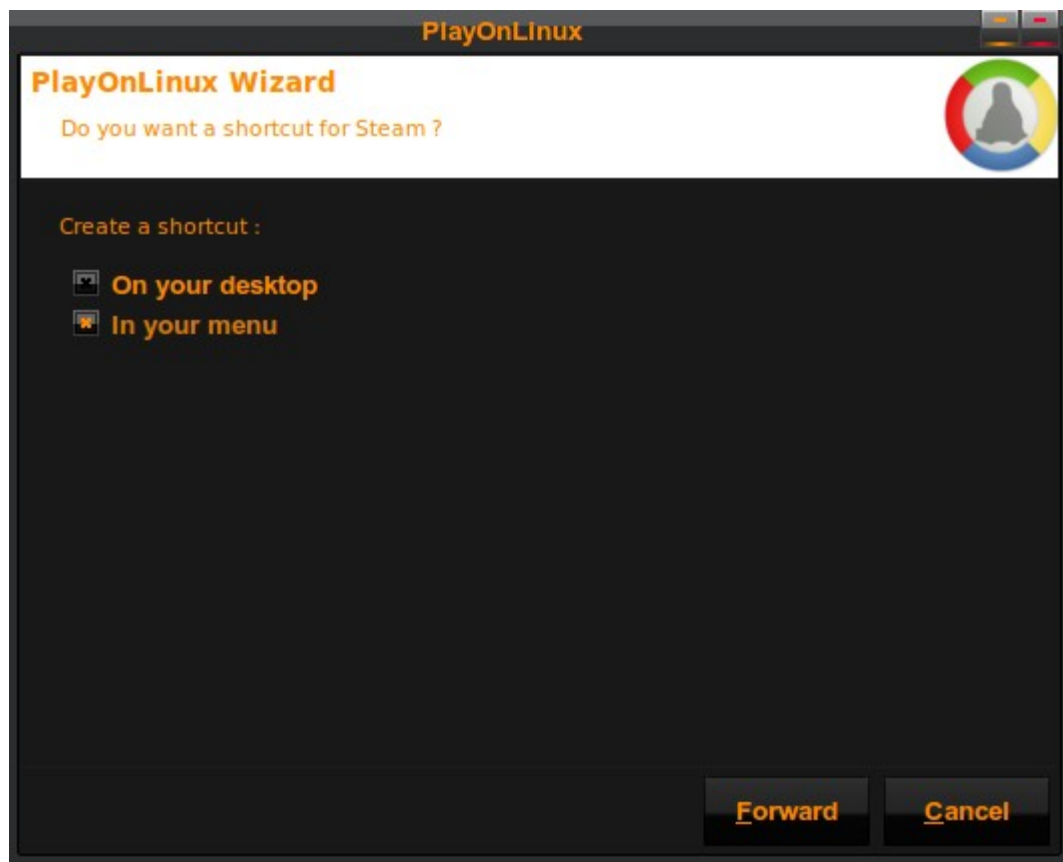
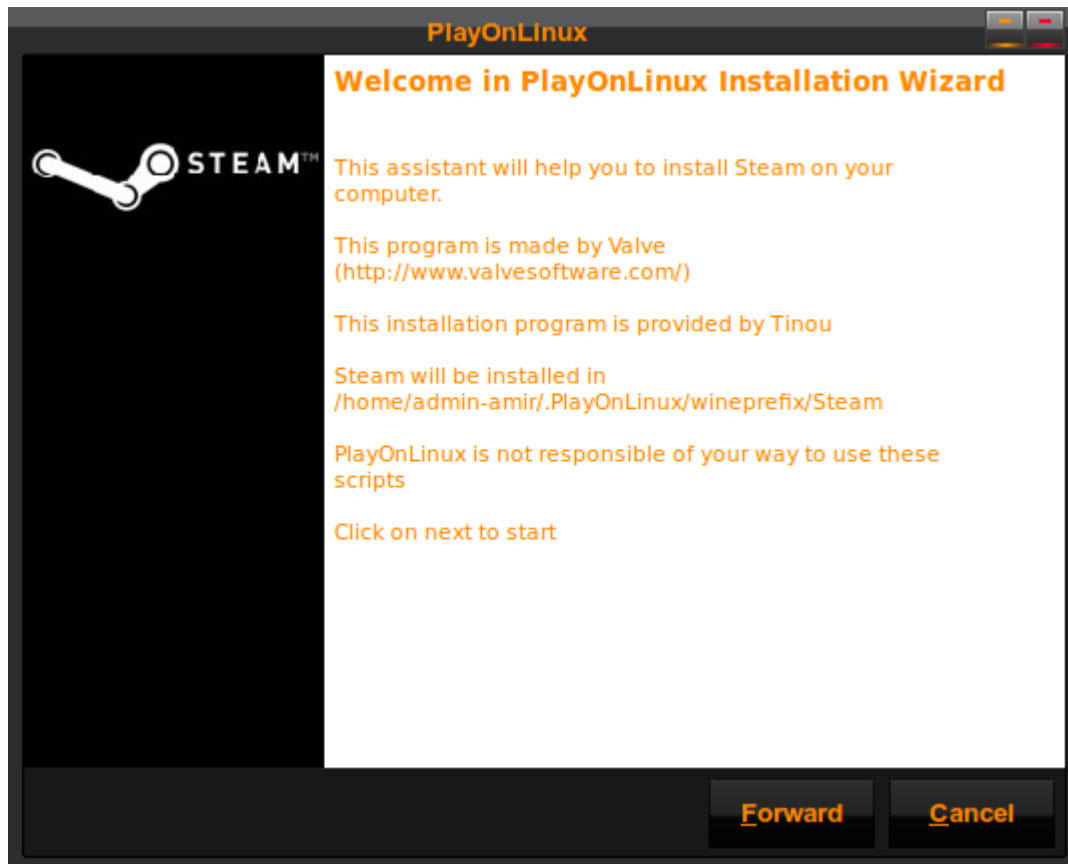


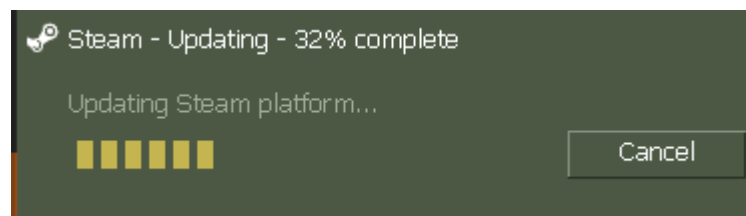
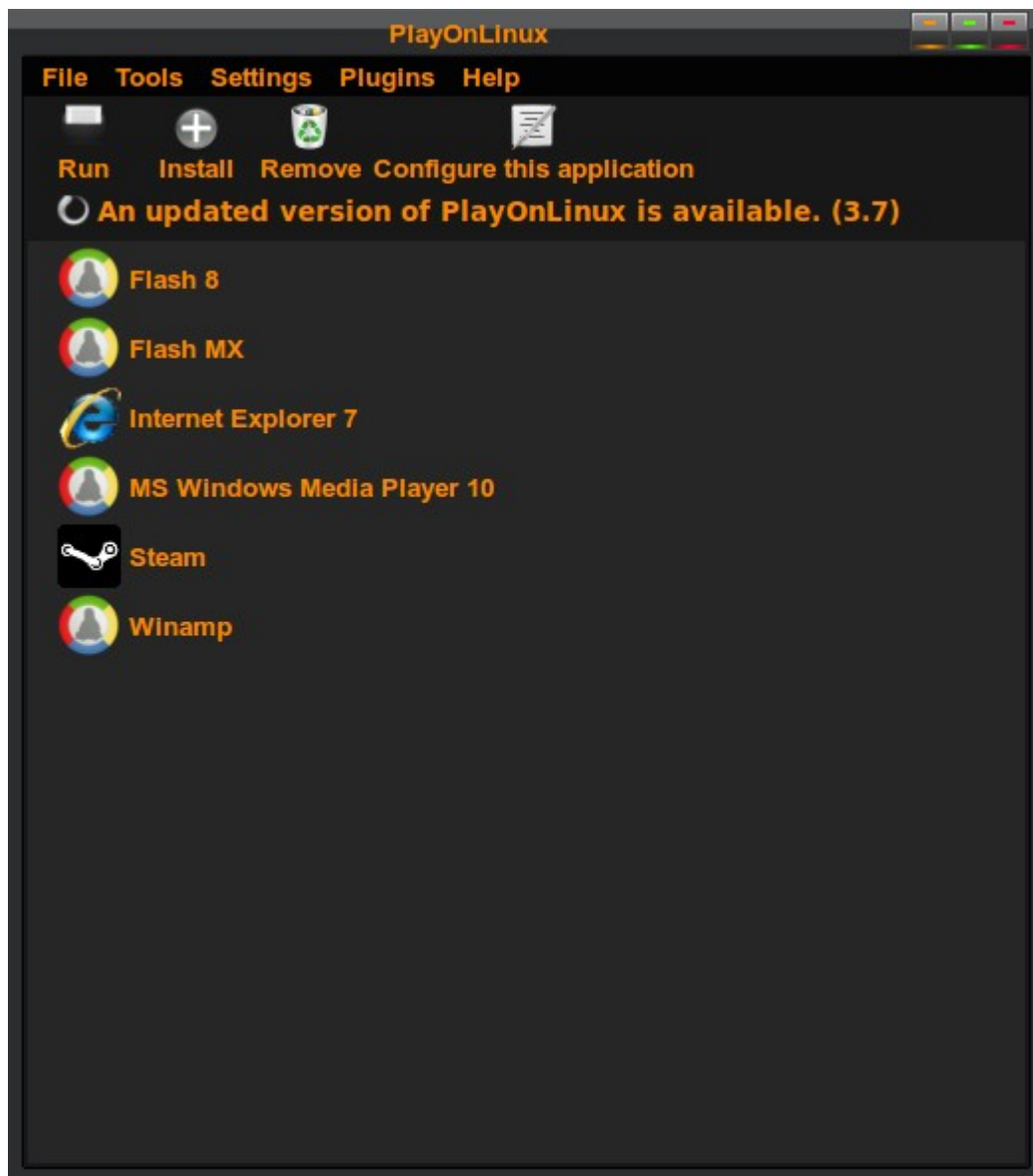


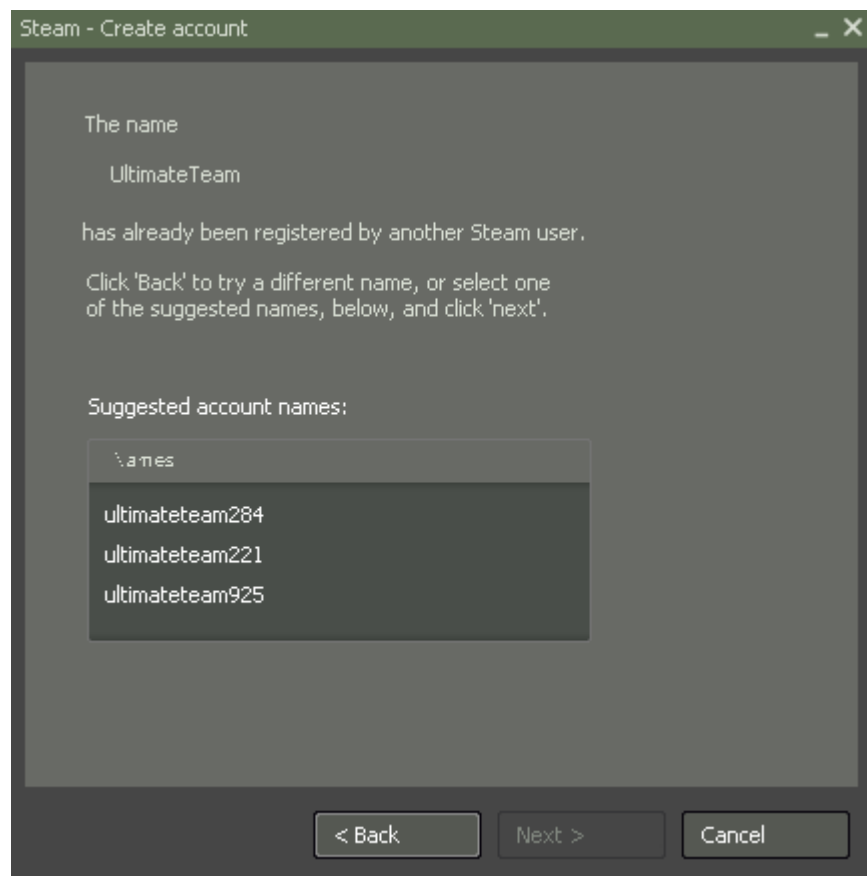


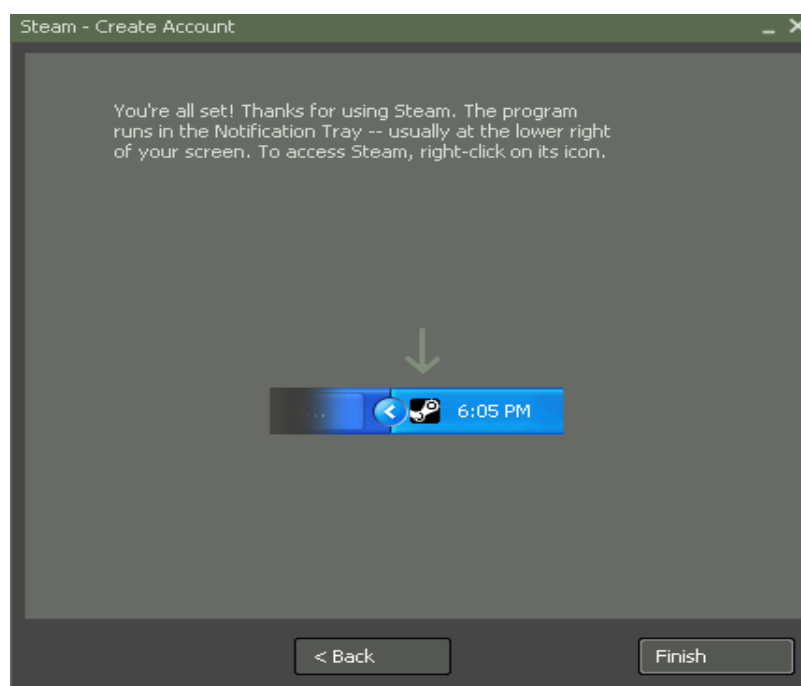
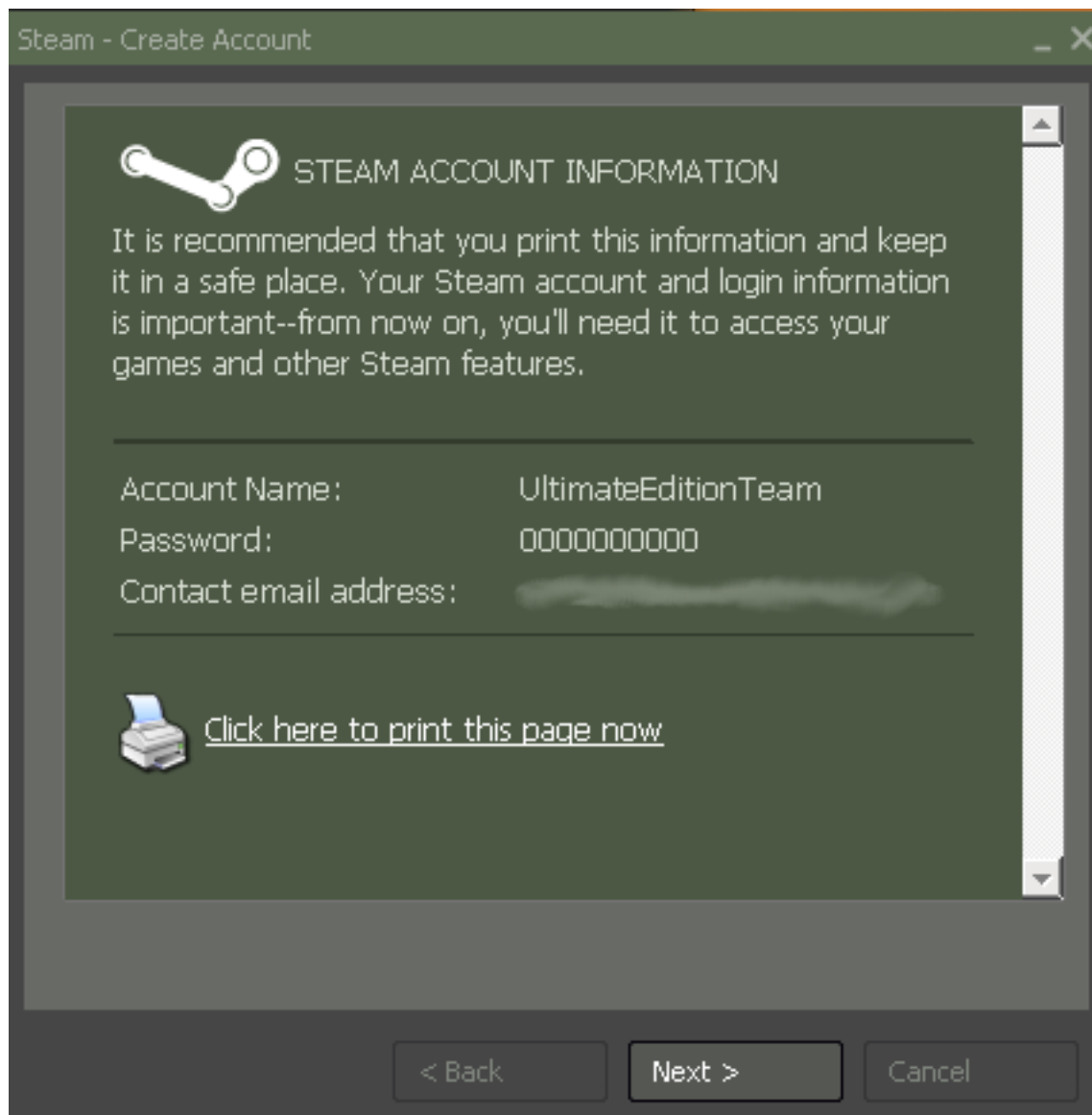


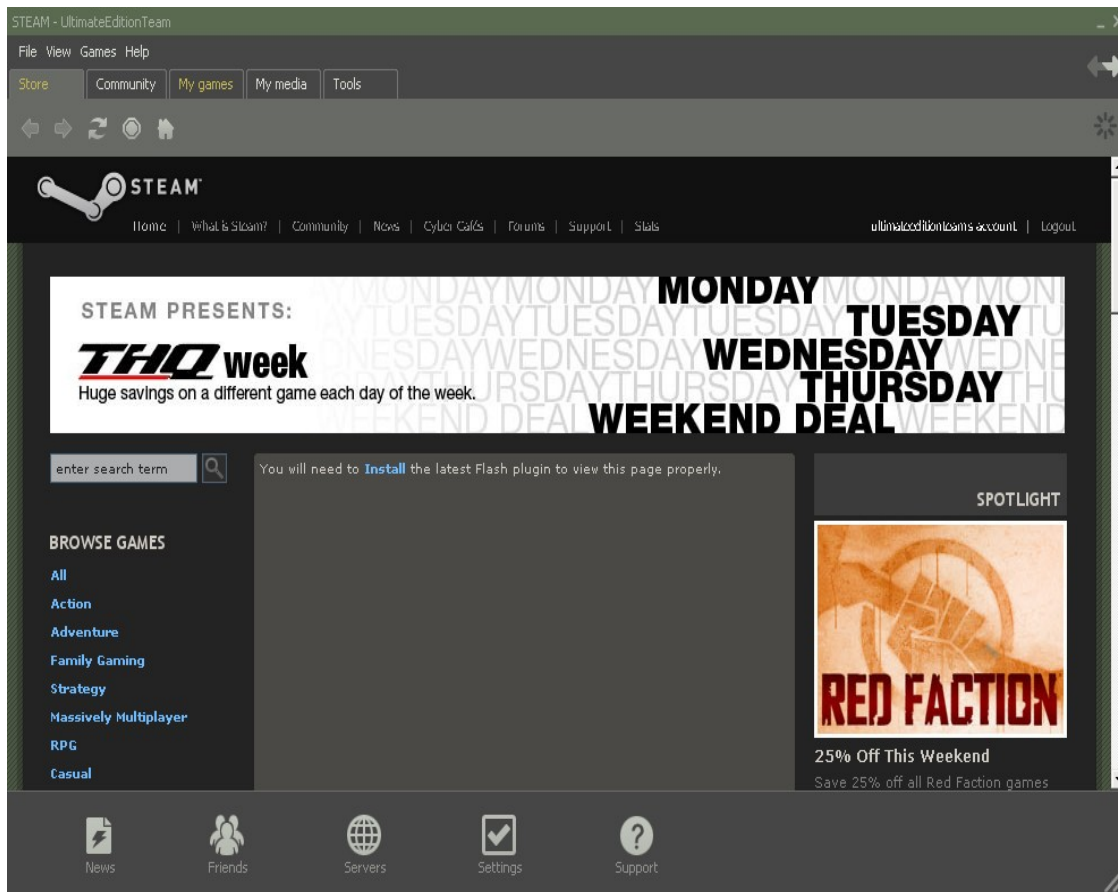












Has you can see all have to work for you.
So just go true the right way with Linux, And you will be Happy.
This Guide is for All the U.E Gamers on the site.
Have Fun out there with your Linux Software For MS Games.

This Guide Is FROM THE U.E TEAM ON THE SITE For User Help.

Please Use the Other Guide for the PlayOnLinux on the Forum.

Thank you All
Amir.